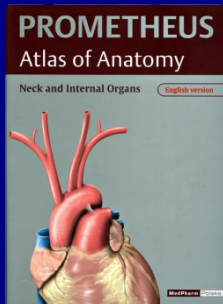
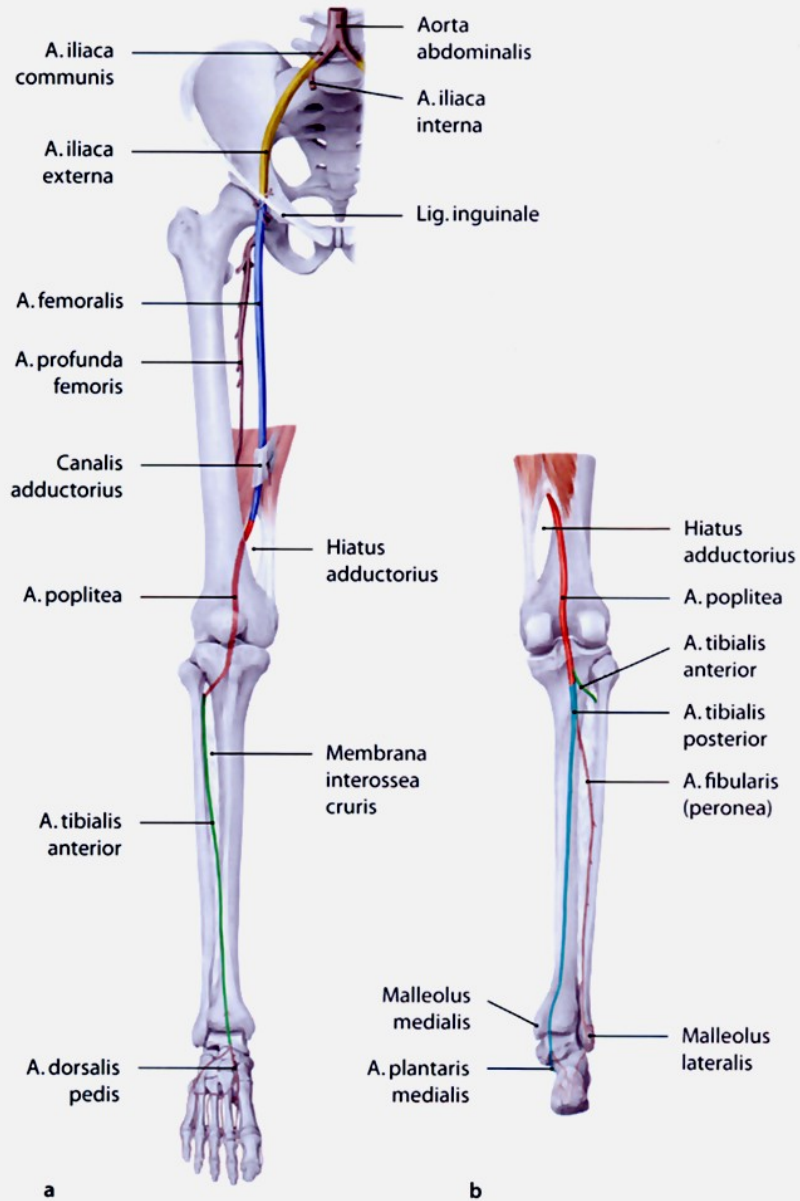
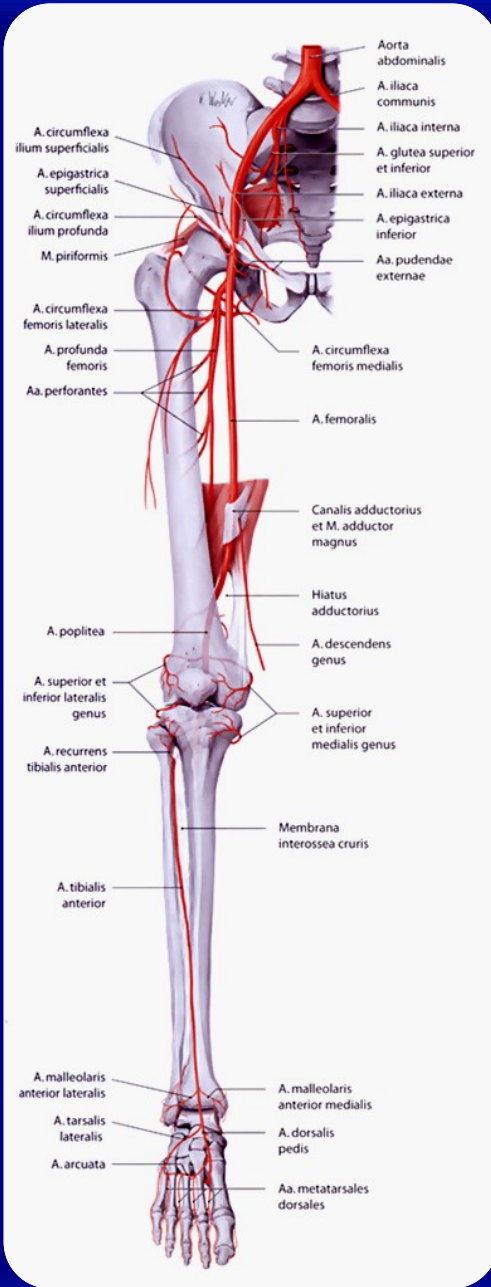
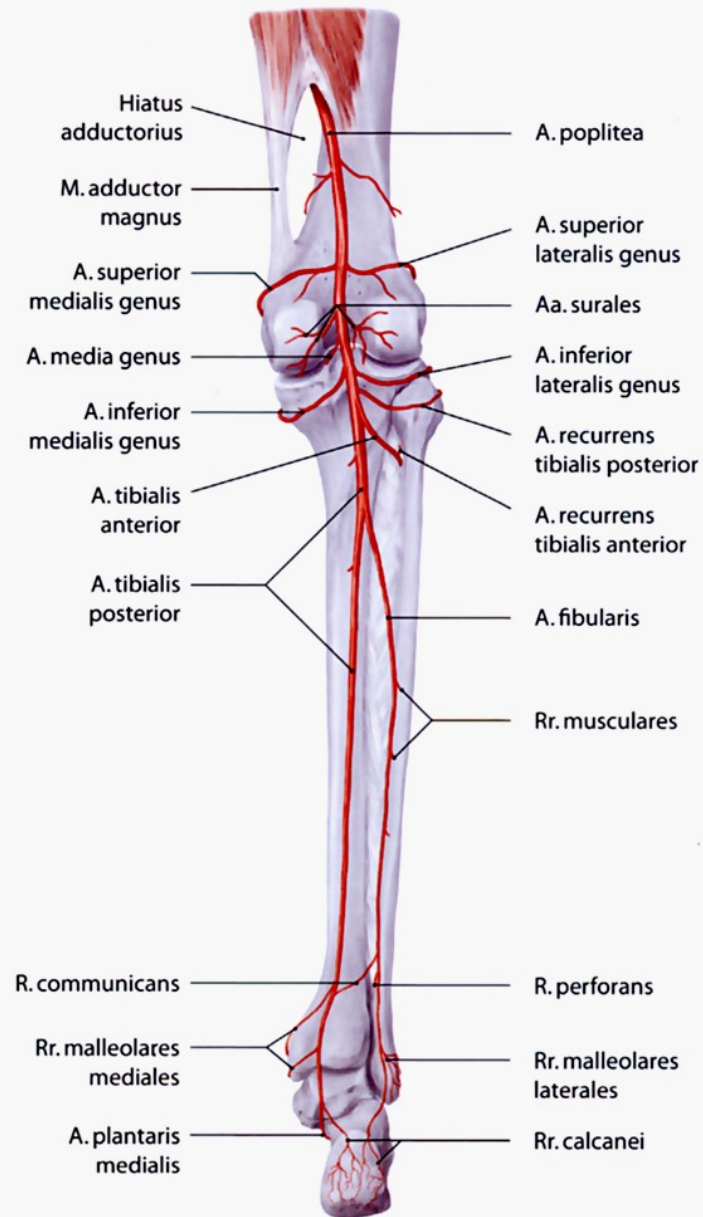


Układ naczyniowy i nerwowy kończyny dolnej

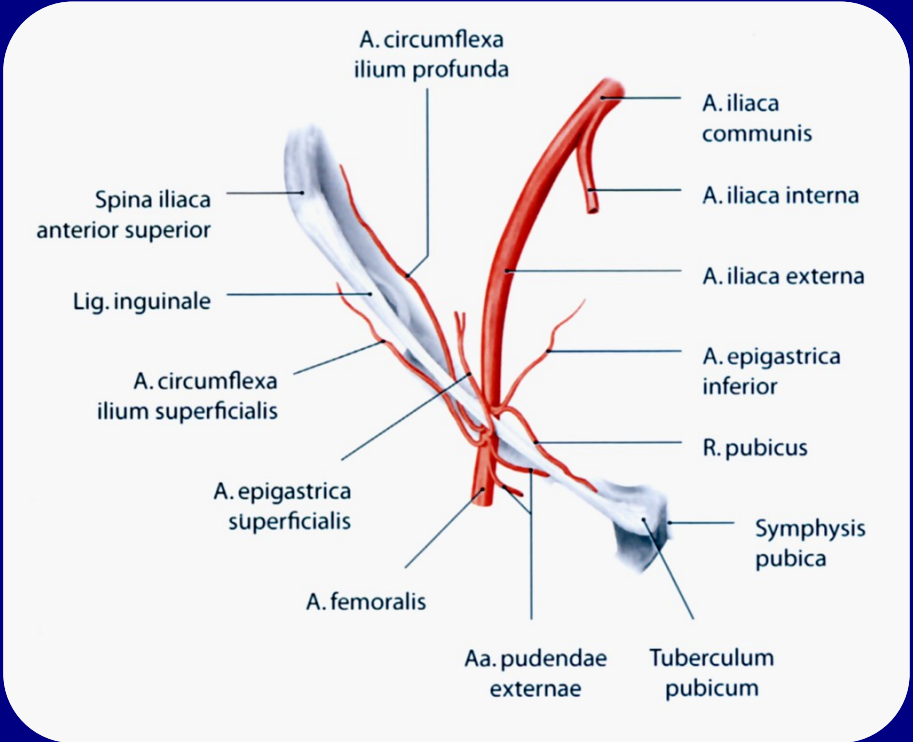
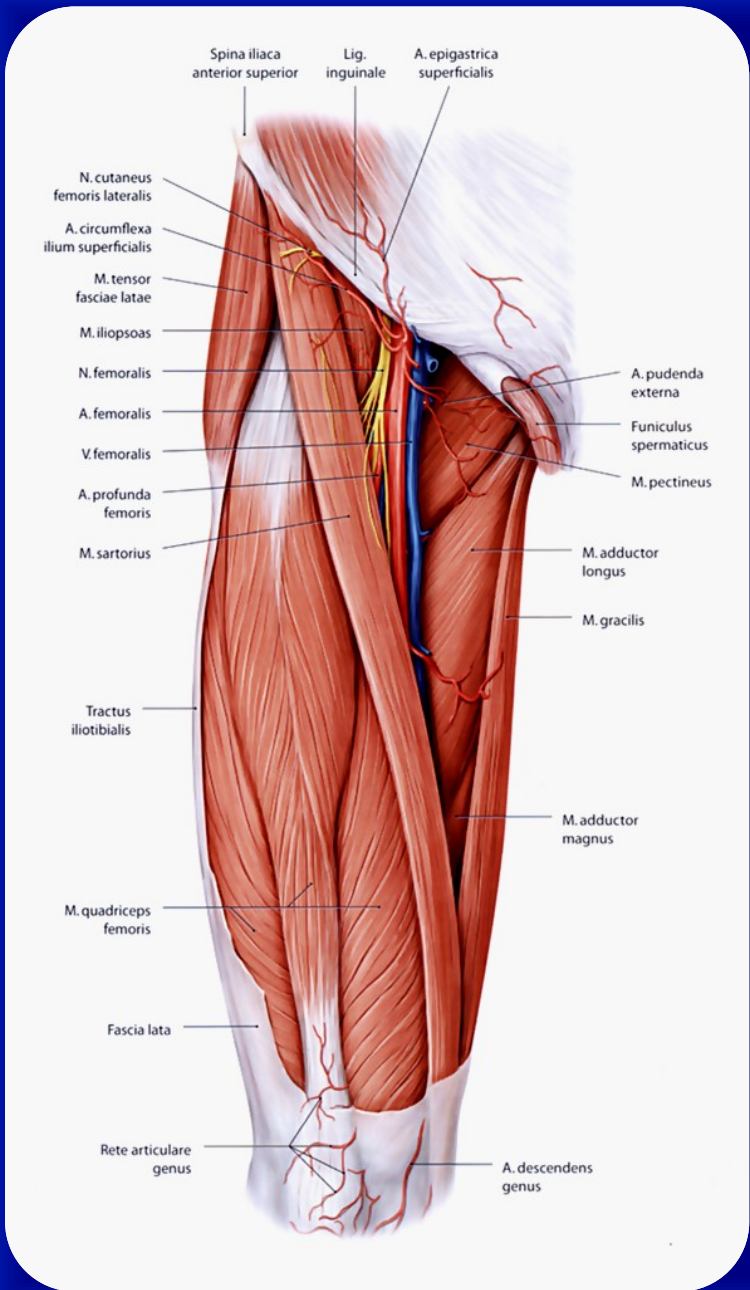


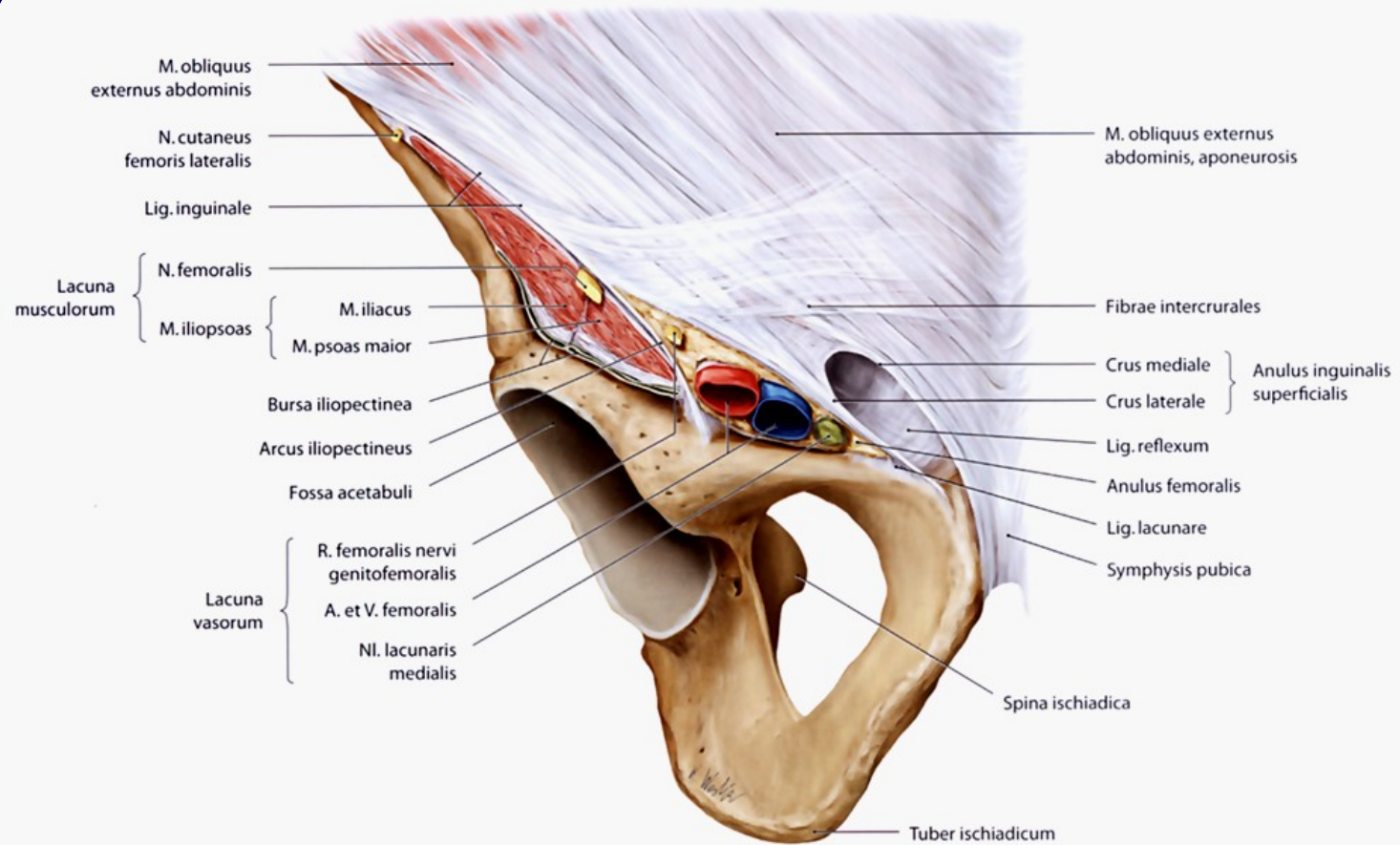


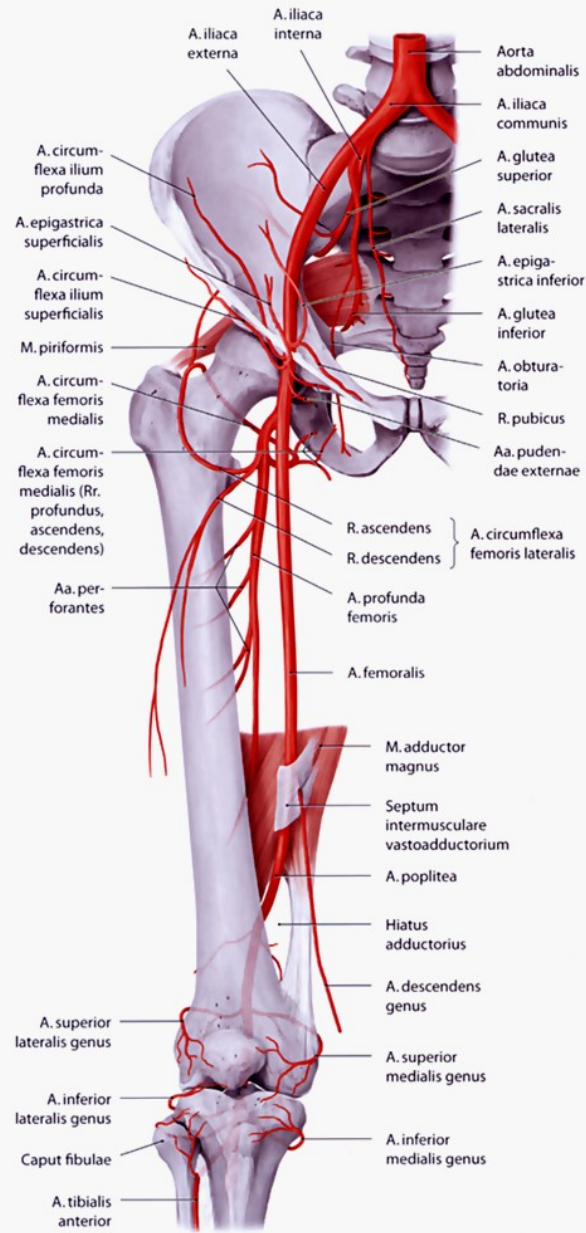


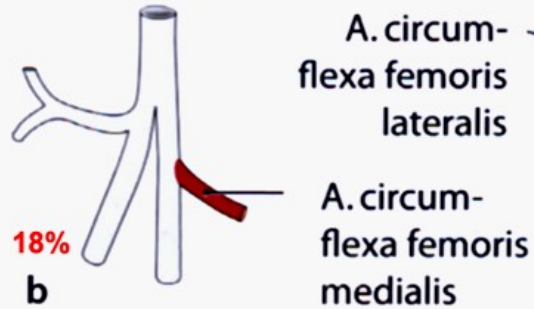
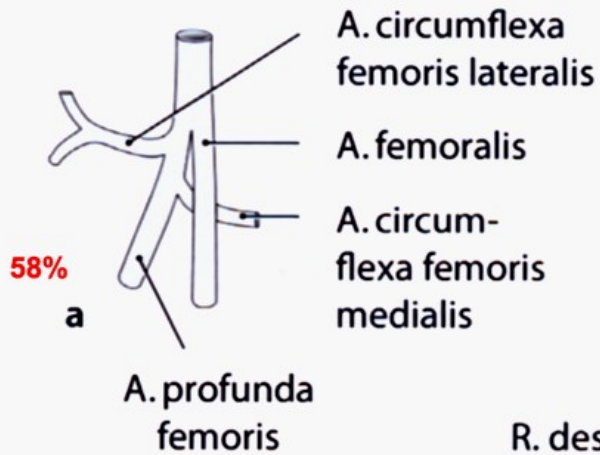




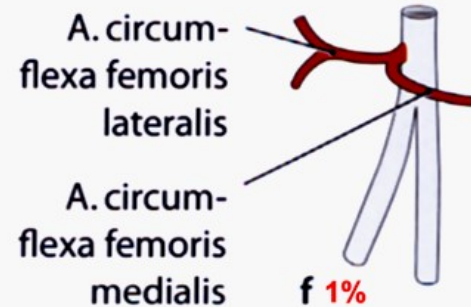
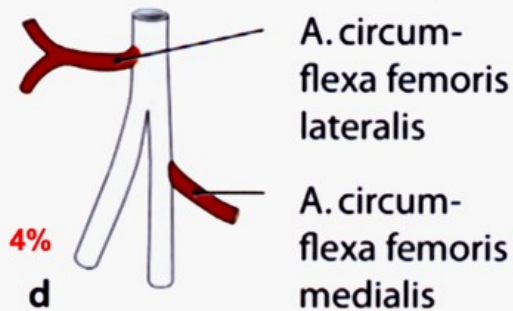


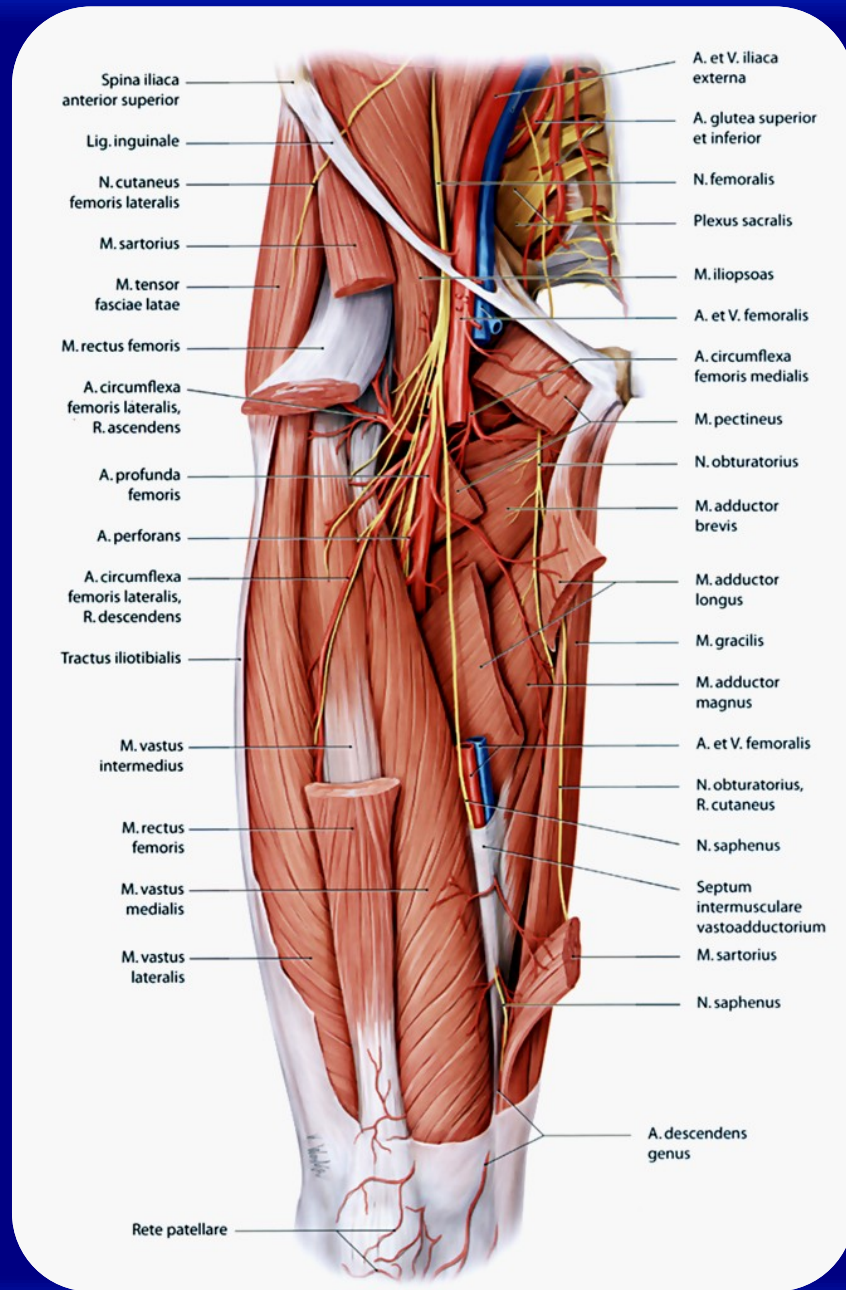


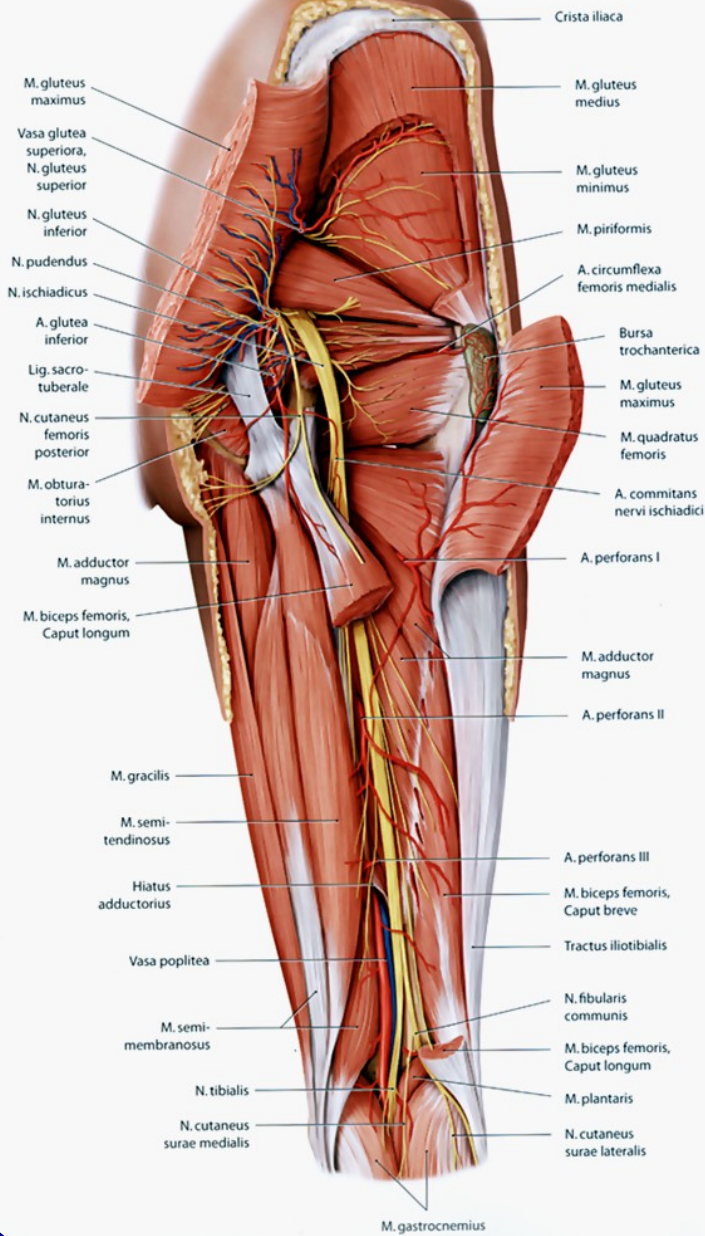




R. descendens arteriae circumflexae femoris lateralis







M. gluteus maximus

Vasa glutea superiora, N. gluteus superior

N. gluteus inferior

N. pudendus

N. ischiadicus

A. glutea inferior

Lig. sacrotuberale

N. cutaneus femoris posterior

M. obturatorius internus

M. adductor magnus

M. biceps femoris, Caput longum

M. gracilis

M. semi-tendinosus

Hiatus adductorius

Vasa poplitea

M. semi-membranosus

N. tibialis

N. cutaneus surae medialis

Crista iliaca

M. gluteus medius

M. gluteus minimus

M. piriformis

A. circumflexa femoris medialis

Bursa trochanterica

M. gluteus maximus

M. quadratus femoris

A. commitans nervi ischiadici

A. perforans I

M. adductor magnus

A. perforans II

A. perforans III

M. biceps femoris, Caput breve

Tractus iliotibialis

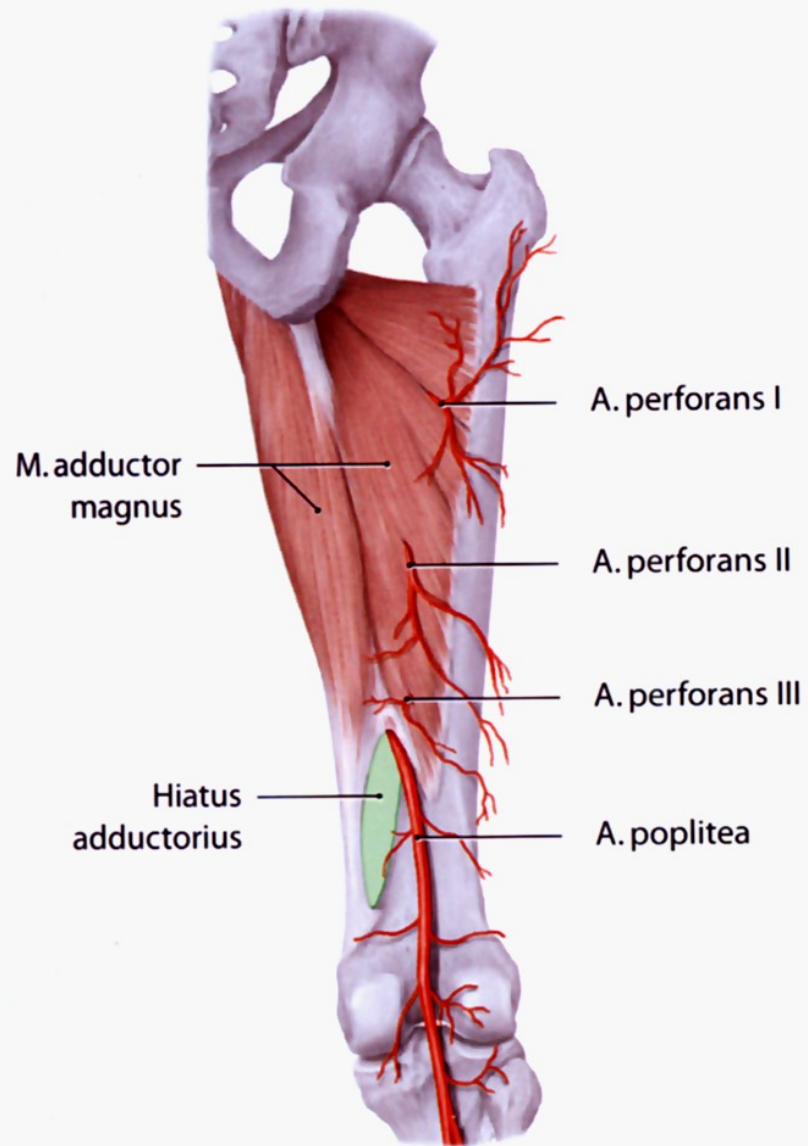
N. fibularis communis

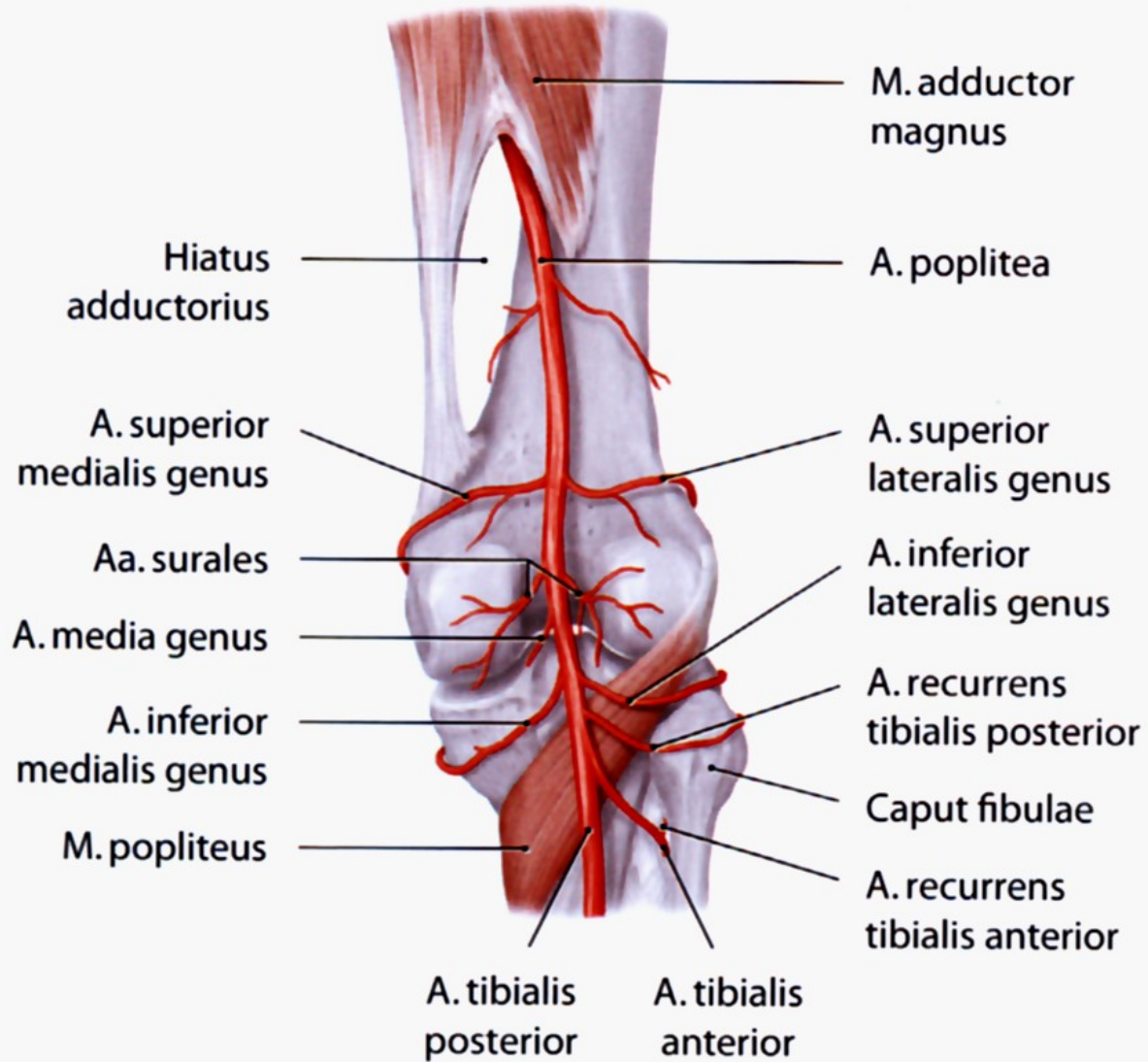
M. biceps femoris, Caput longum

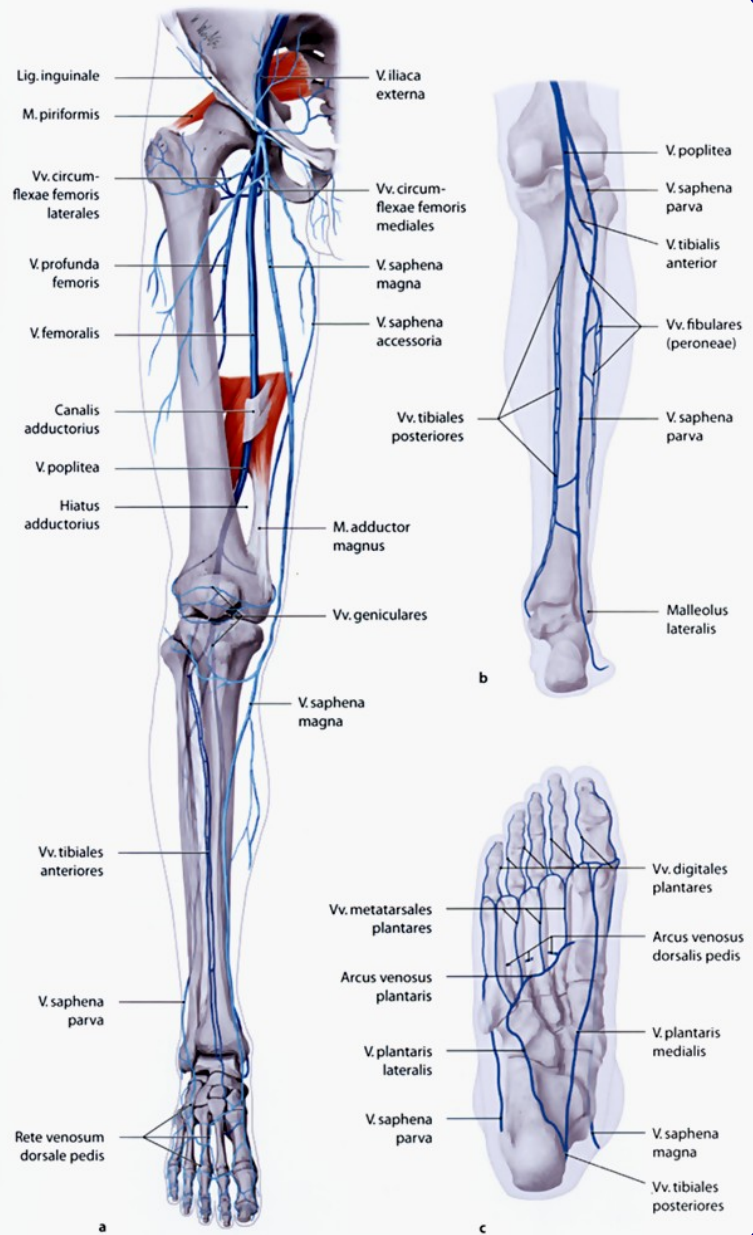
M. plantaris

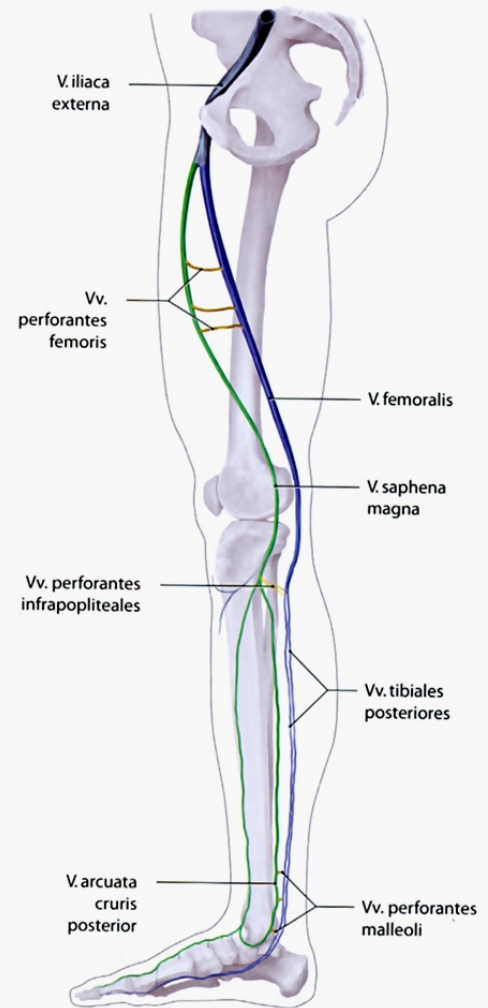
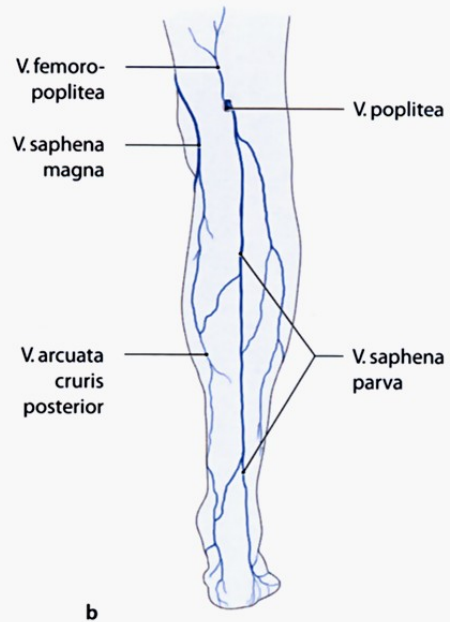
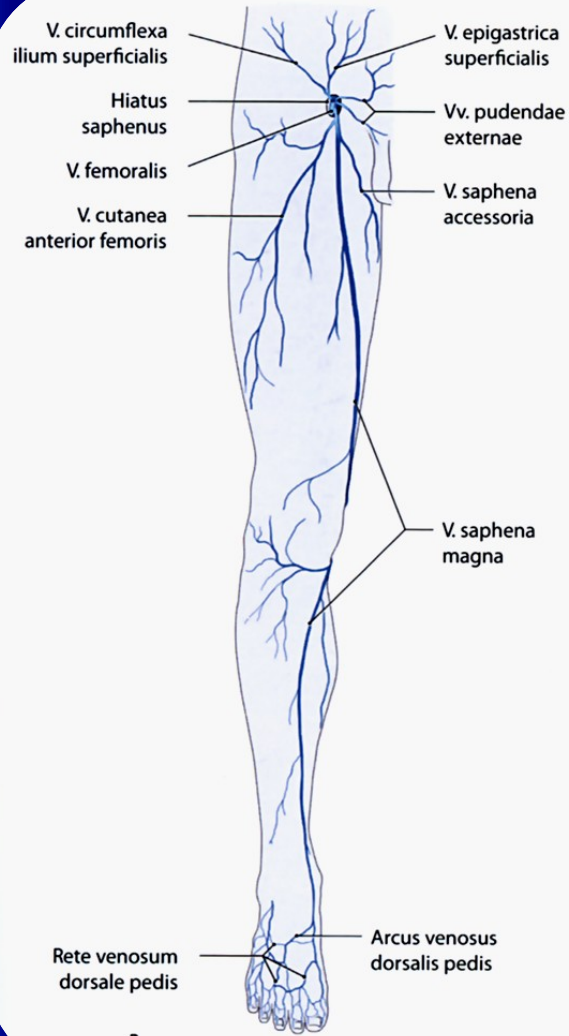
N. cutaneus surae lateralis

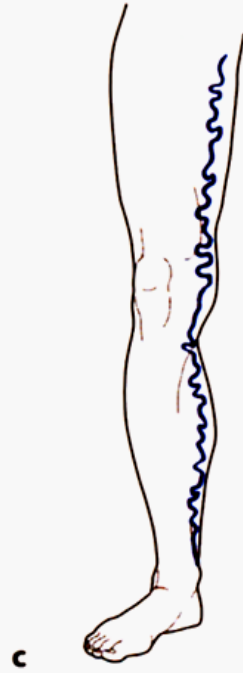
M. gastrocnemius

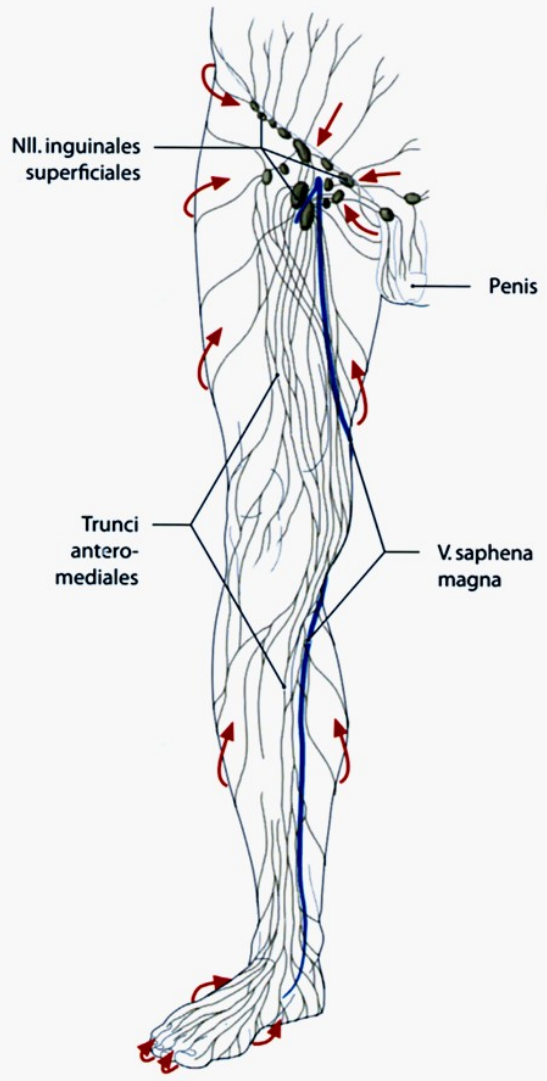




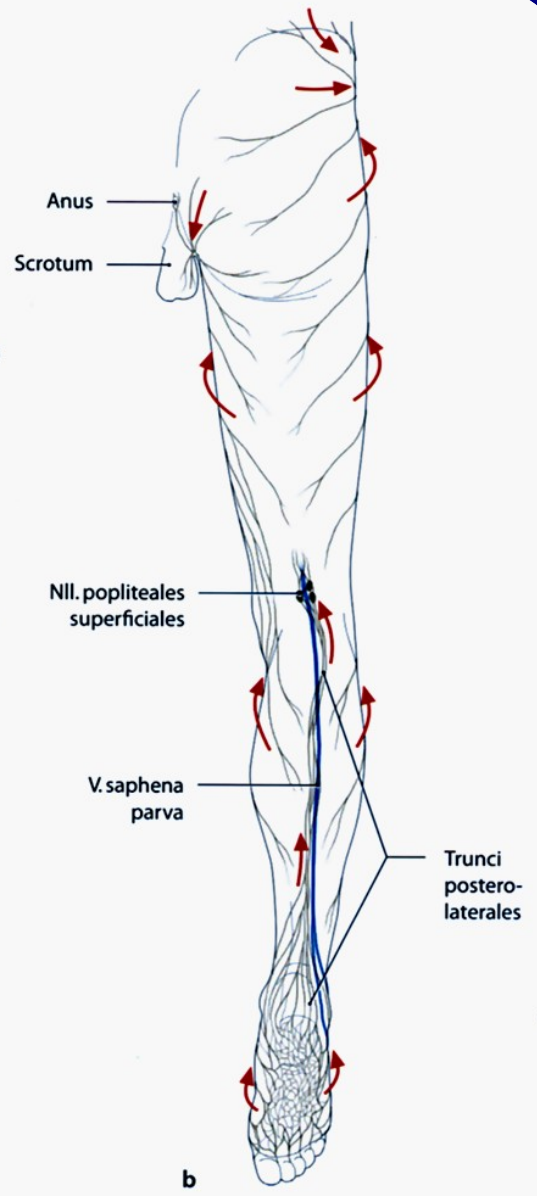




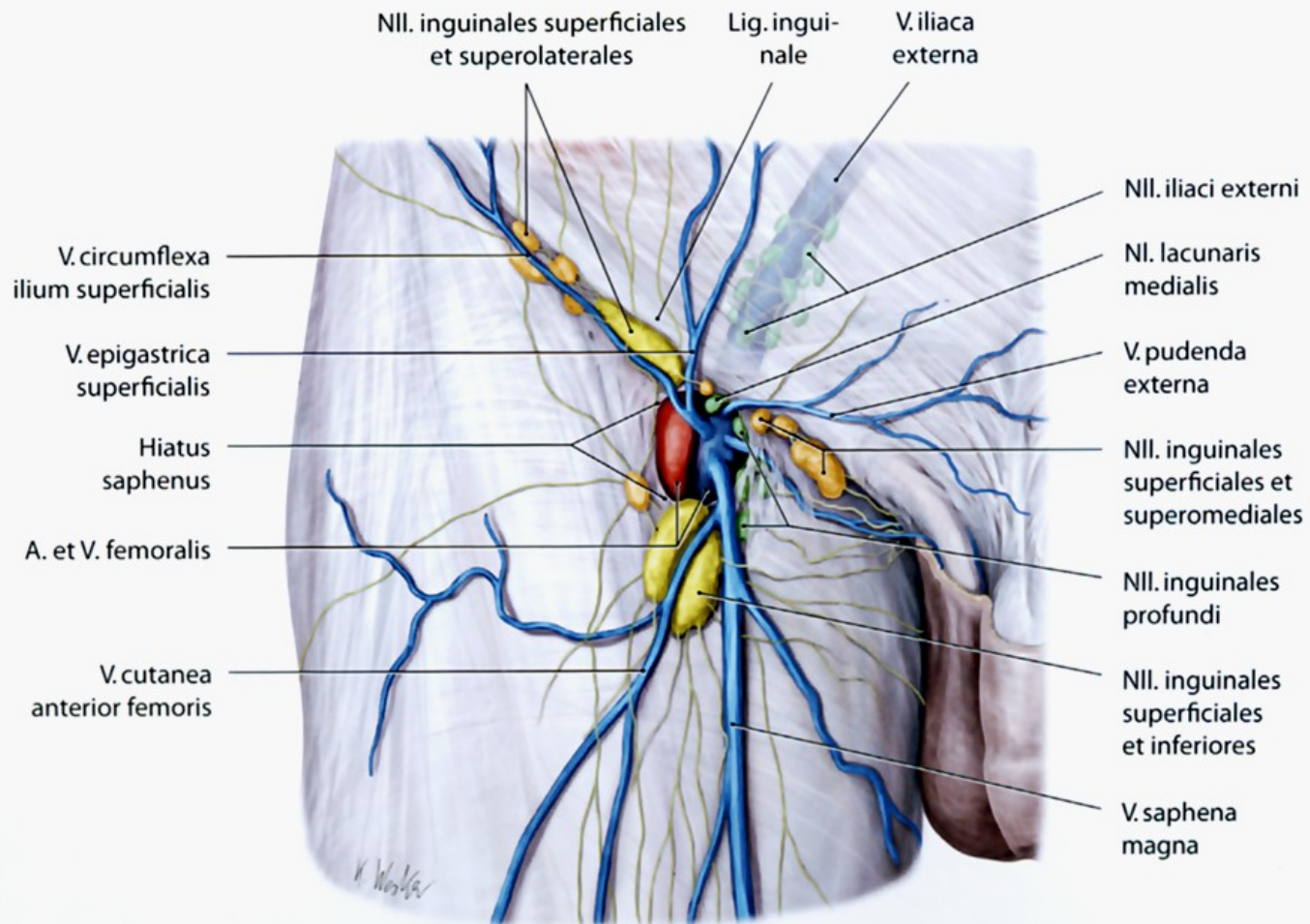


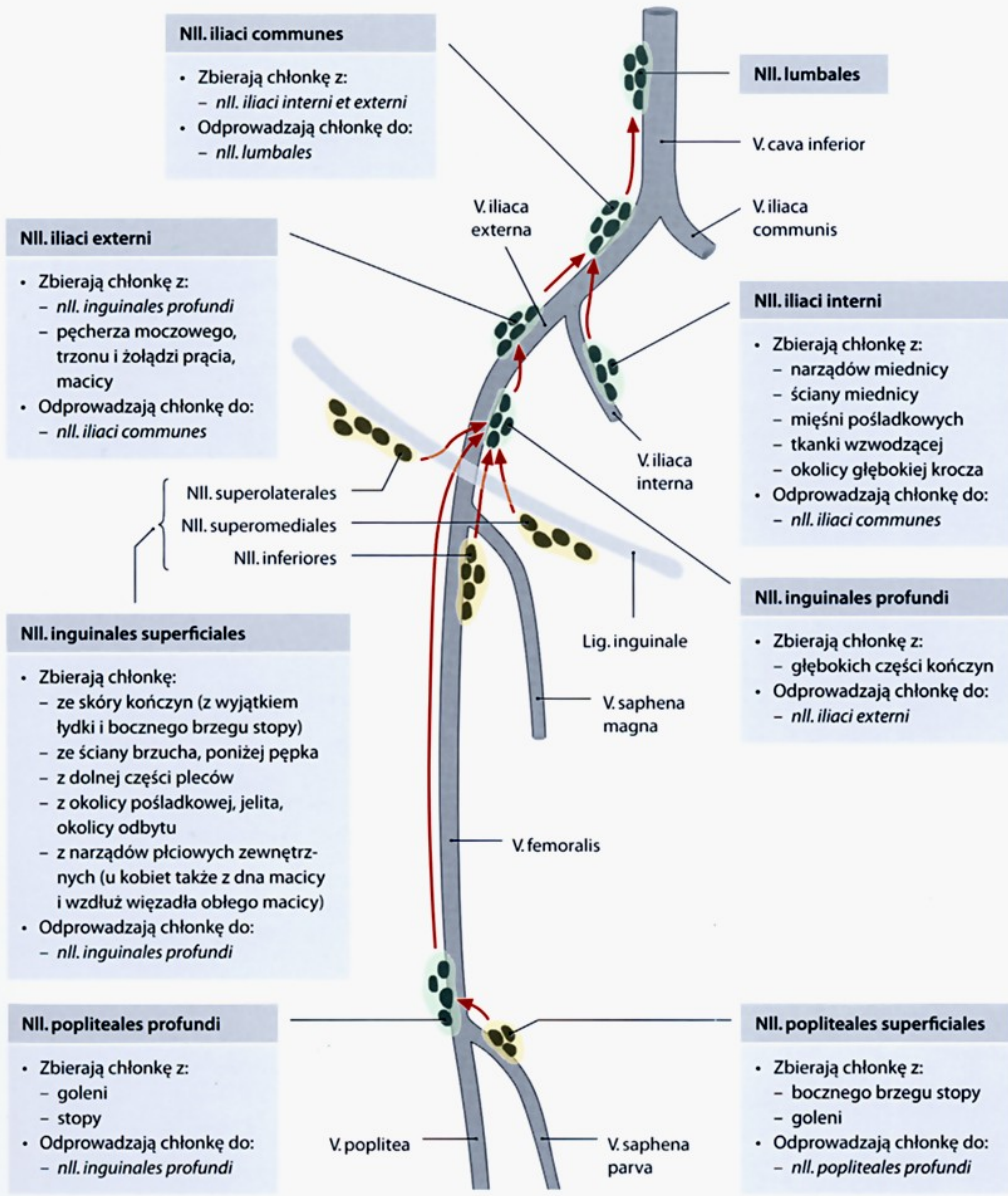


a



b





M. semi-
membranosus

A. et V. poplitea

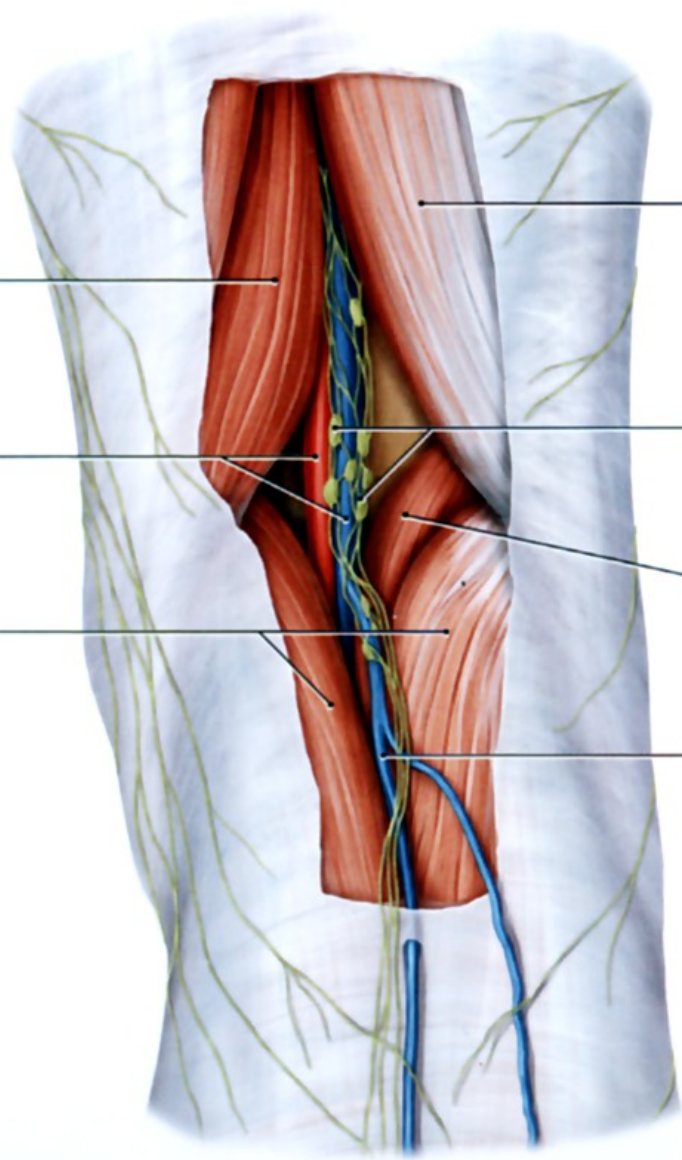
M. gastro-
cnemius

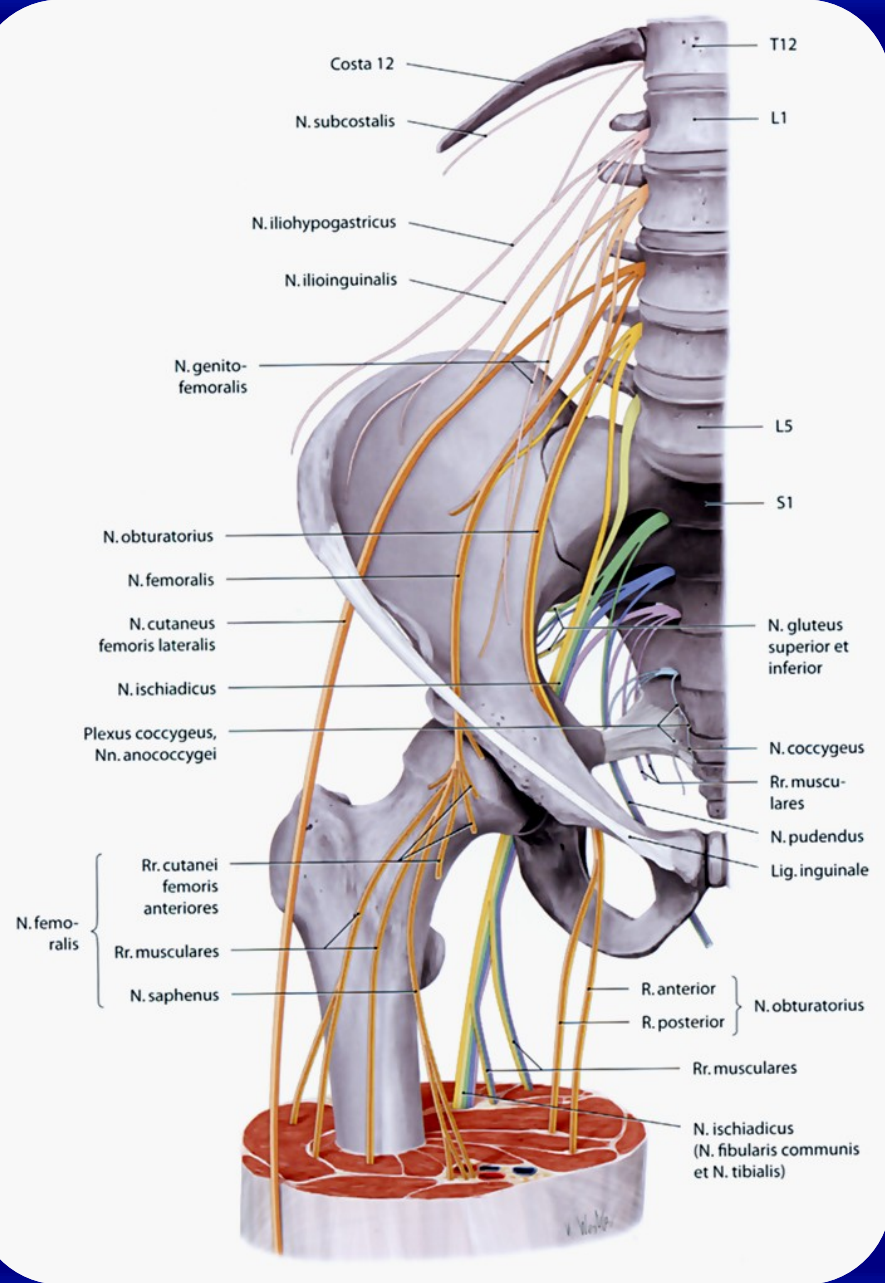
M. biceps
femoris

Nll. popliteales
profundi

M. plantaris

V. saphena
parva





Costa 12

T12

N. subcostalis

L1

N. iliohypogastricus

N. ilioinguinalis

N. genito-femoralis

L5

S1

N. obturatorius

N. femoralis

N. cutaneus femoris lateralis

N. ischiadicus

Plexus coccygeus, Nn. anococcygei

N. gluteus superior et inferior

N. coccygeus

Rr. musculares

N. pudendus

Lig. inguinale

N. femoralis

Rr. cutanei femoris anteriores

Rr. musculares

N. saphenus

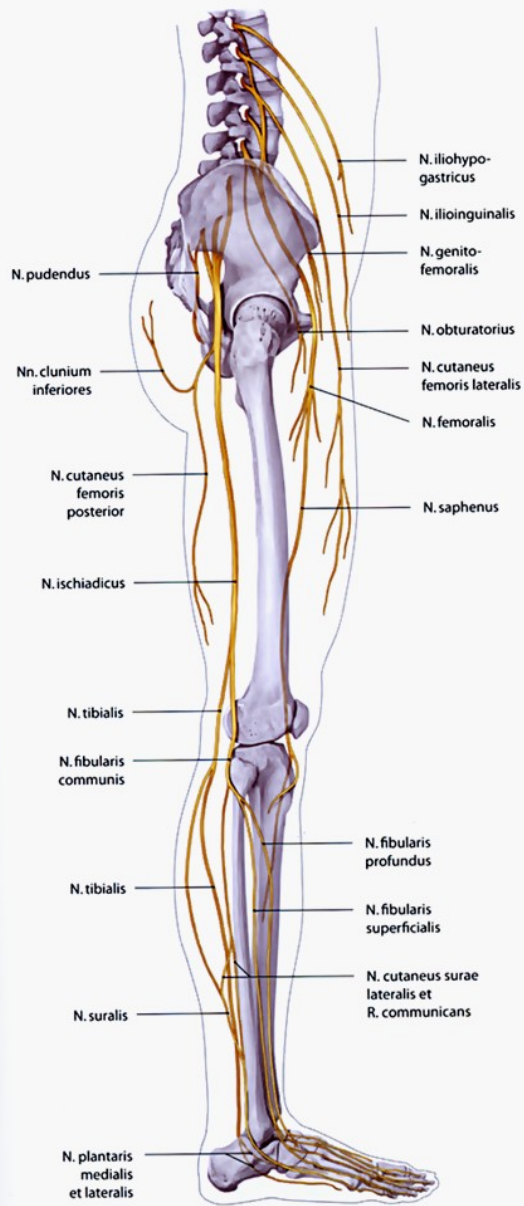
R. anterior

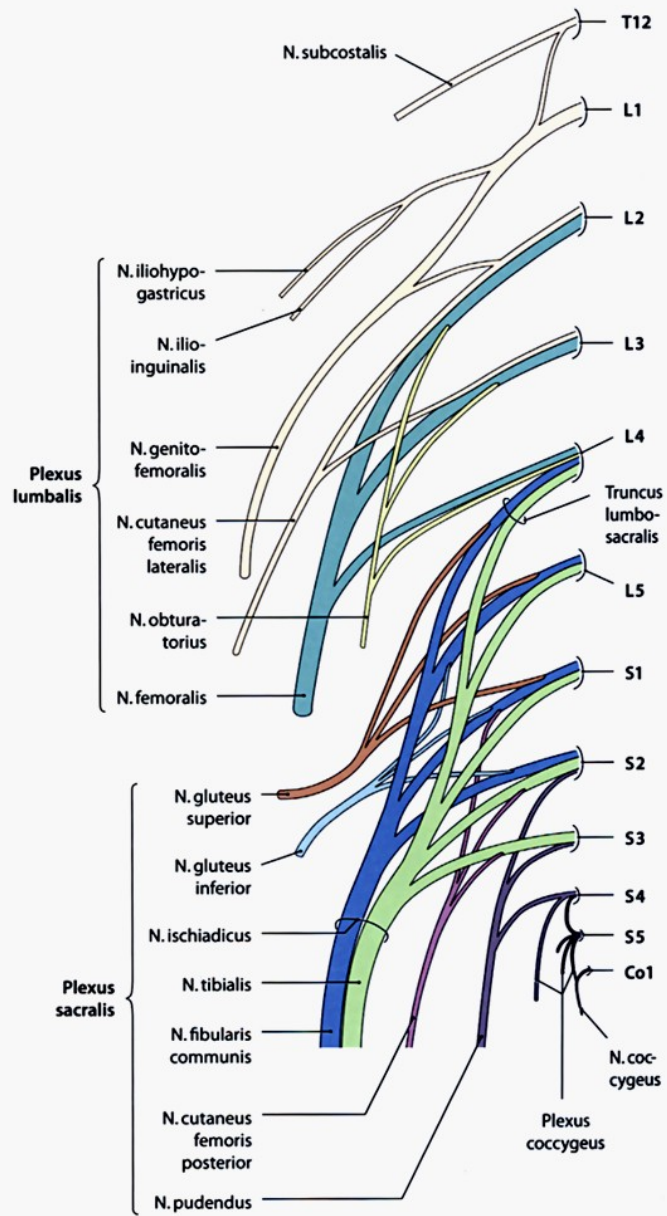
R. posterior

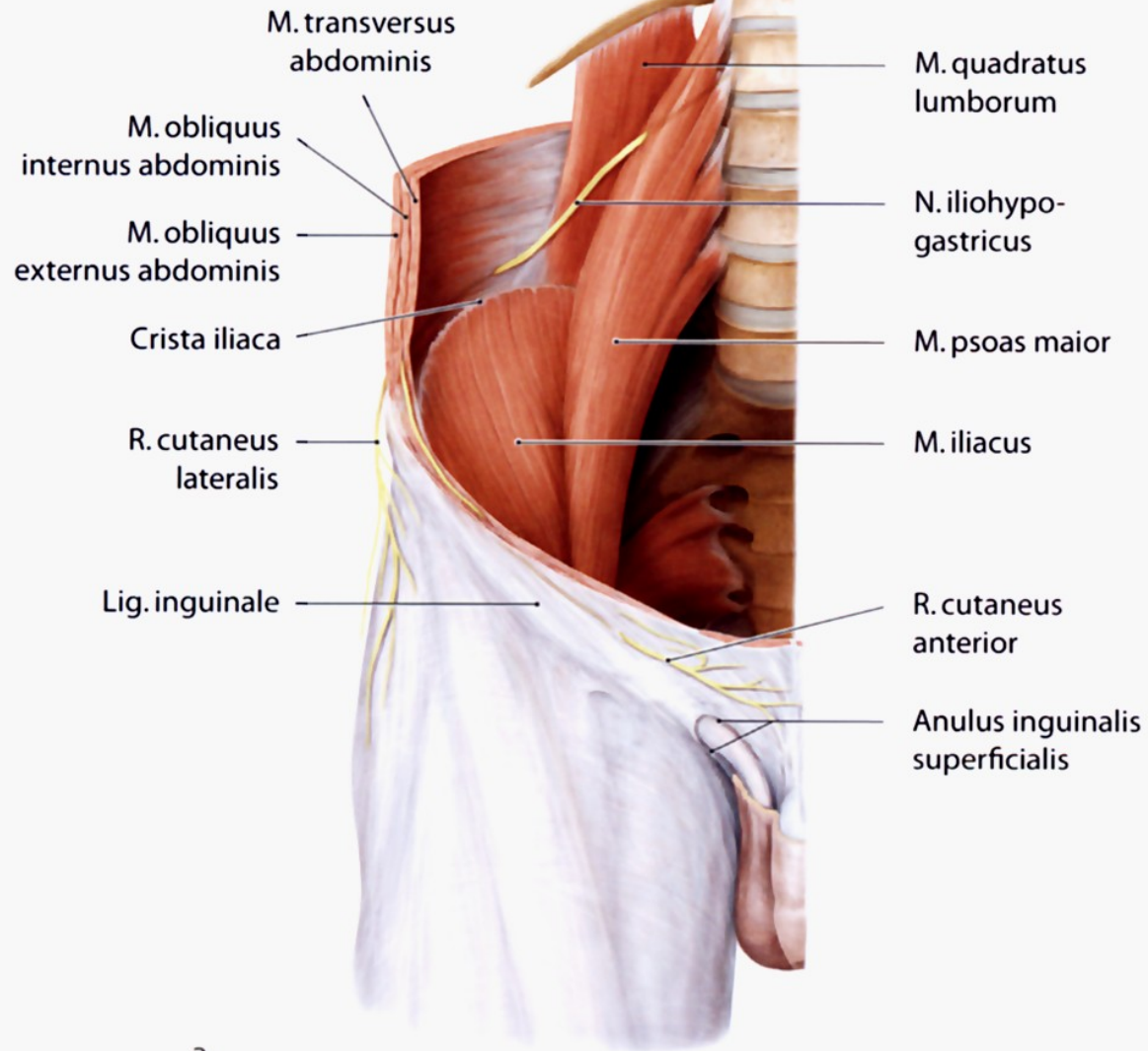
N. obturatorius

Rr. musculares

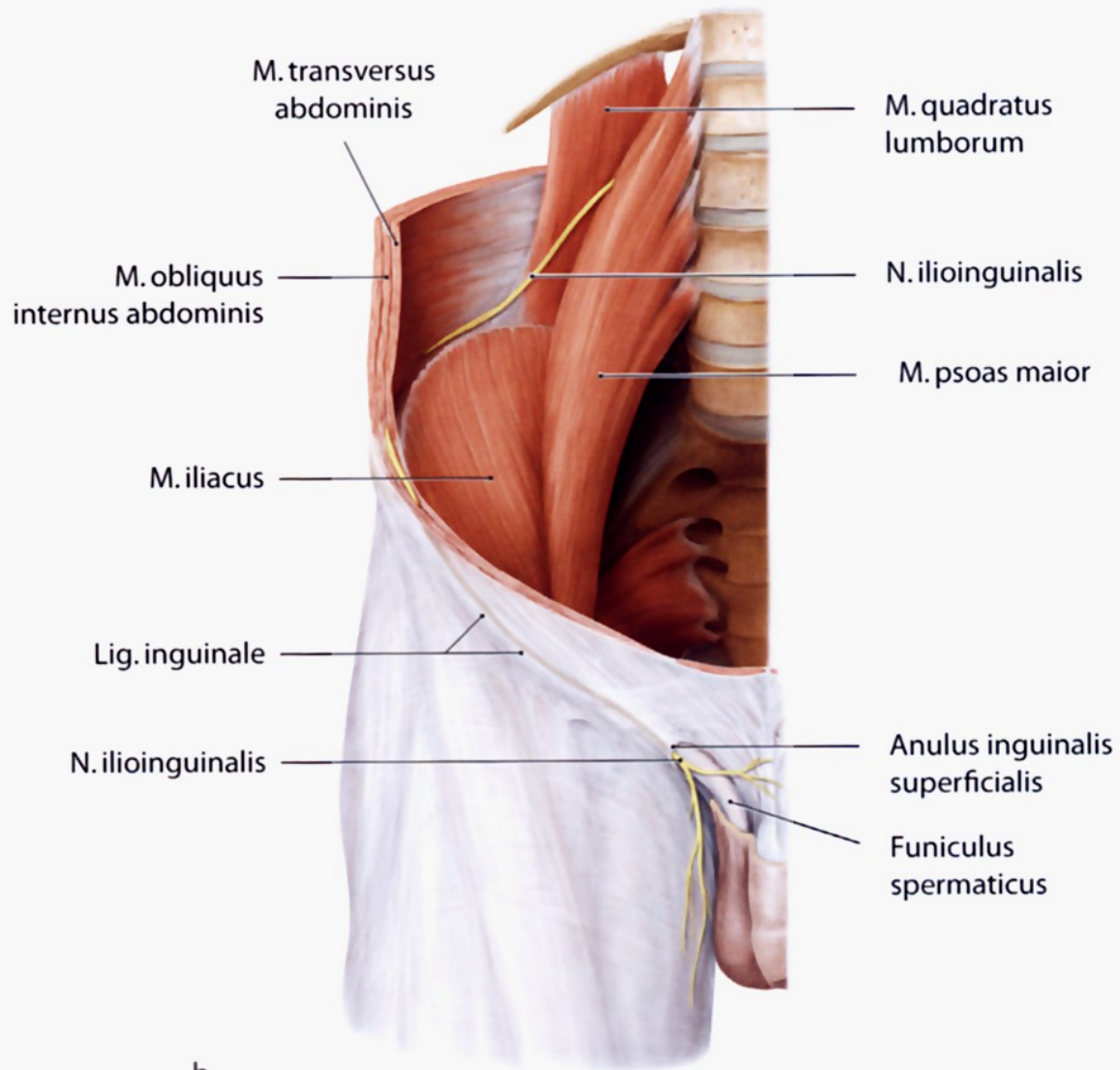
N. ischiadicus (N. fibularis communis et N. tibialis)



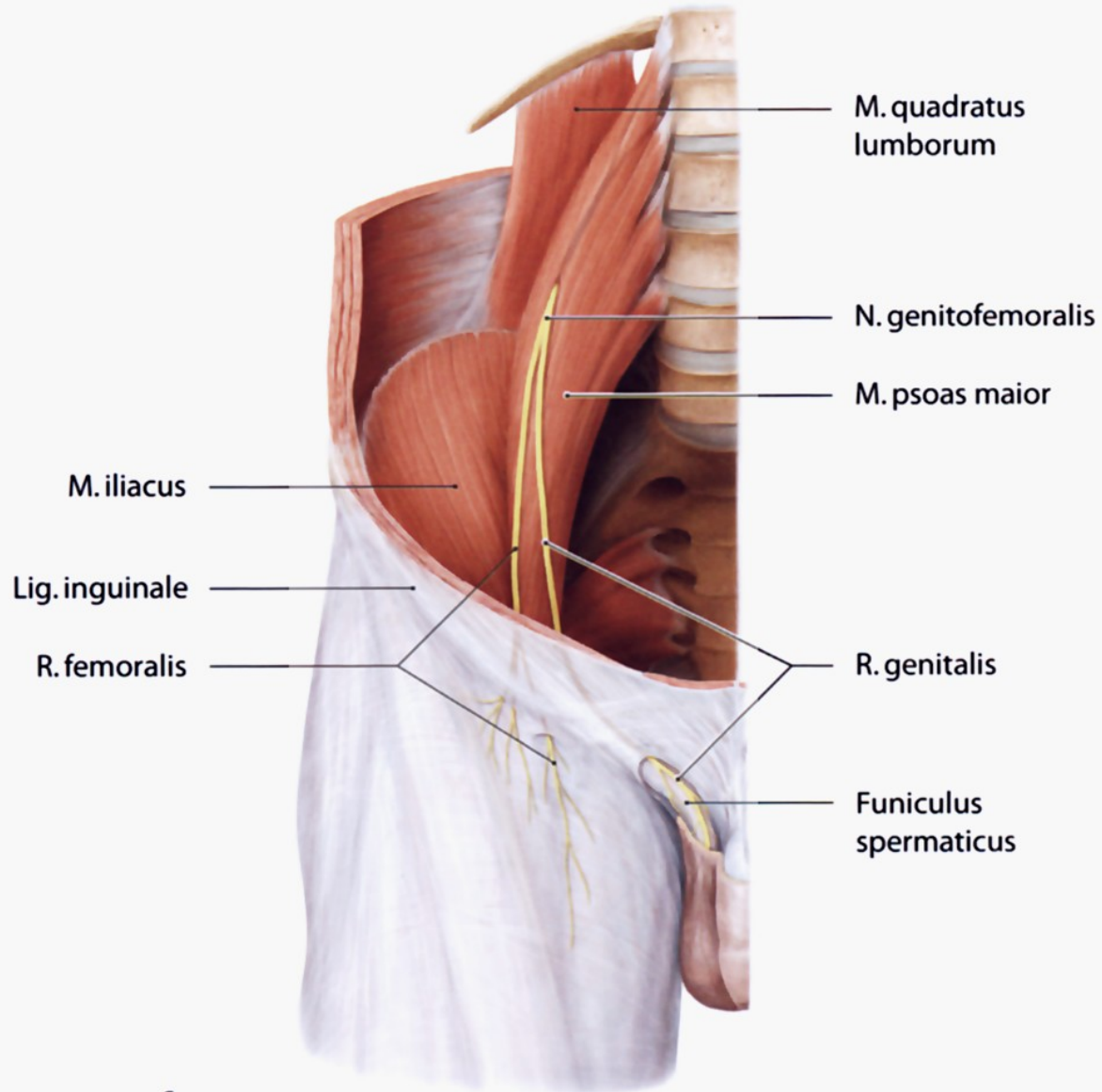


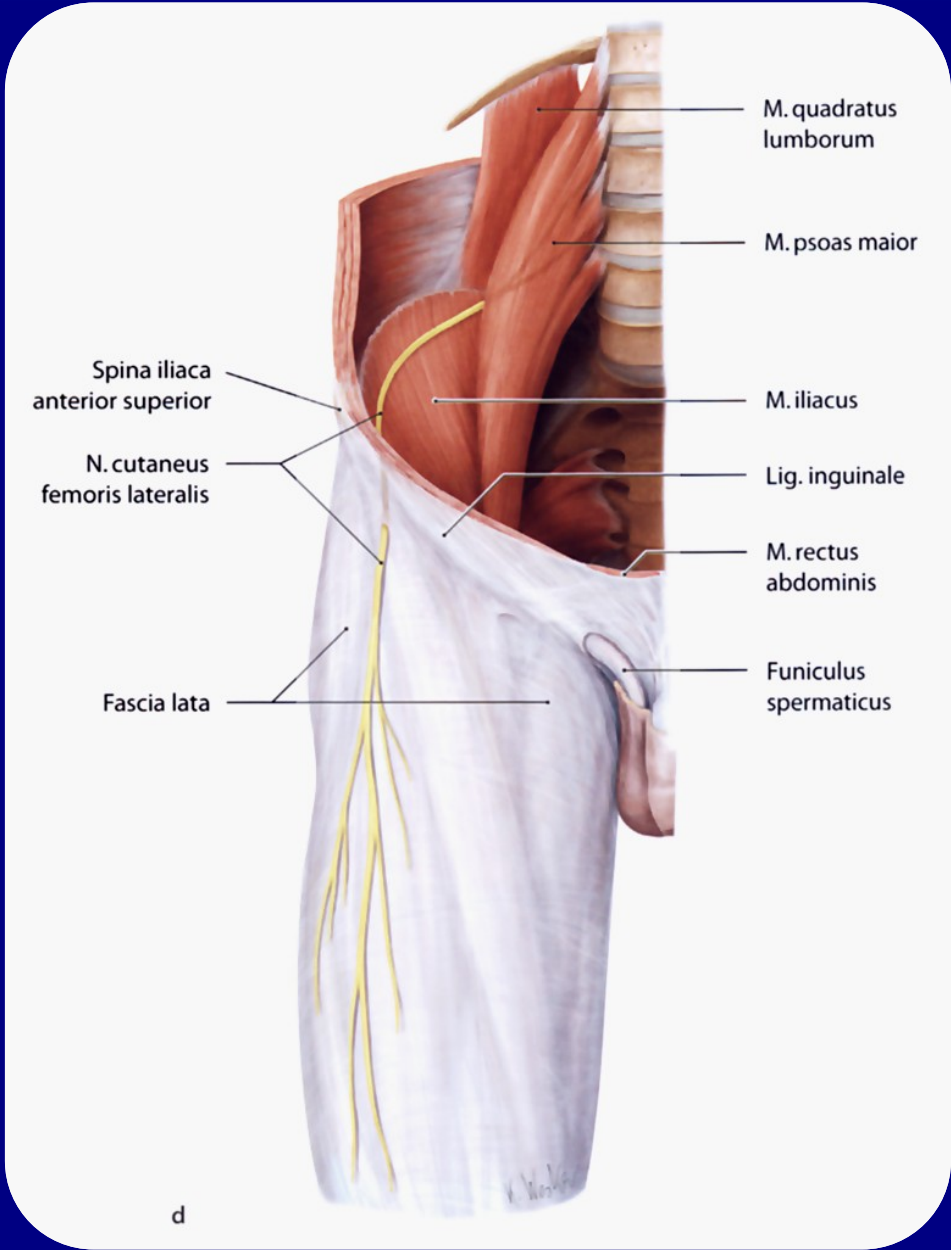


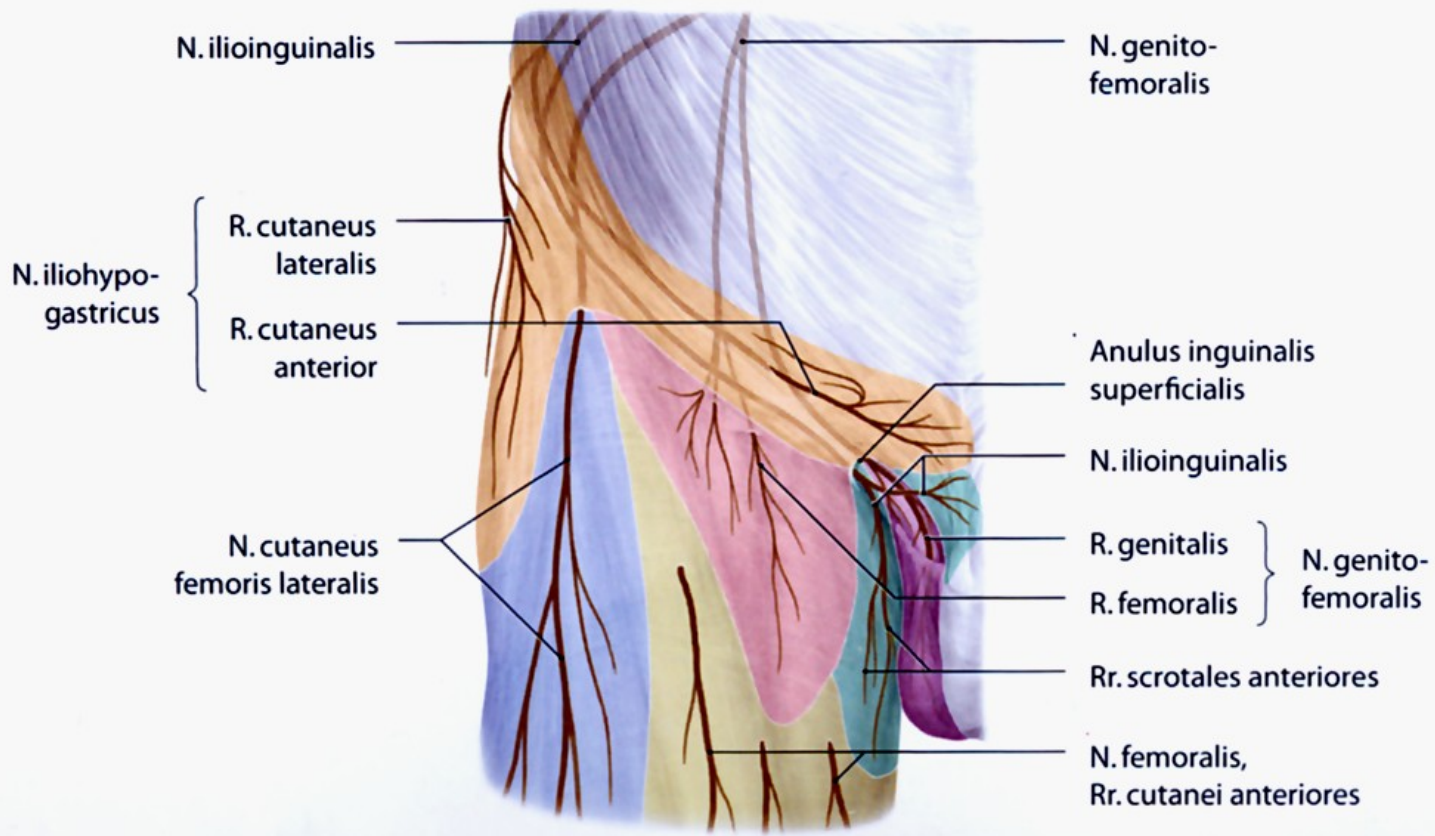
a

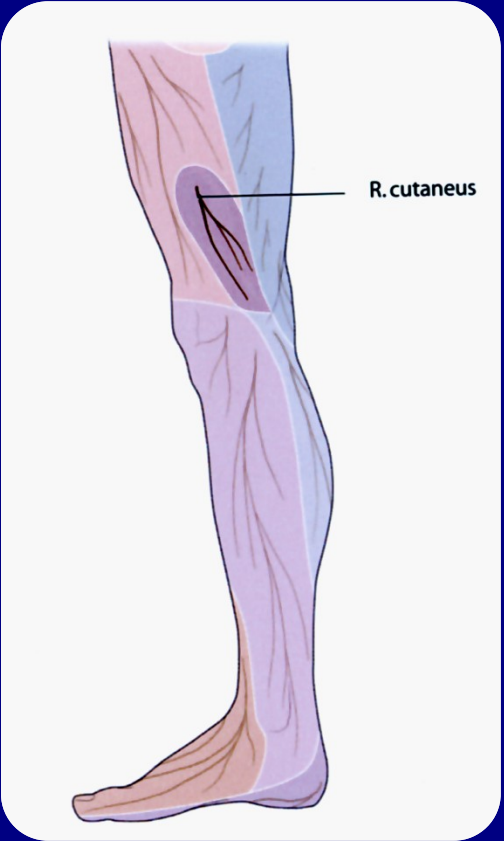
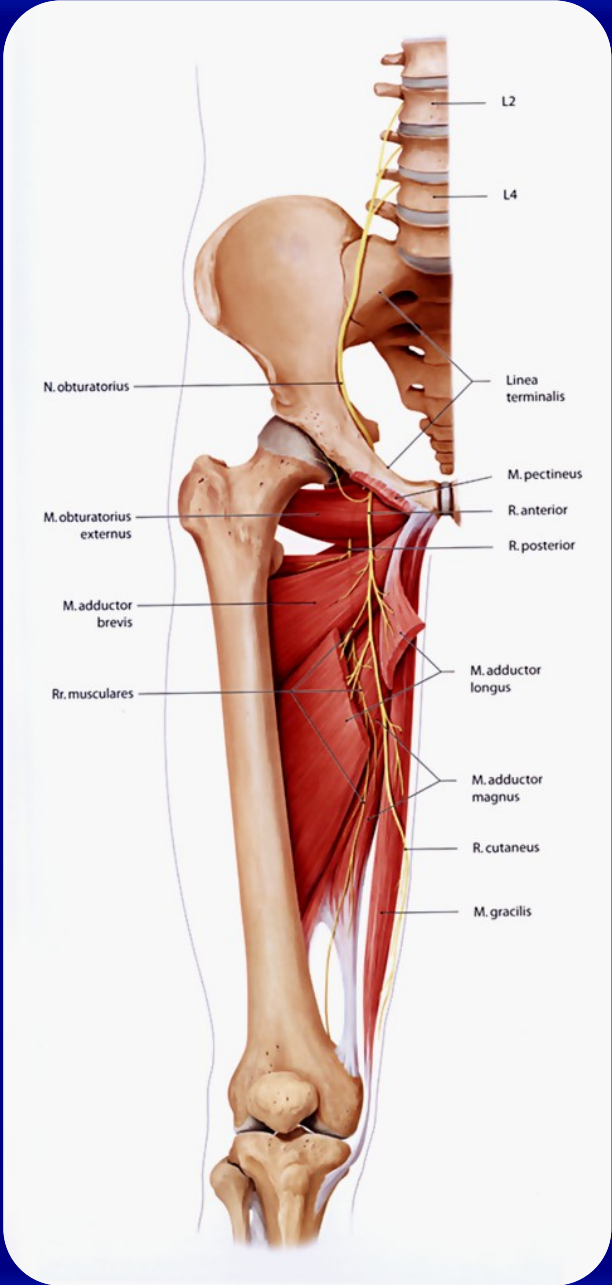


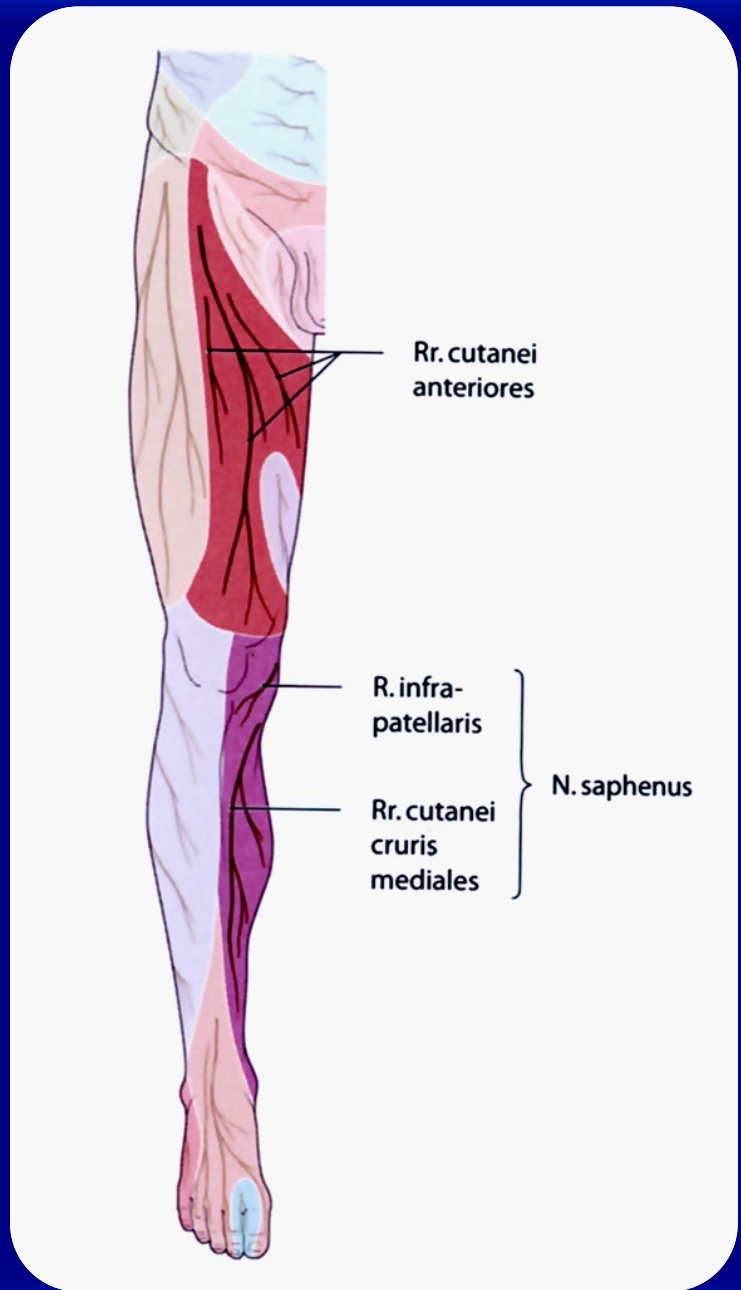
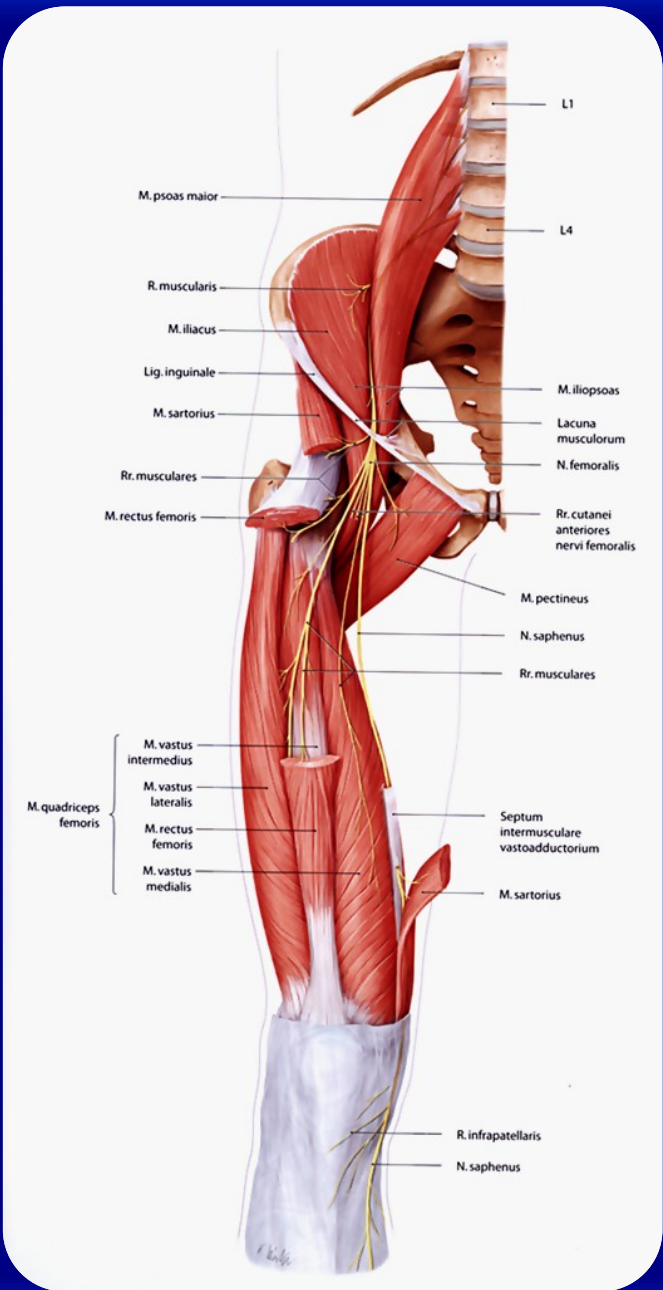
b

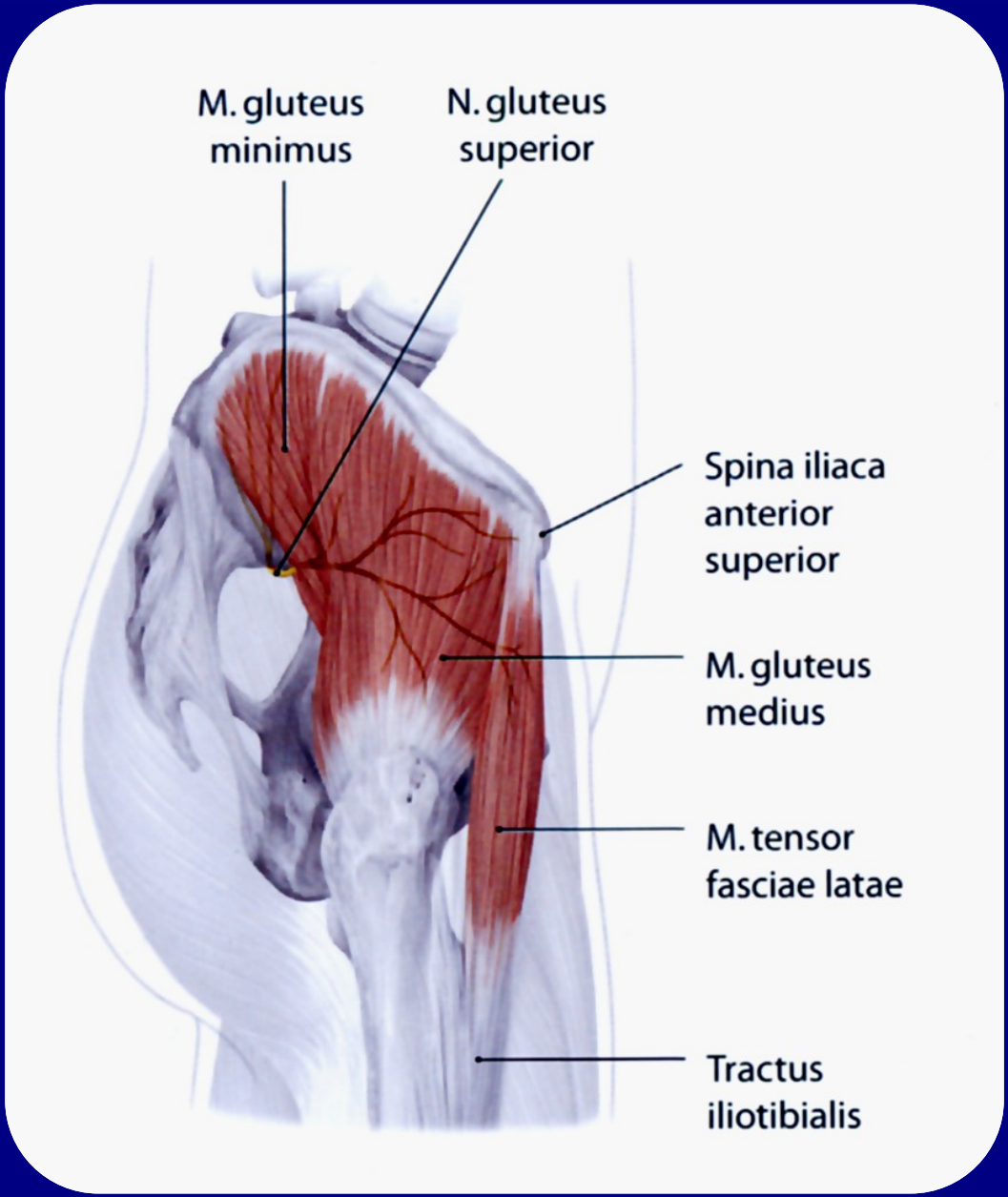


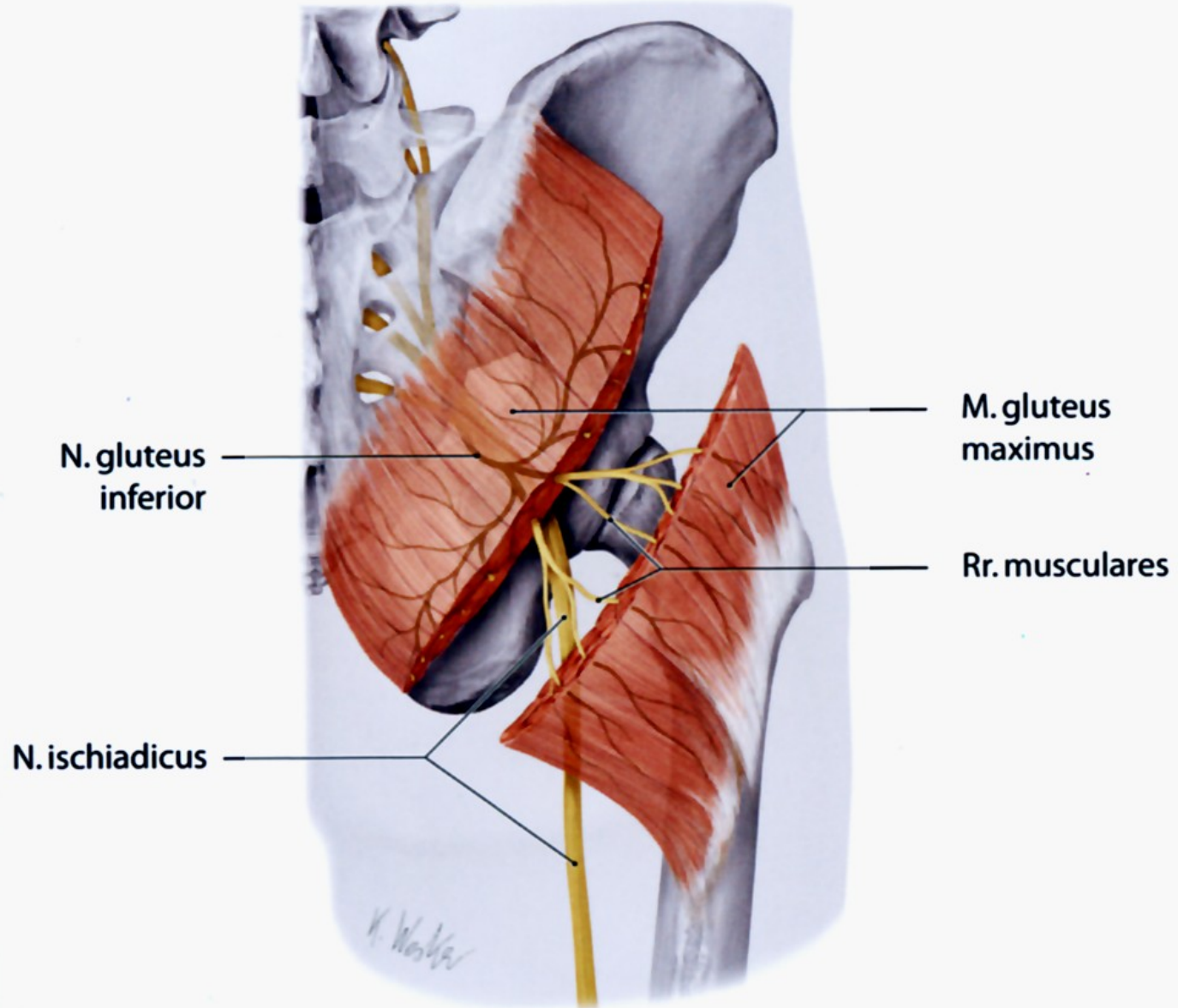


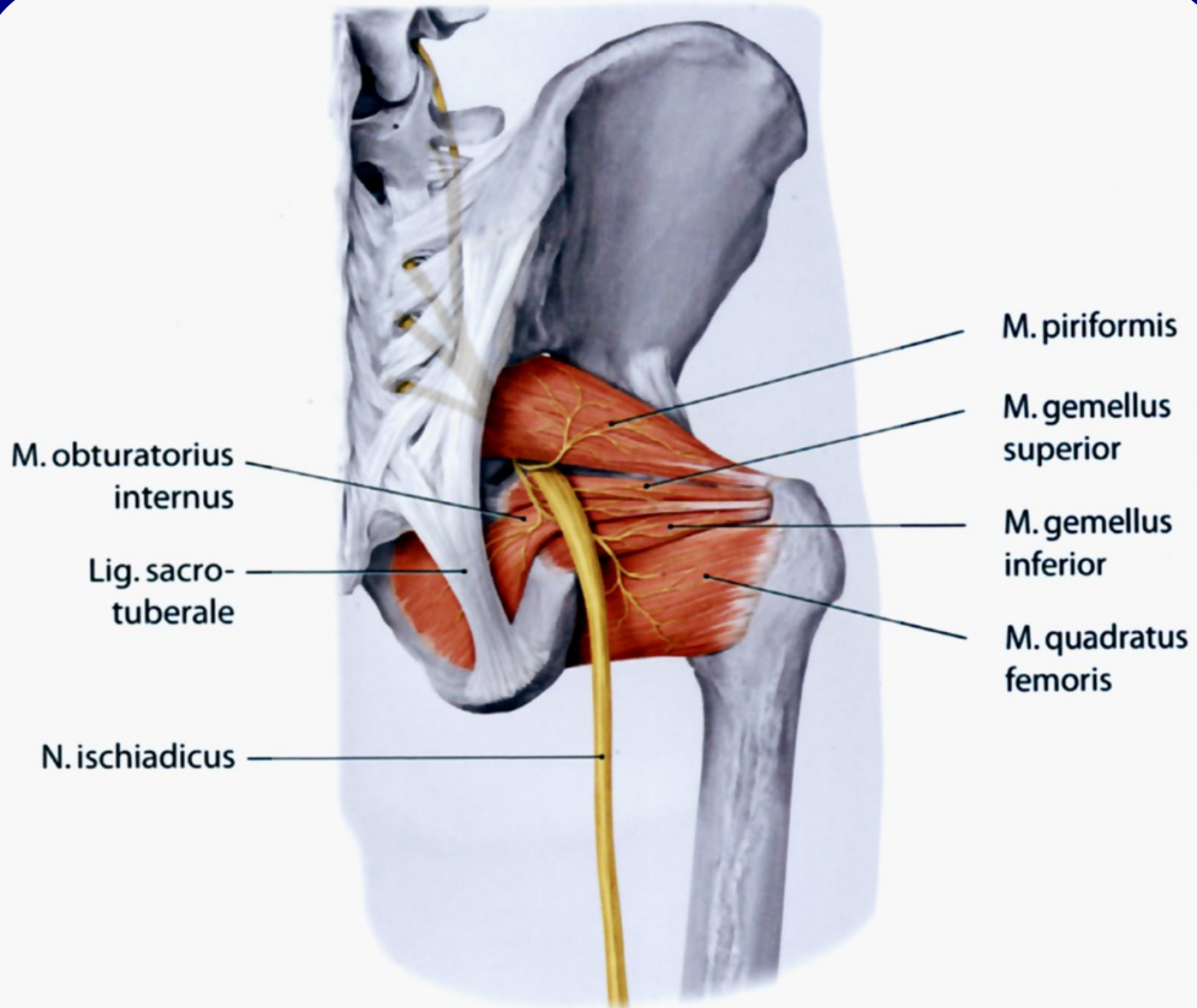


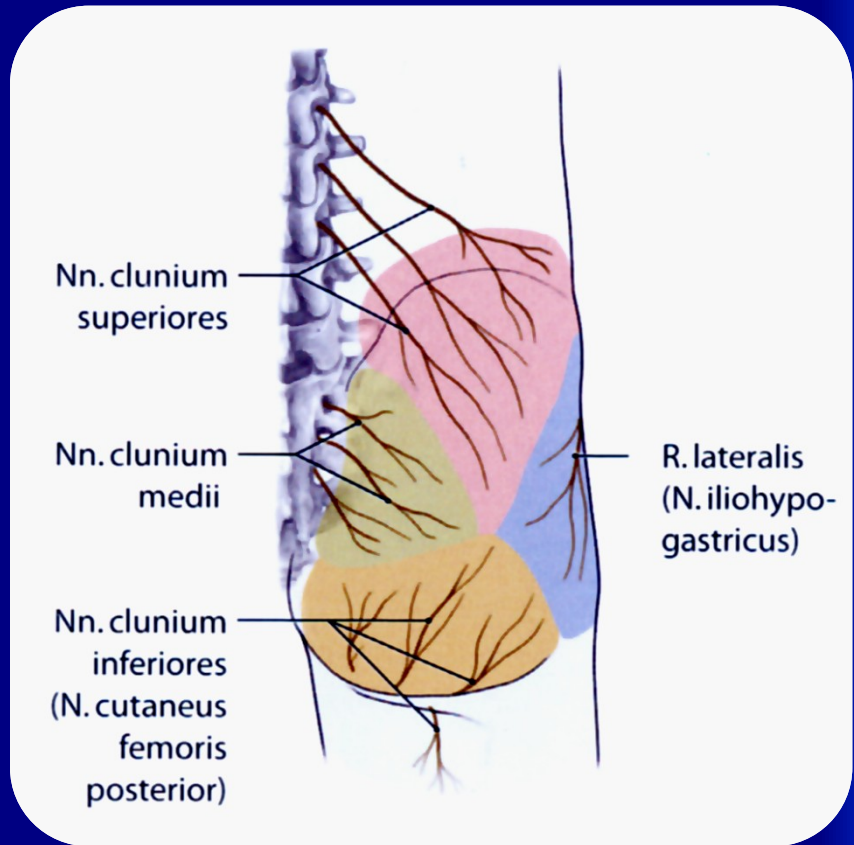
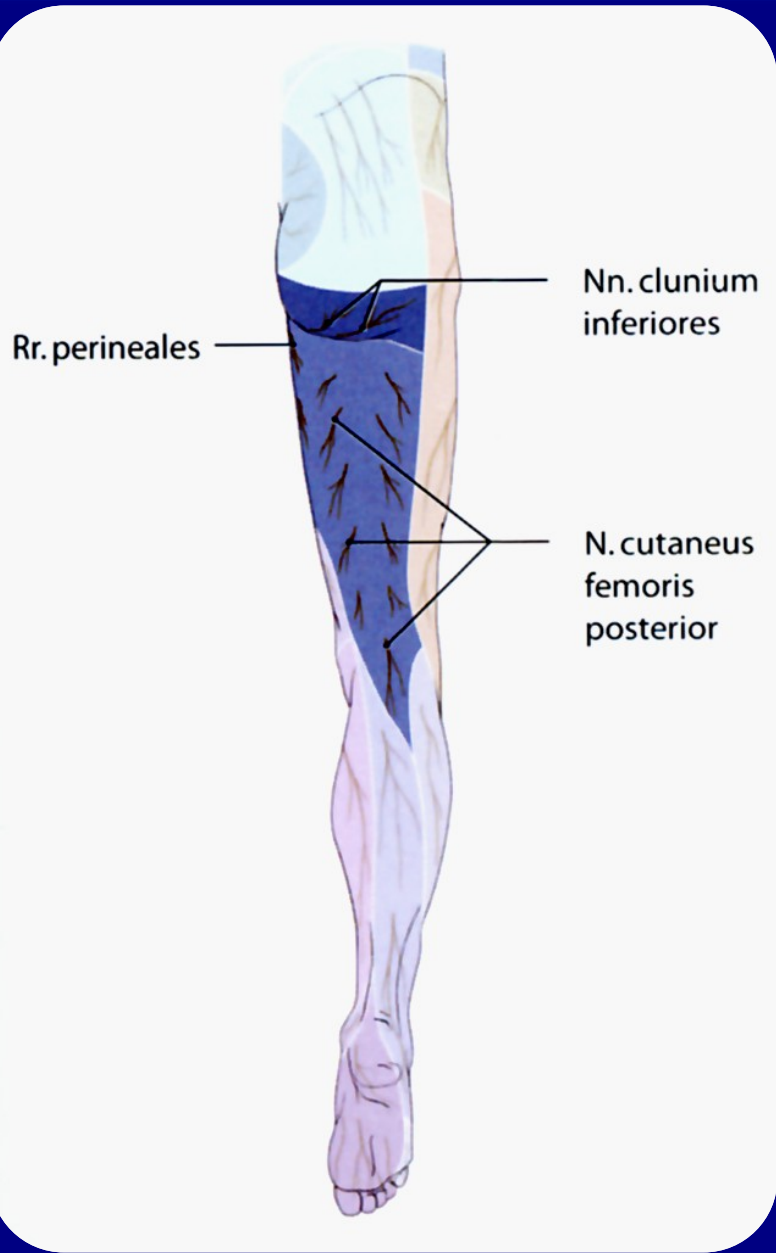


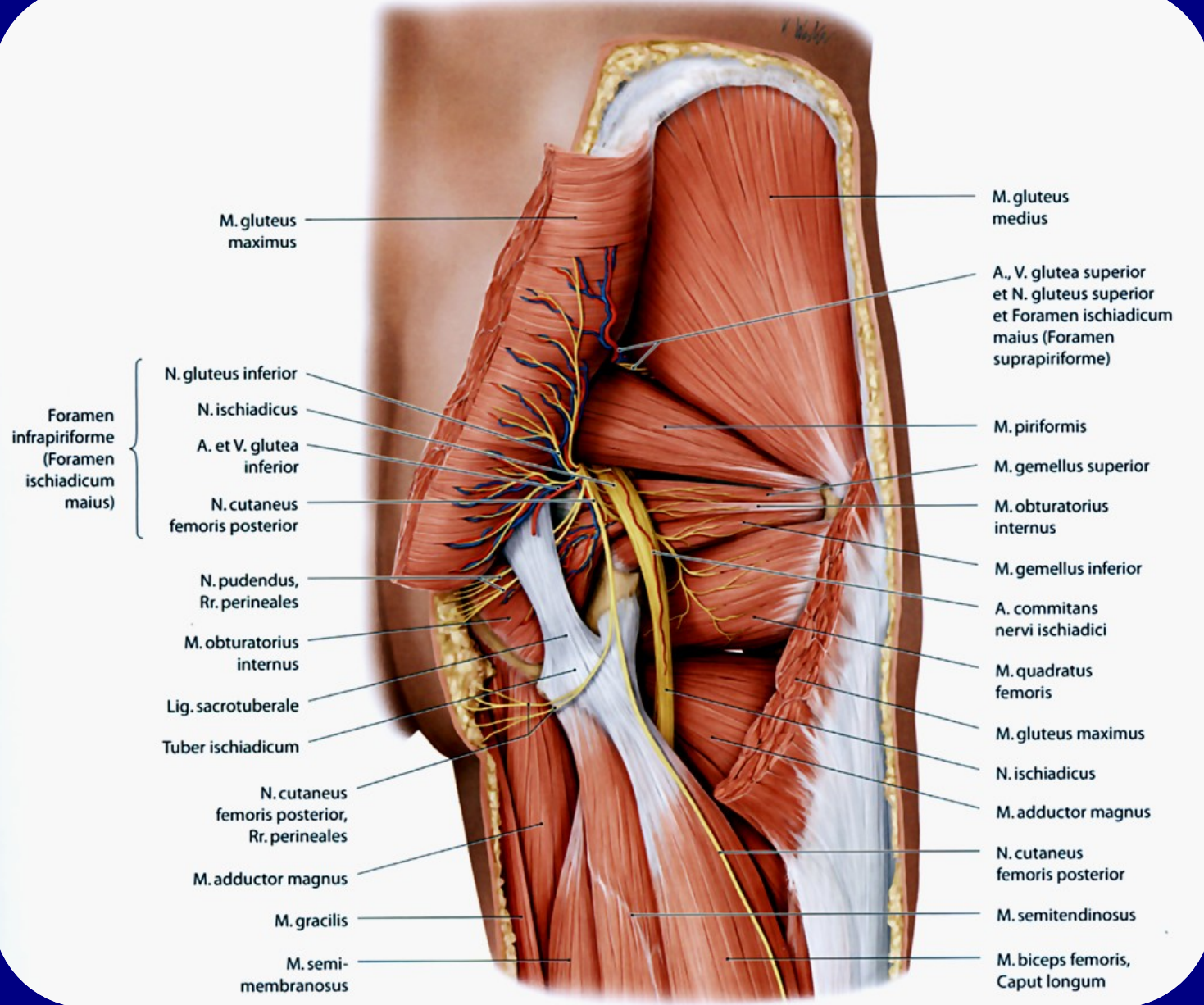












M. gluteus maximus

M. gluteus medius

A., V. glutea superior et N. gluteus superior et Foramen ischiadicum maius (Foramen suprapiriforme)

Foramen infrapiriforme (Foramen ischiadicum maius)

N. gluteus inferior

N. ischiadicus

A. et V. glutea inferior

N. cutaneus femoris posterior

M. piriformis

M. gemellus superior

M. obturatorius internus

M. gemellus inferior

N. pudendus, Rr. perineales

M. obturatorius internus

Lig. sacrotuberale

Tuber ischiadicum

A. commitans nervi ischiadici

M. quadratus femoris

M. gluteus maximus

N. ischiadicus

N. cutaneus femoris posterior, Rr. perineales

M. adductor magnus

M. adductor magnus

N. cutaneus femoris posterior

M. gracilis

M. semi-membranosus

M. semitendinosus

M. biceps femoris, Caput longum

M. piriformis

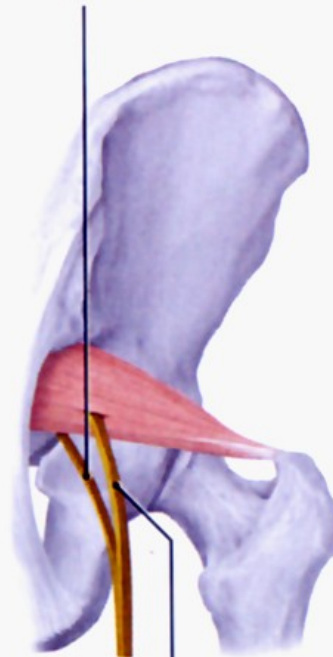


a

85%

N. ischiadicus
et Foramen
infrapiriforme

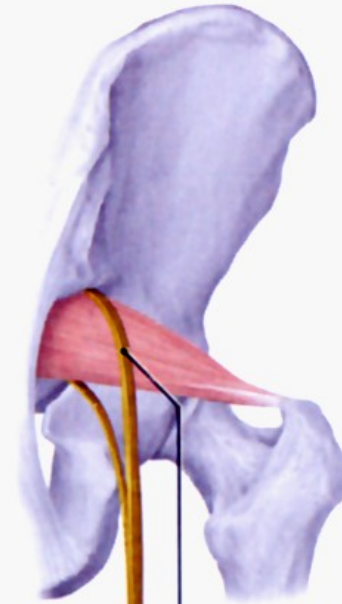
N. tibialis



b

15%

N. fibularis
communis



c

0,5%

N. fibularis communis
et Foramen
suprapiriforme

