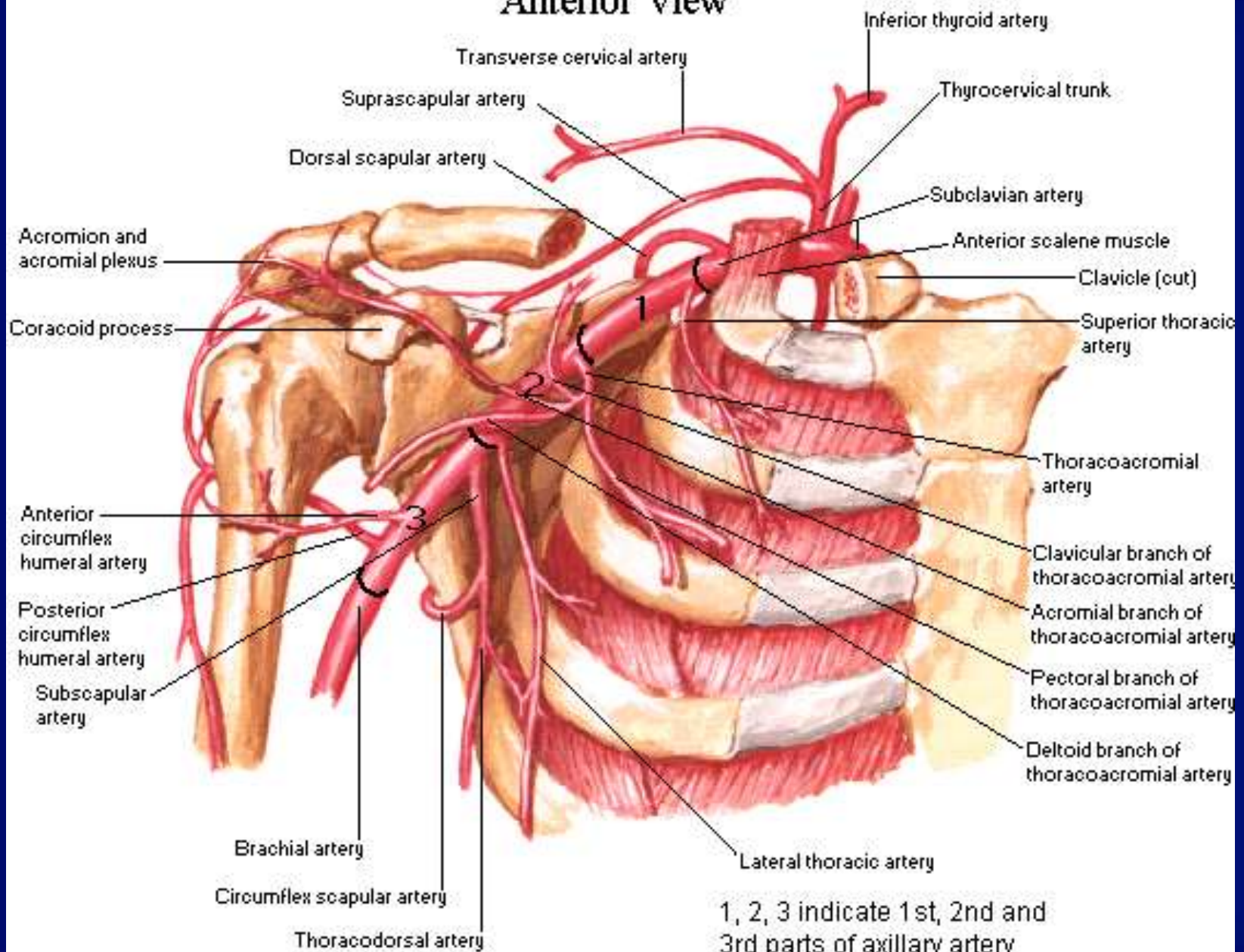


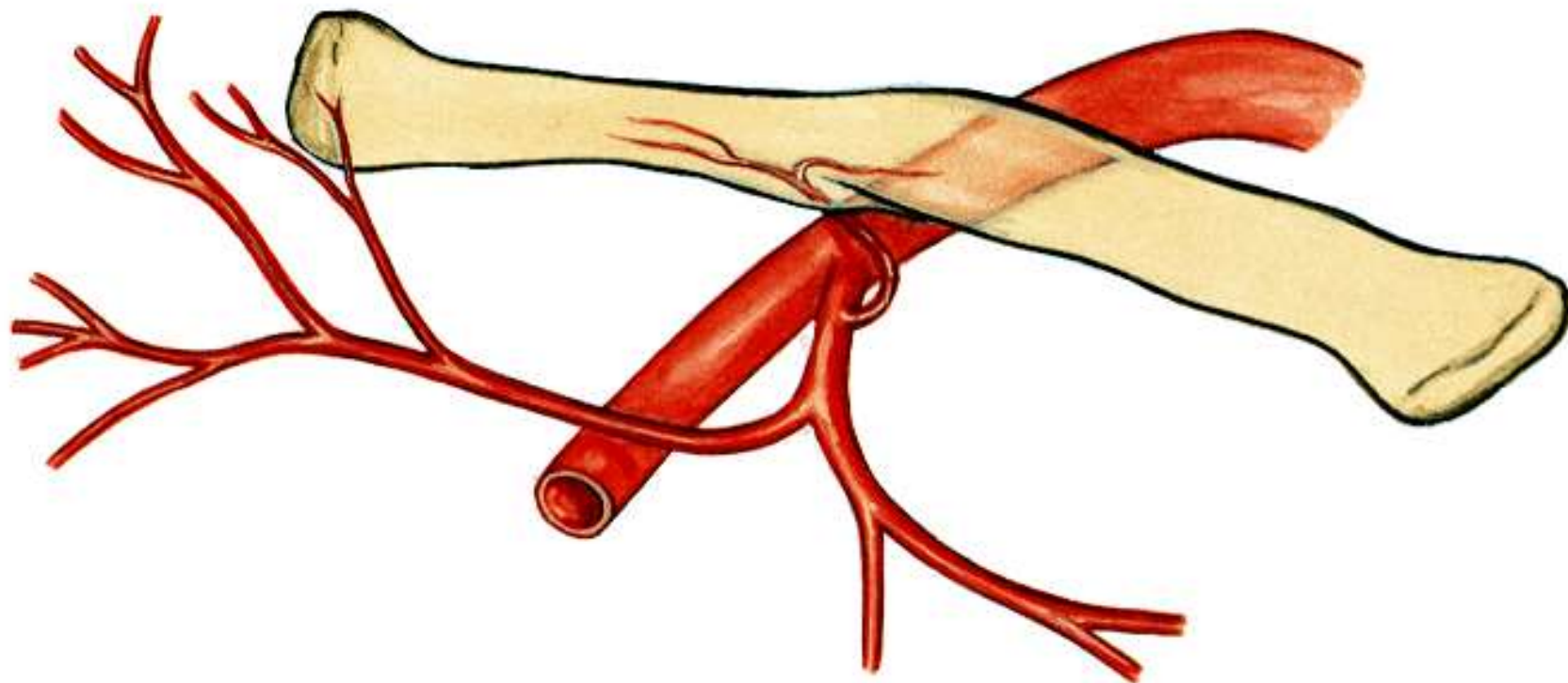
# KOŃCZYNA GÓRNA

## Naczynia

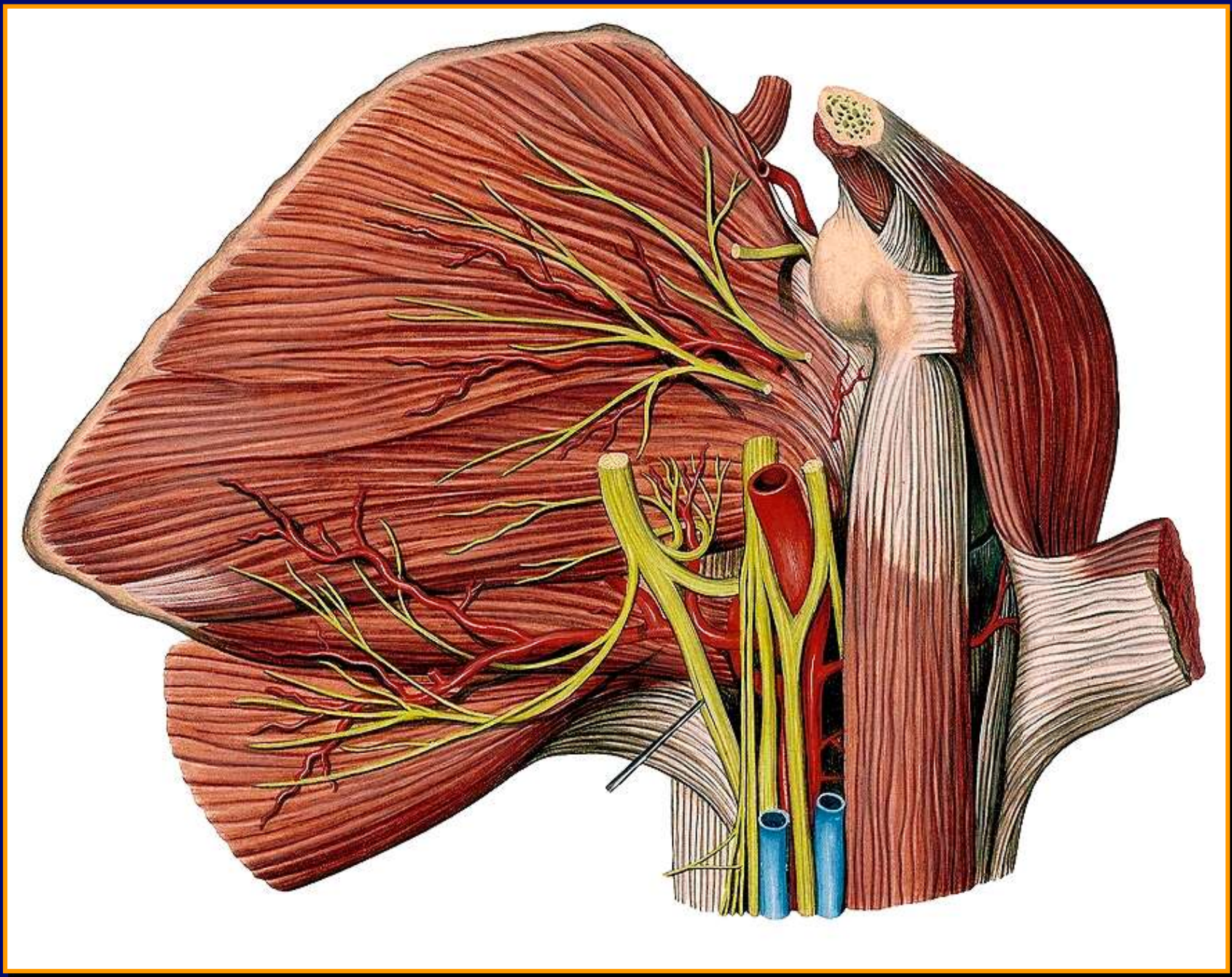
dr n. med. Jarosław Zawiliński

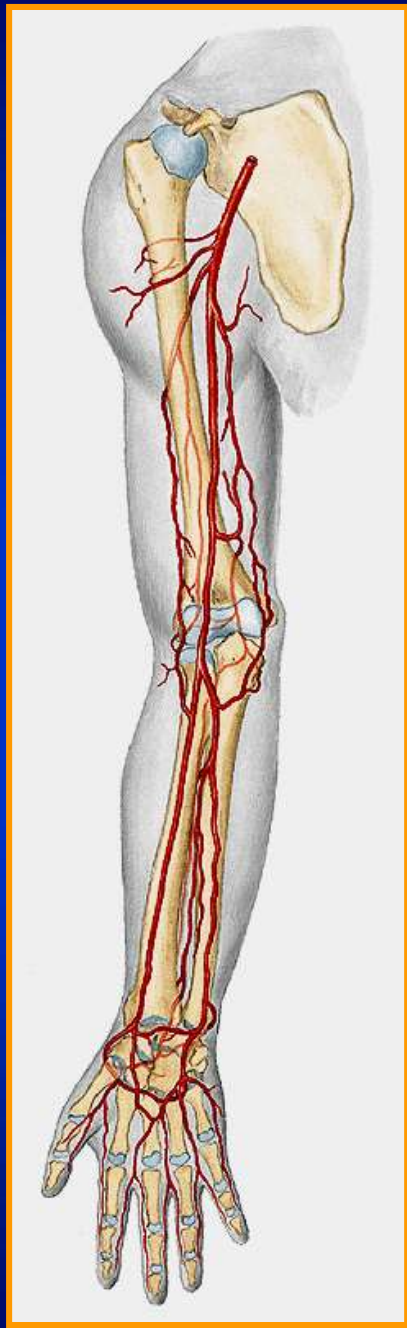
# Anterior View



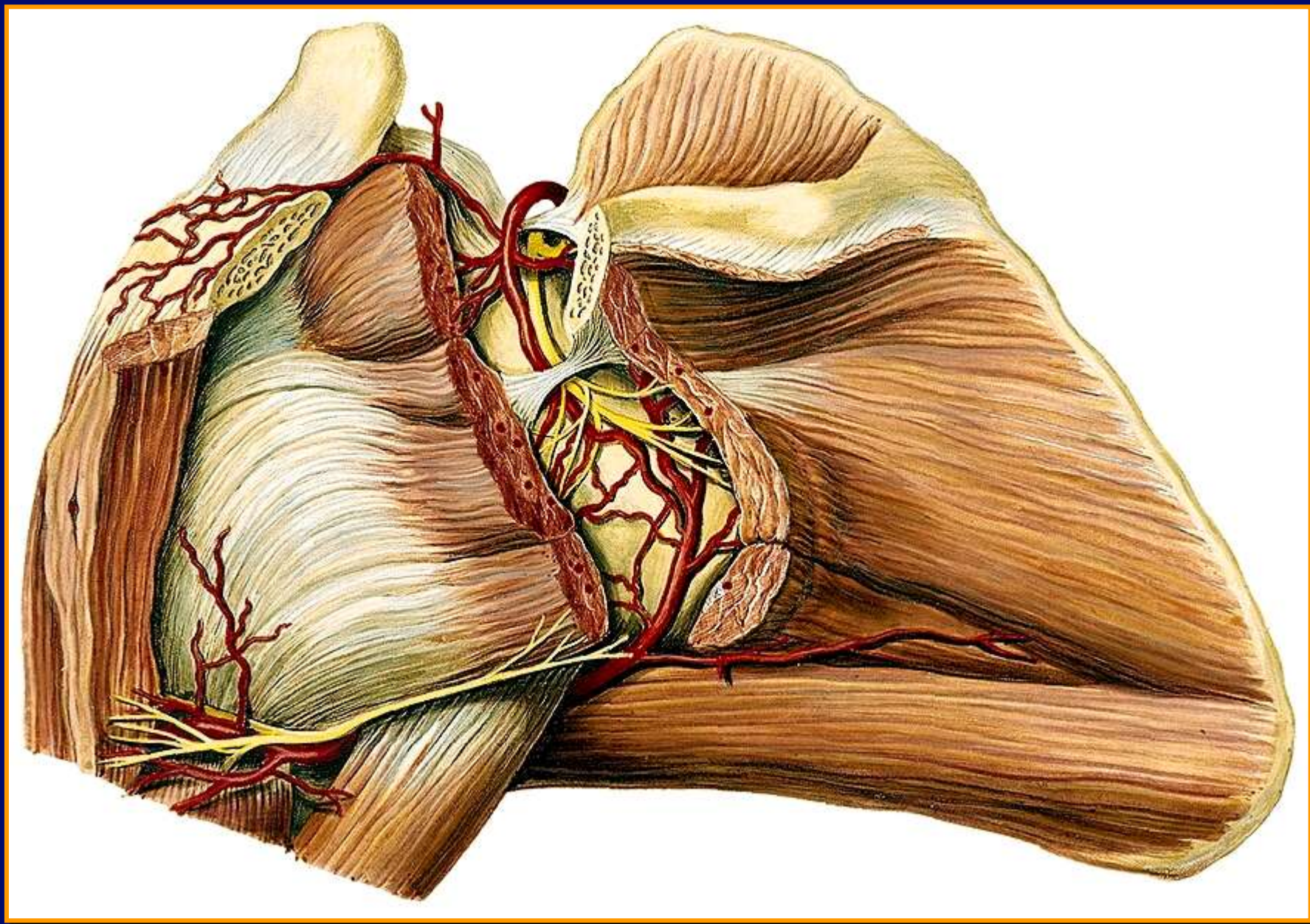


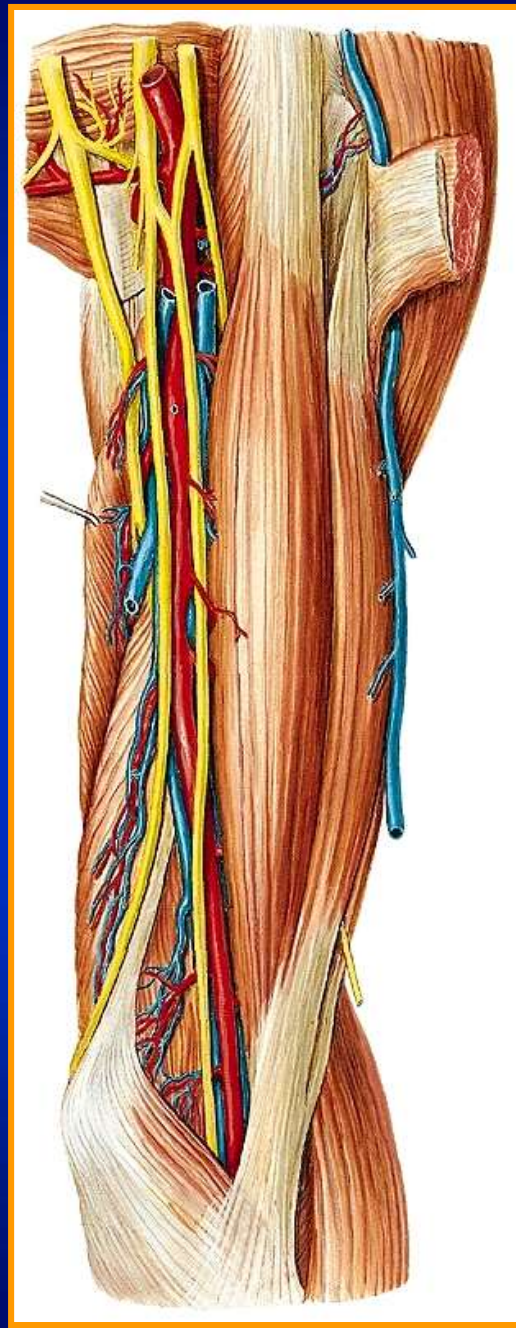




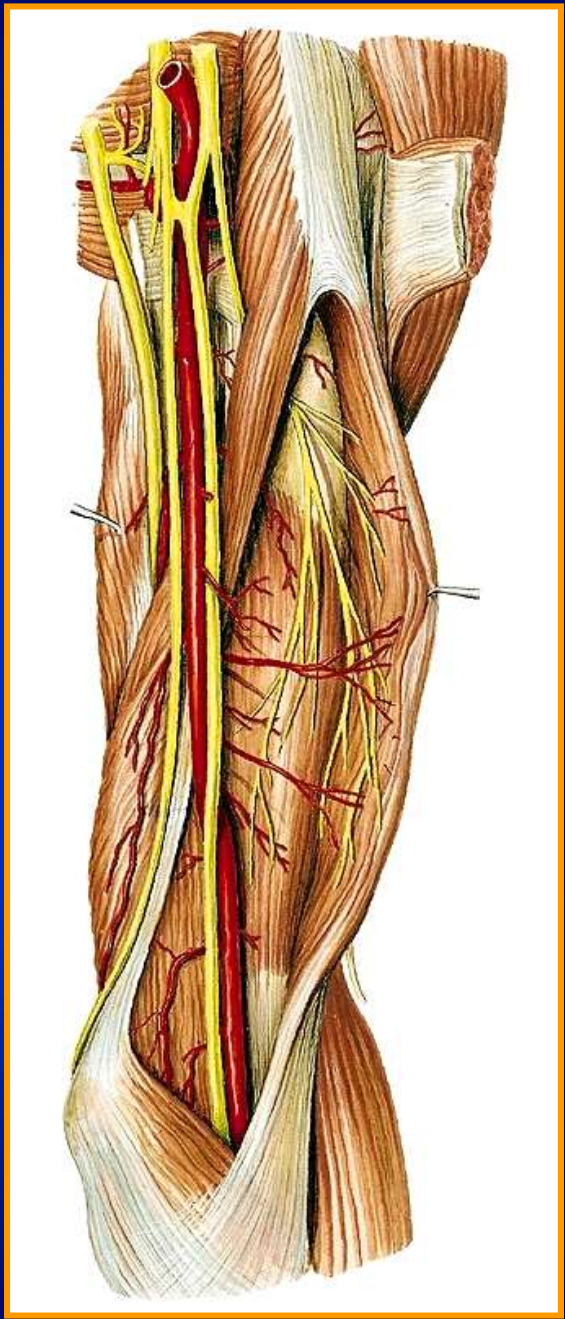




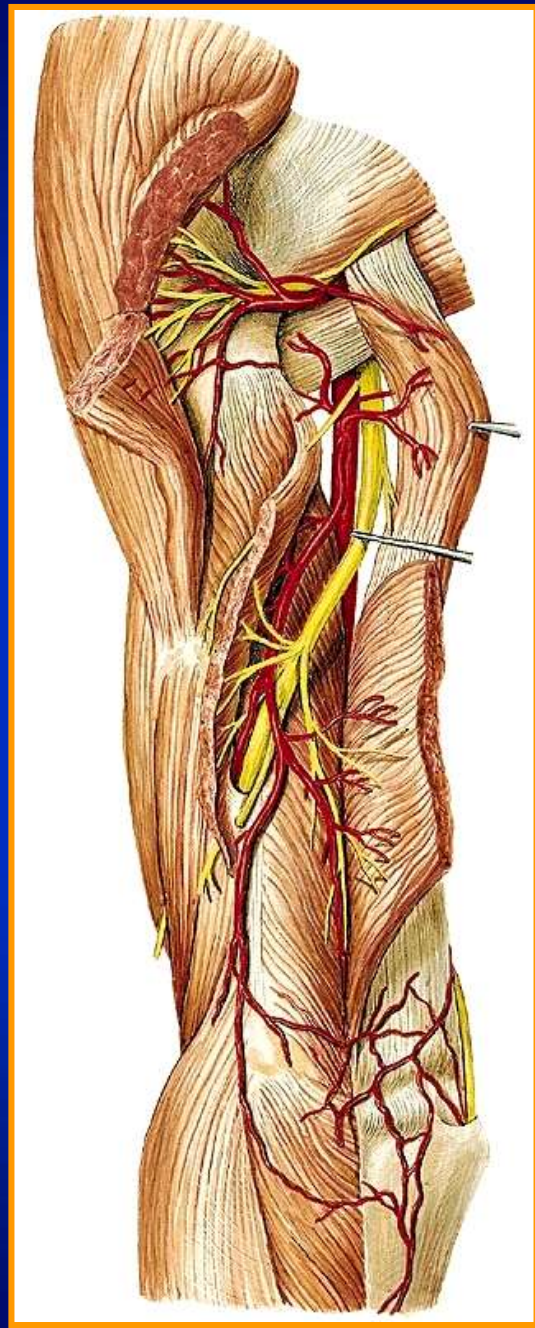


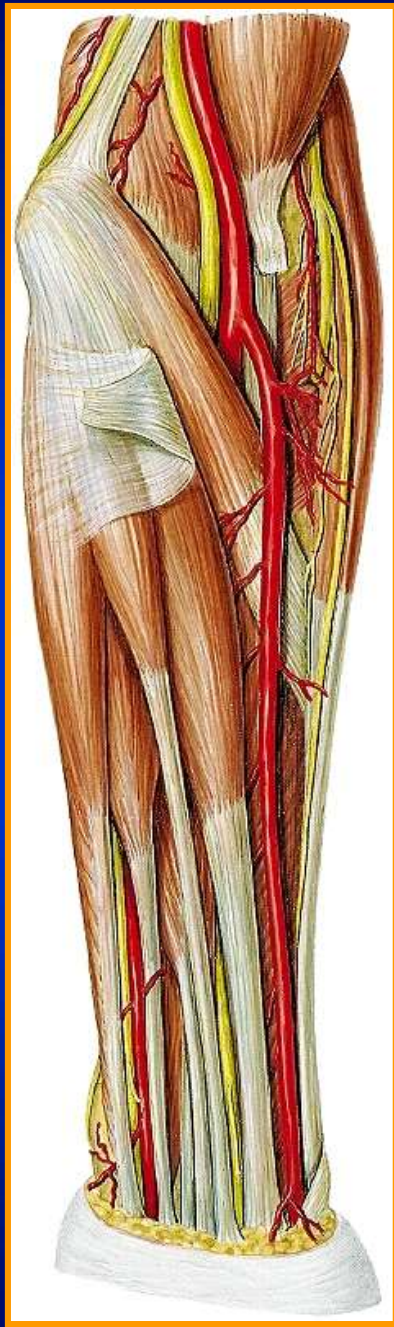


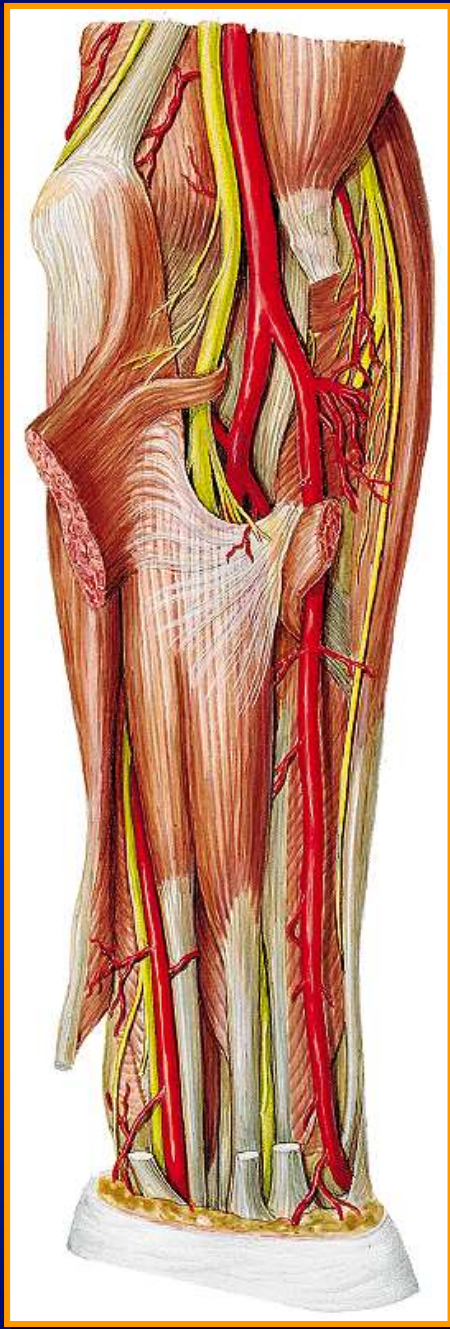




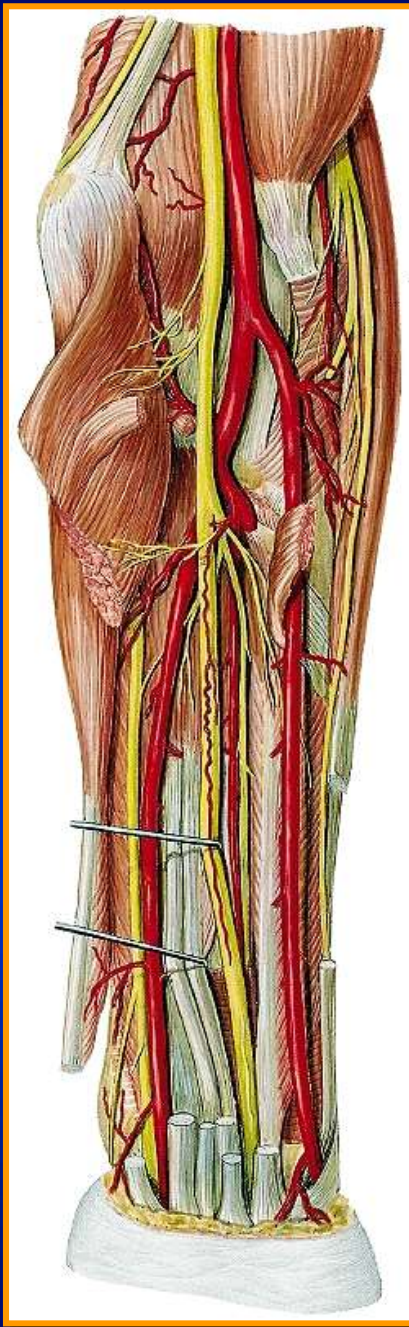


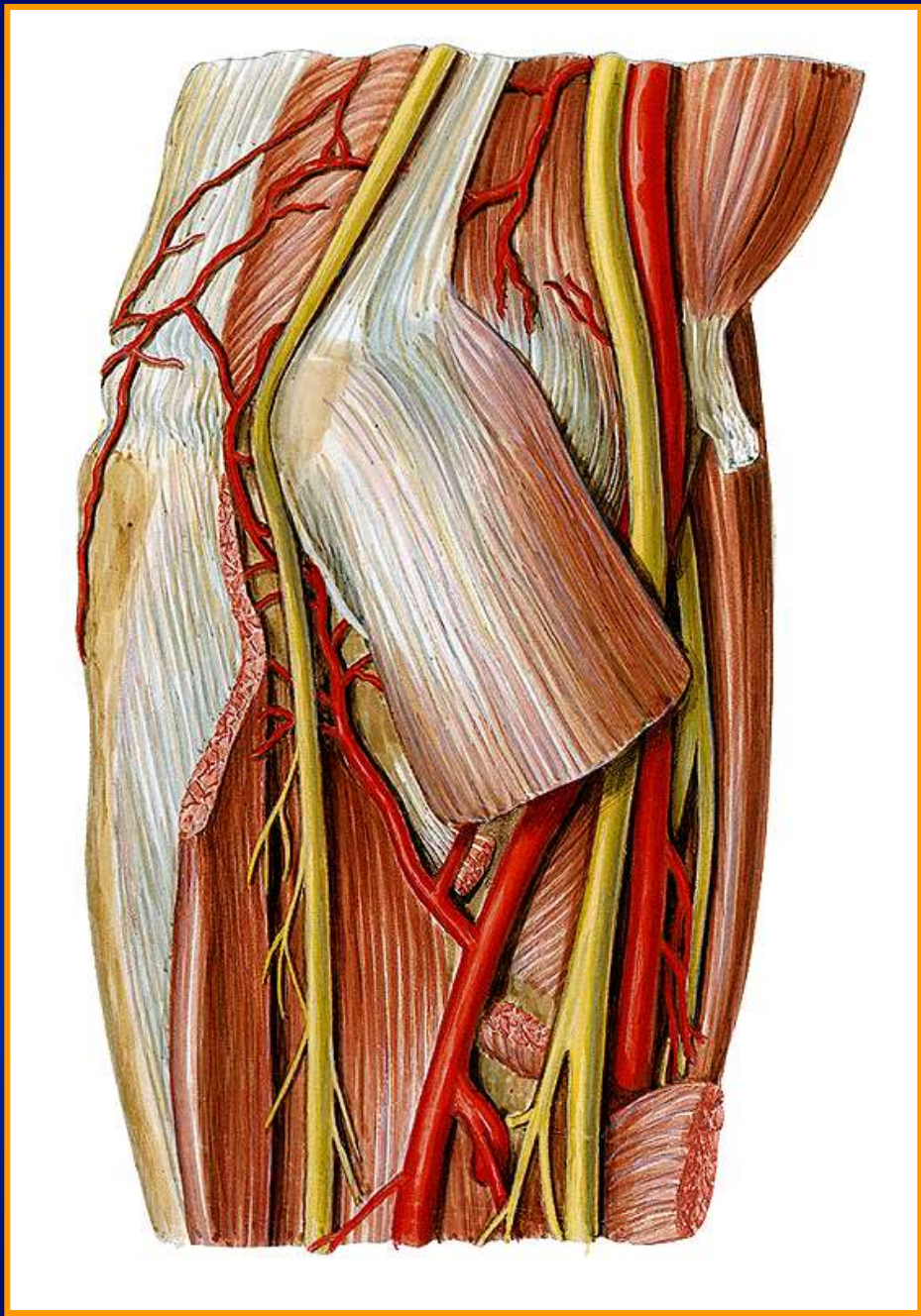


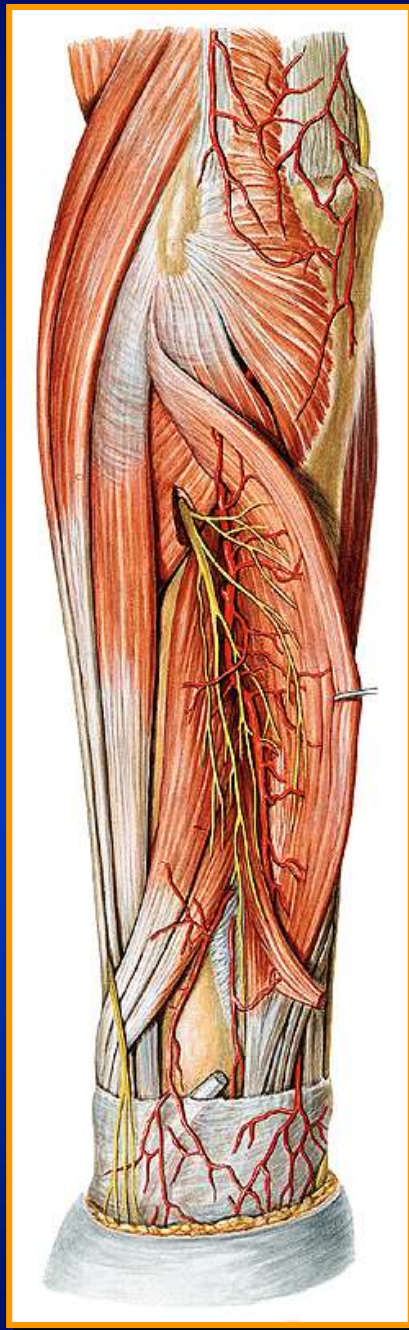




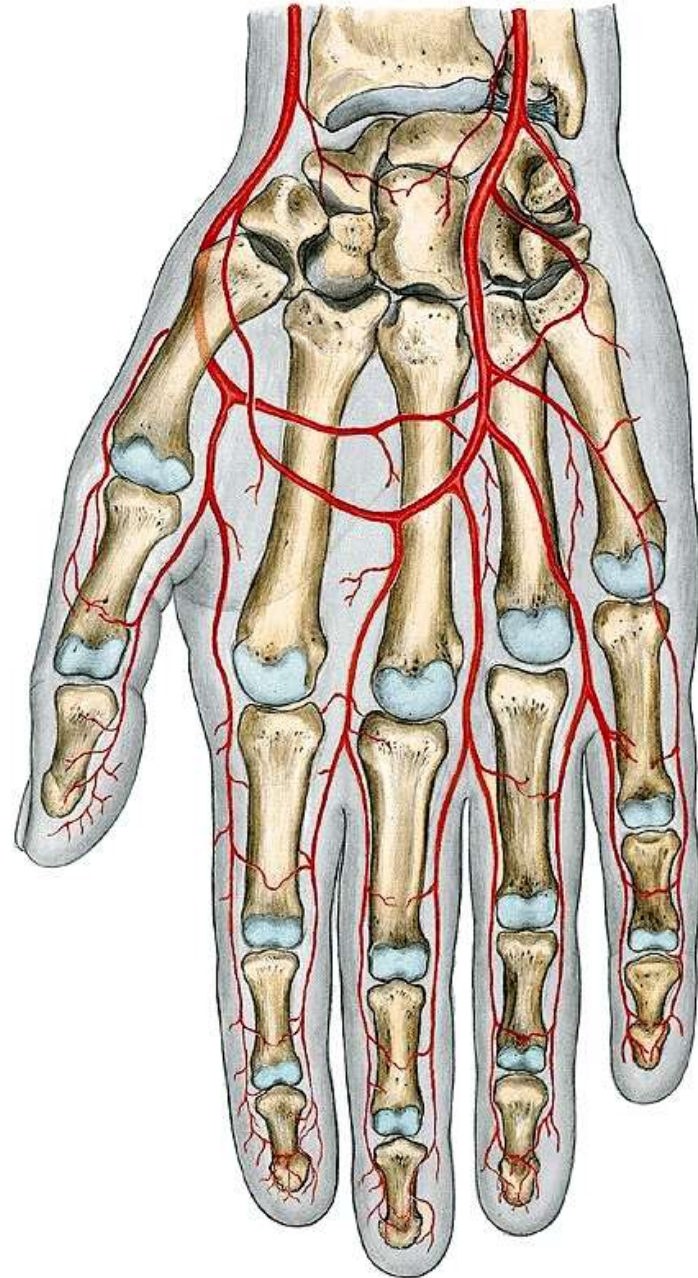


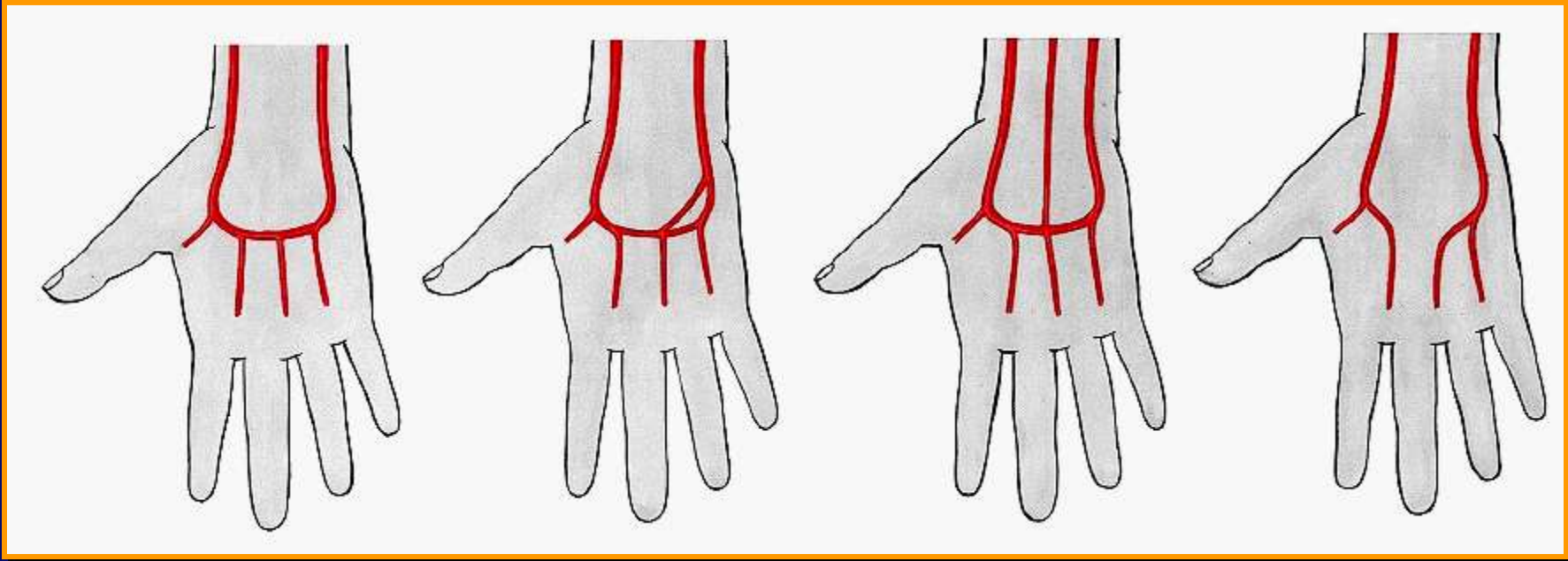


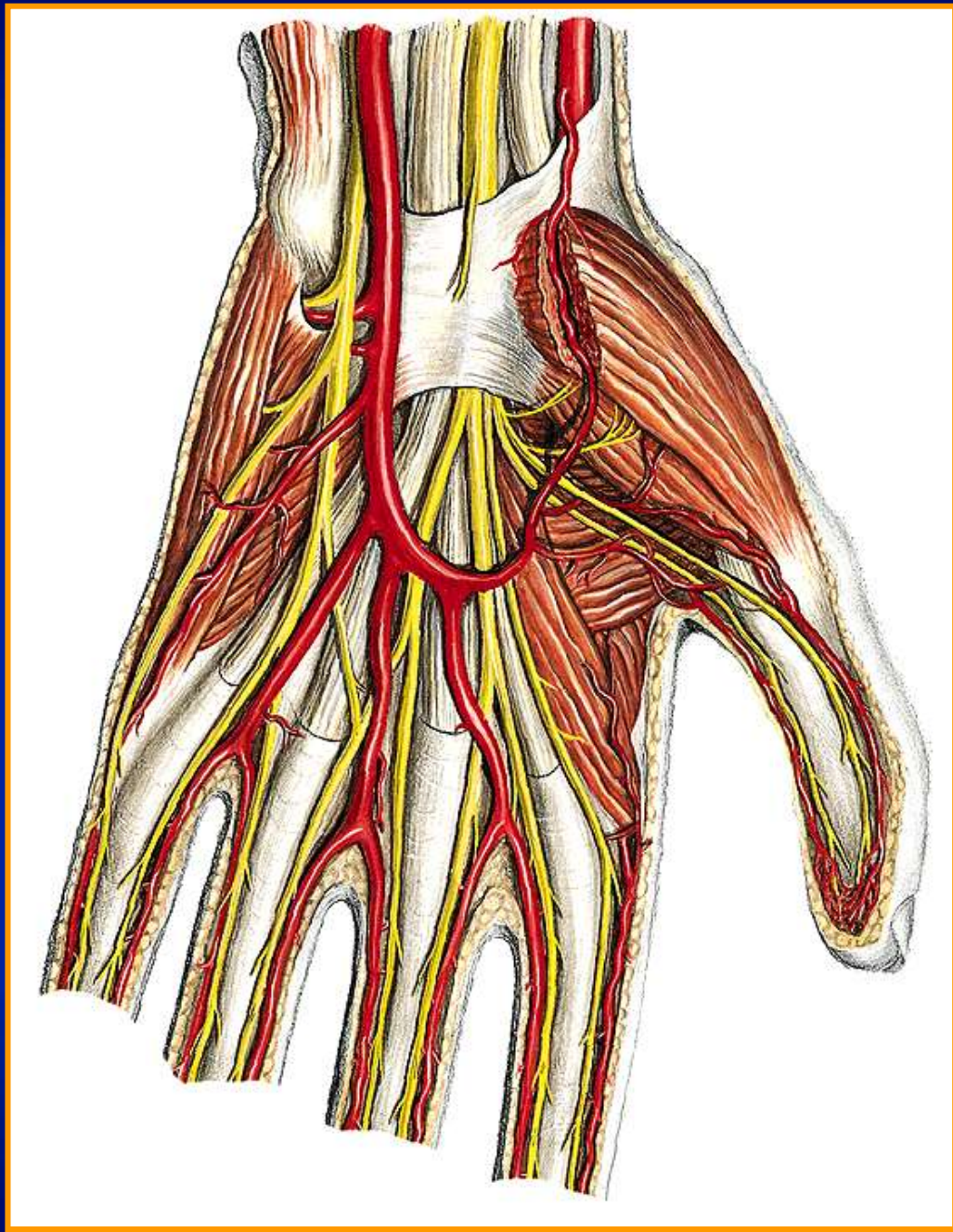




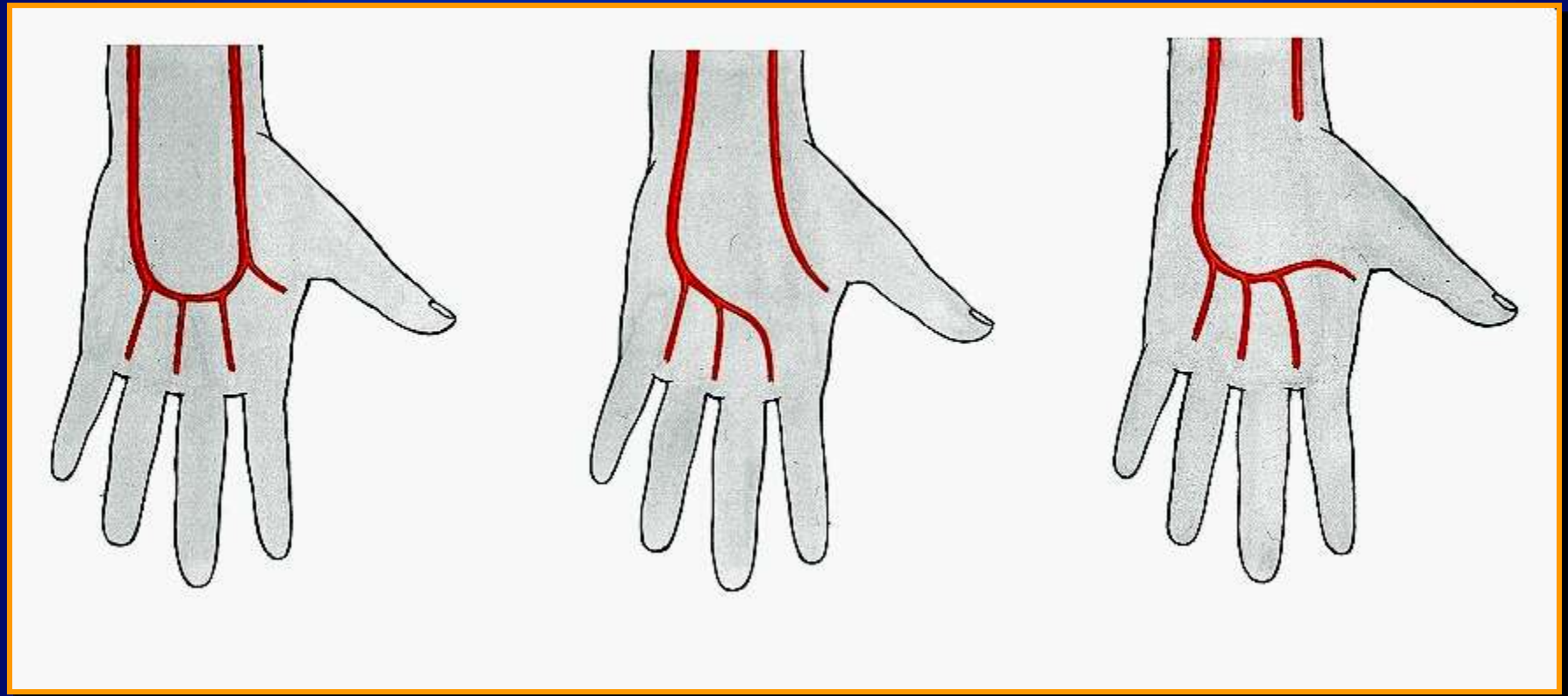


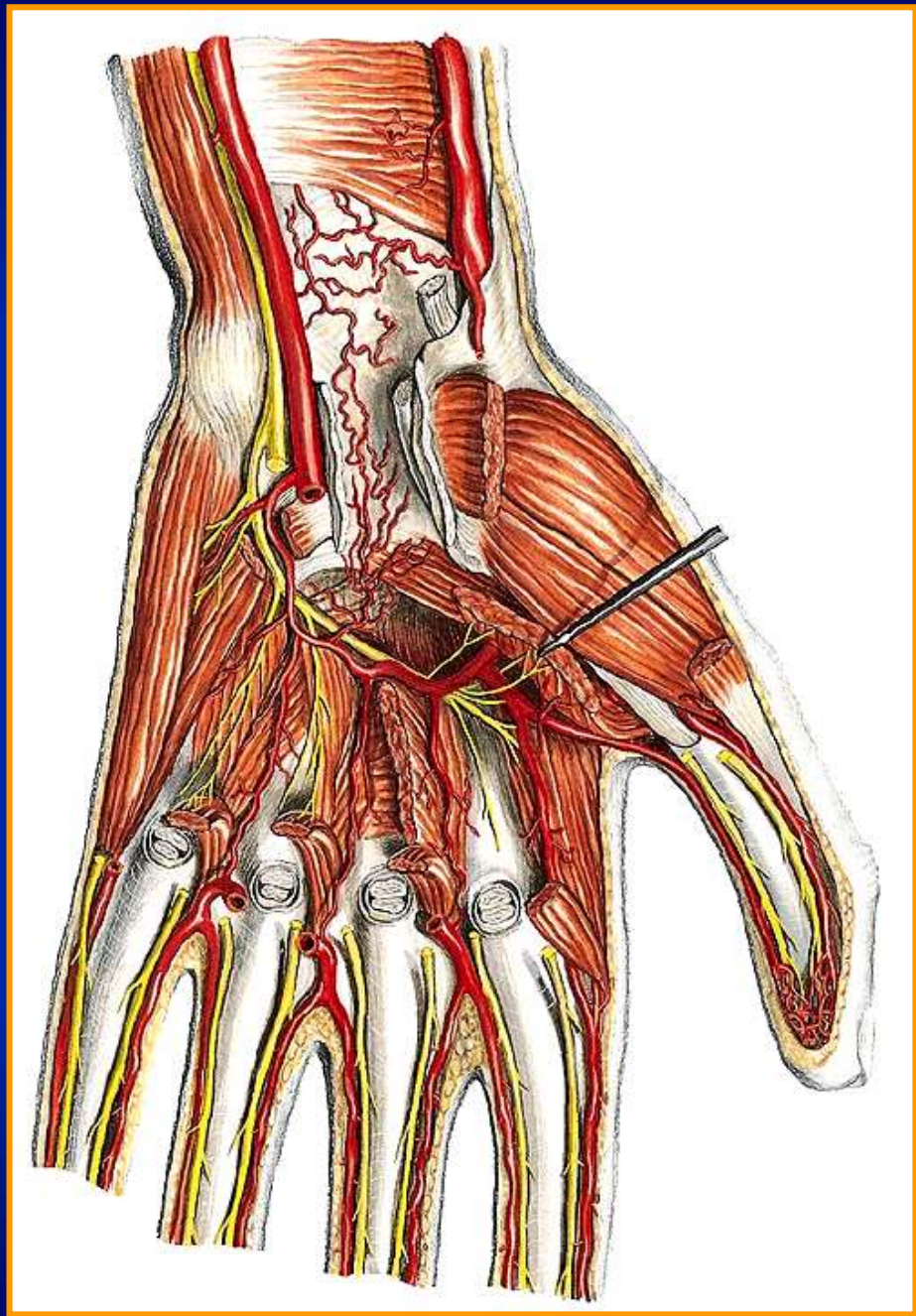


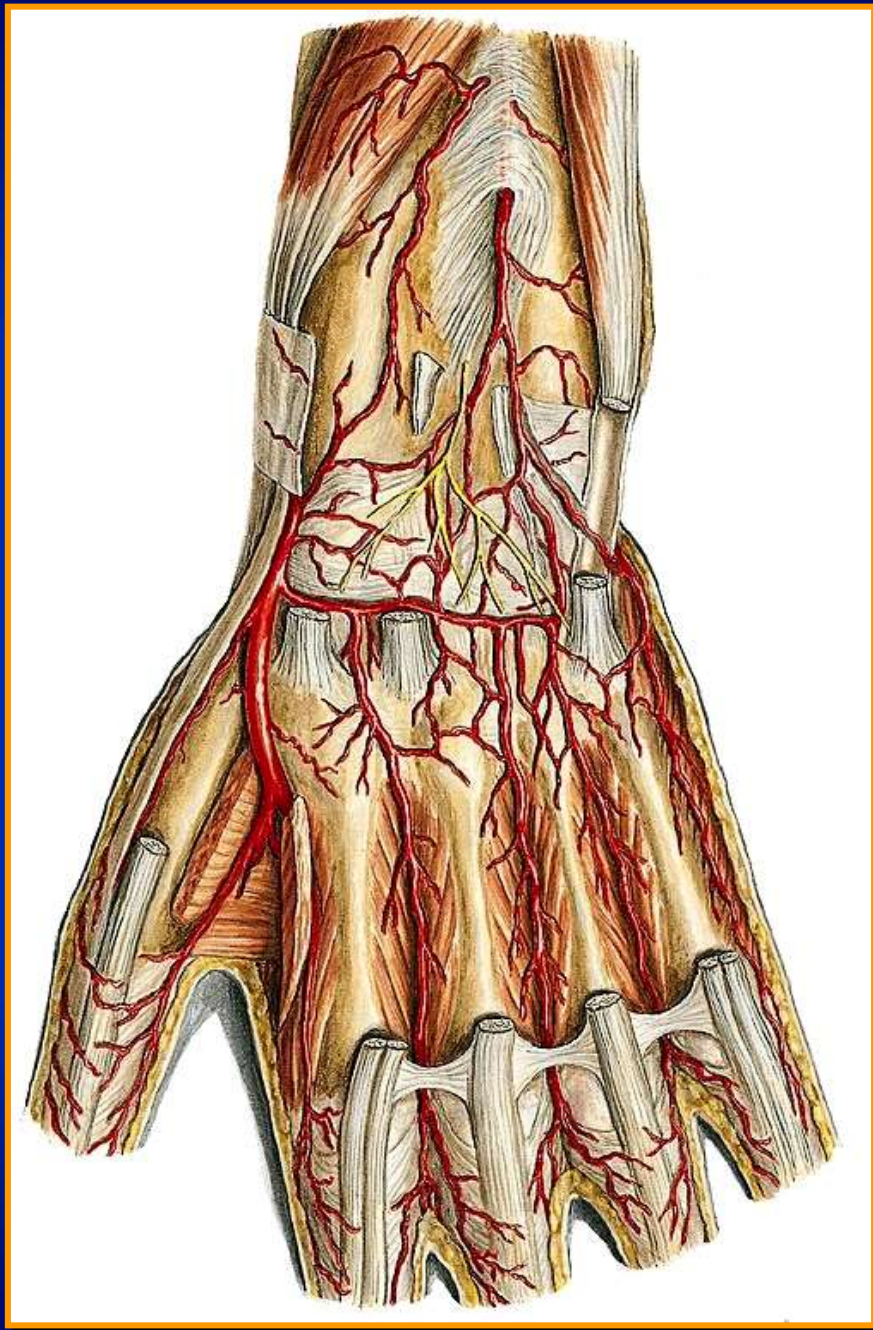




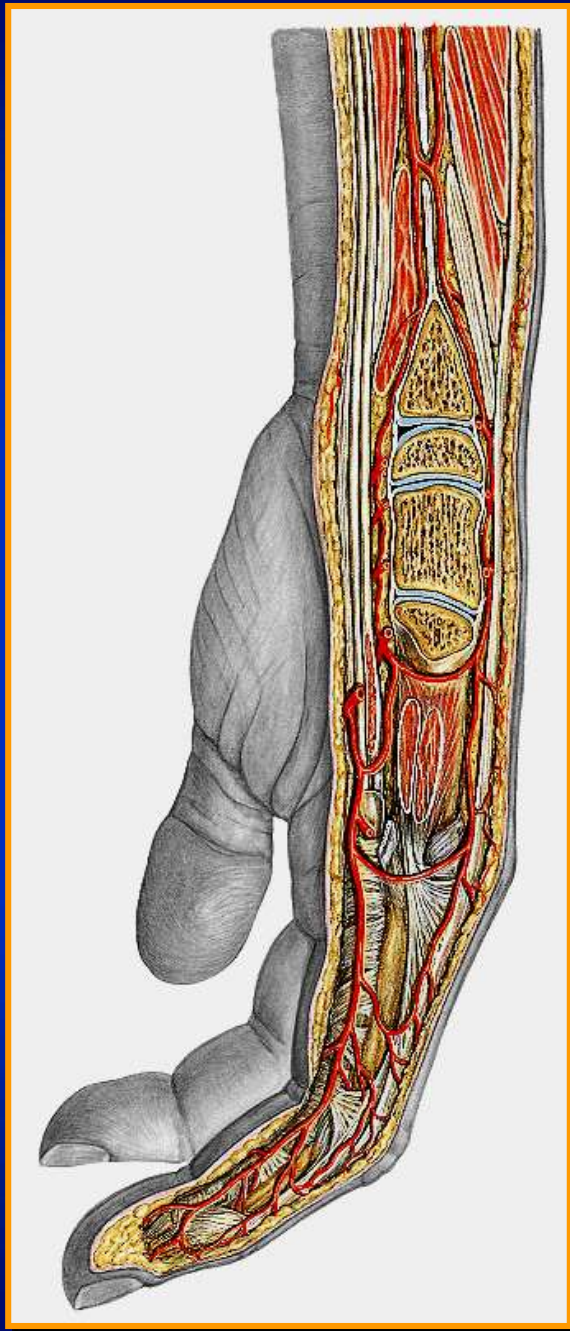


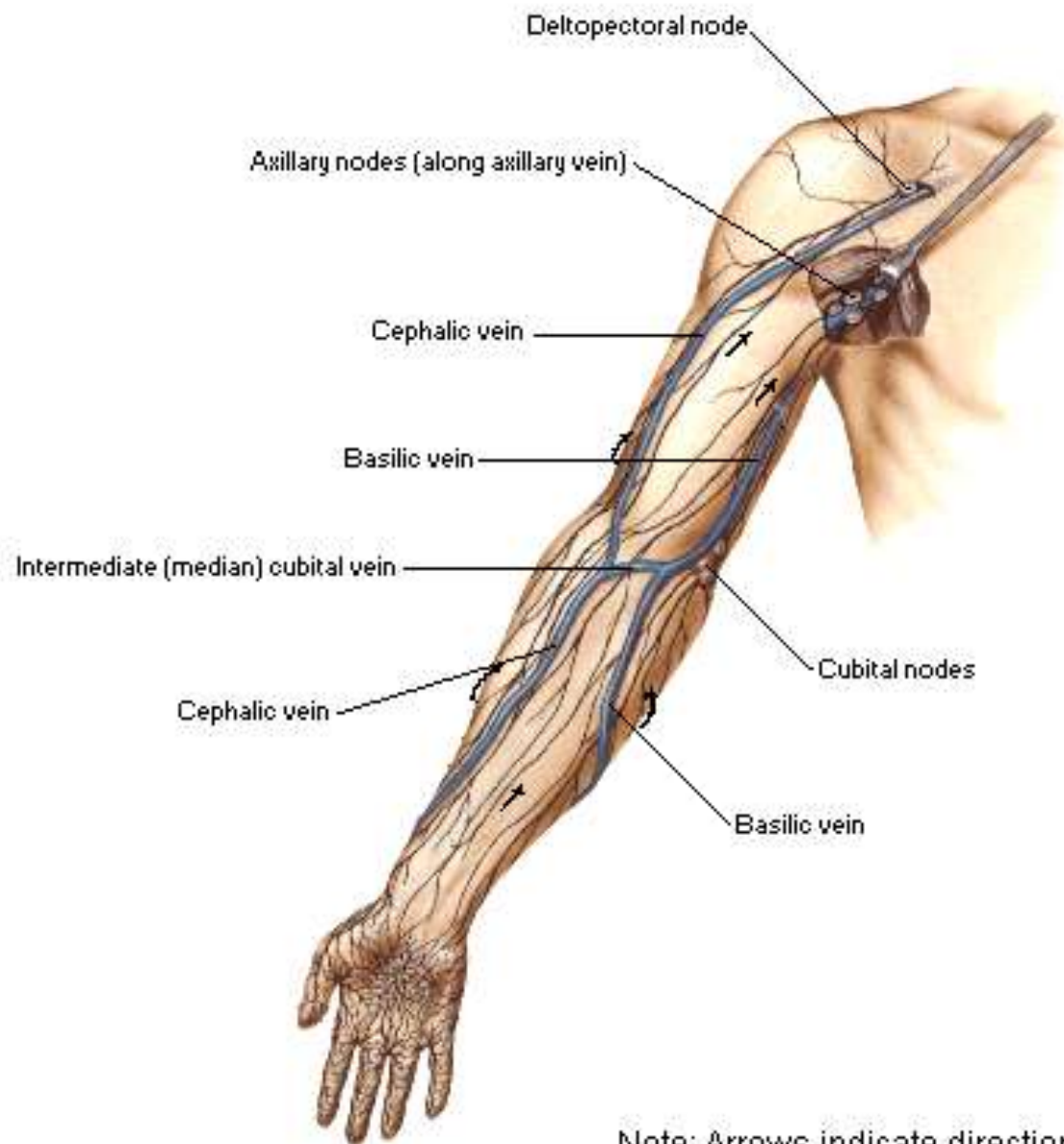




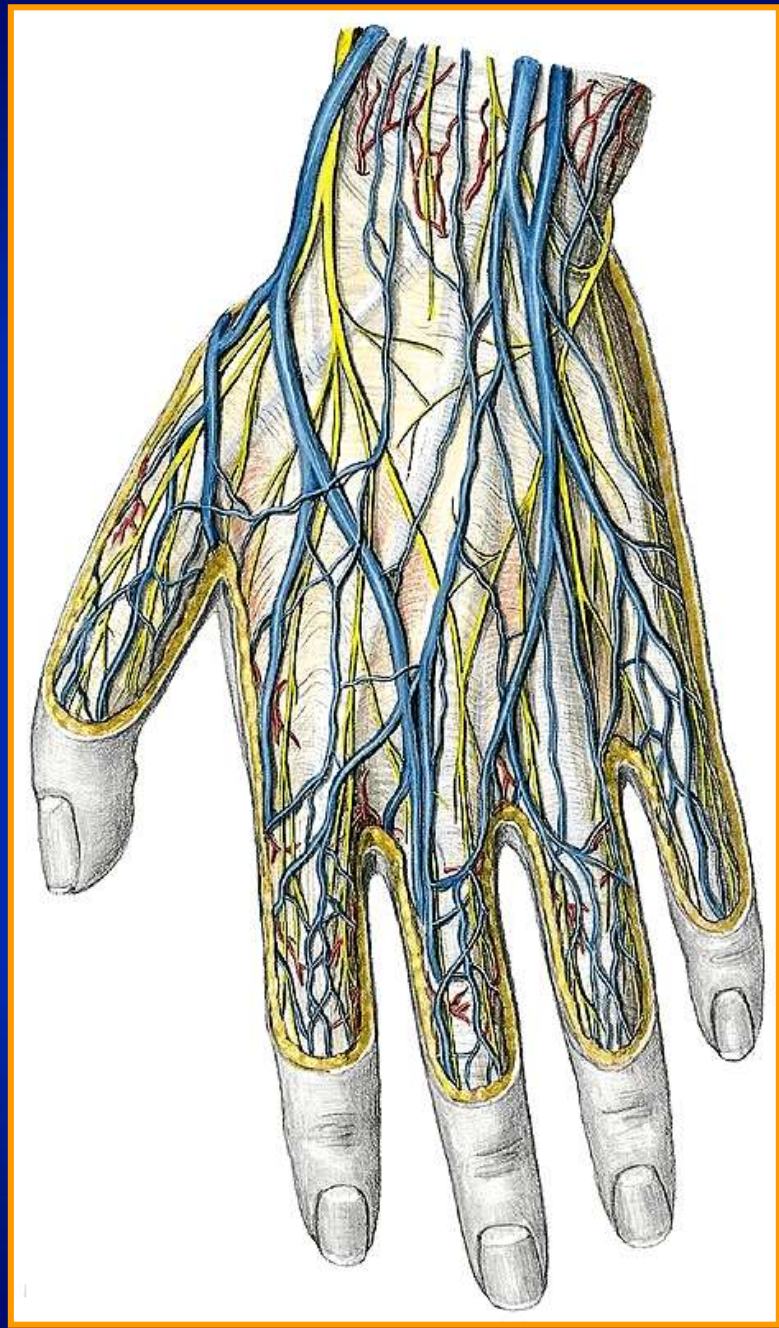




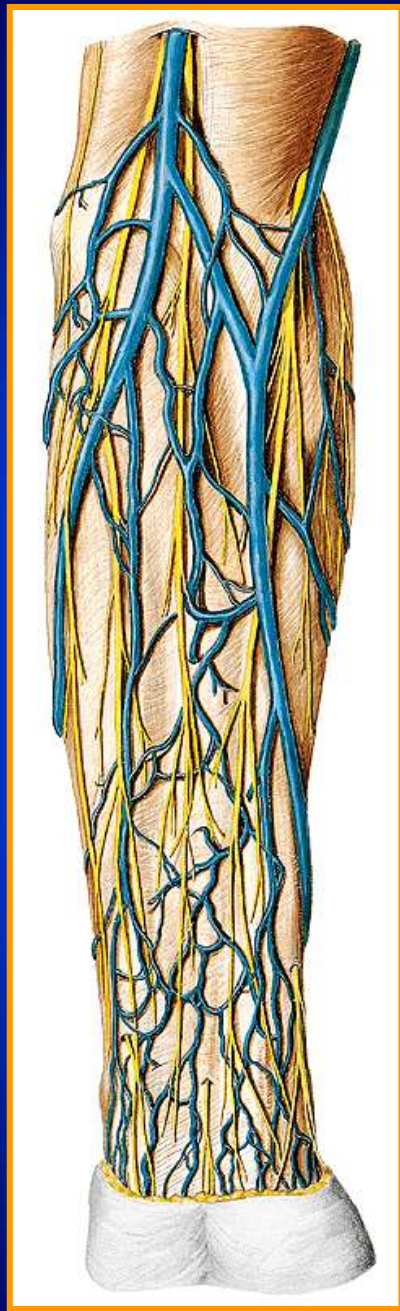


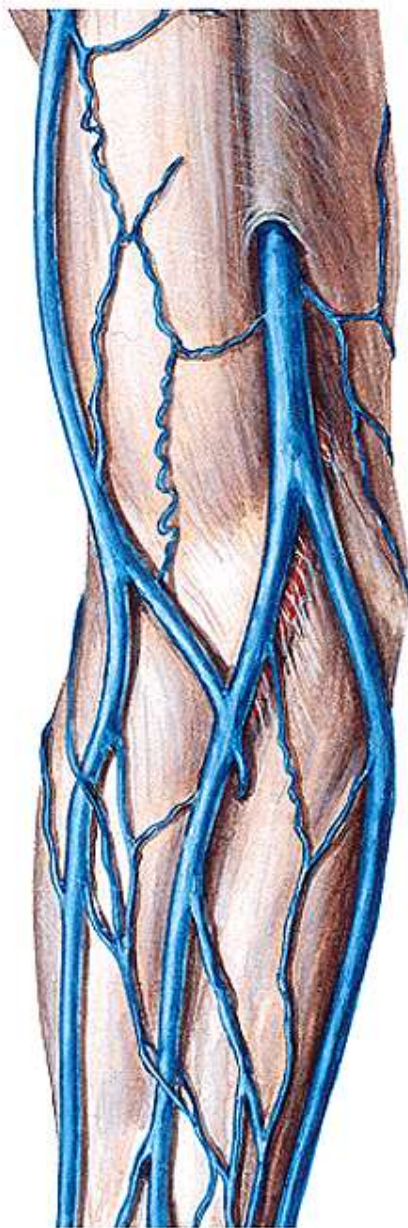
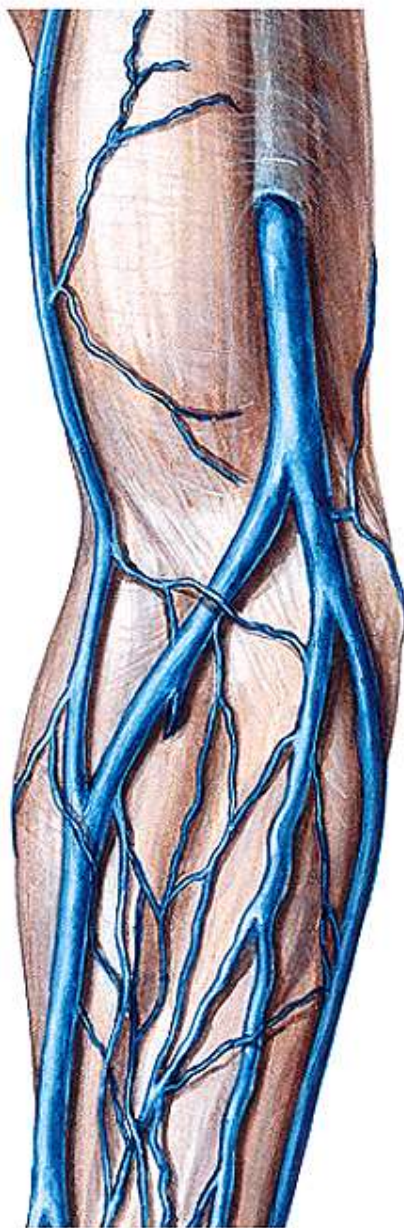


Note: Arrows indicate direction of drainage.

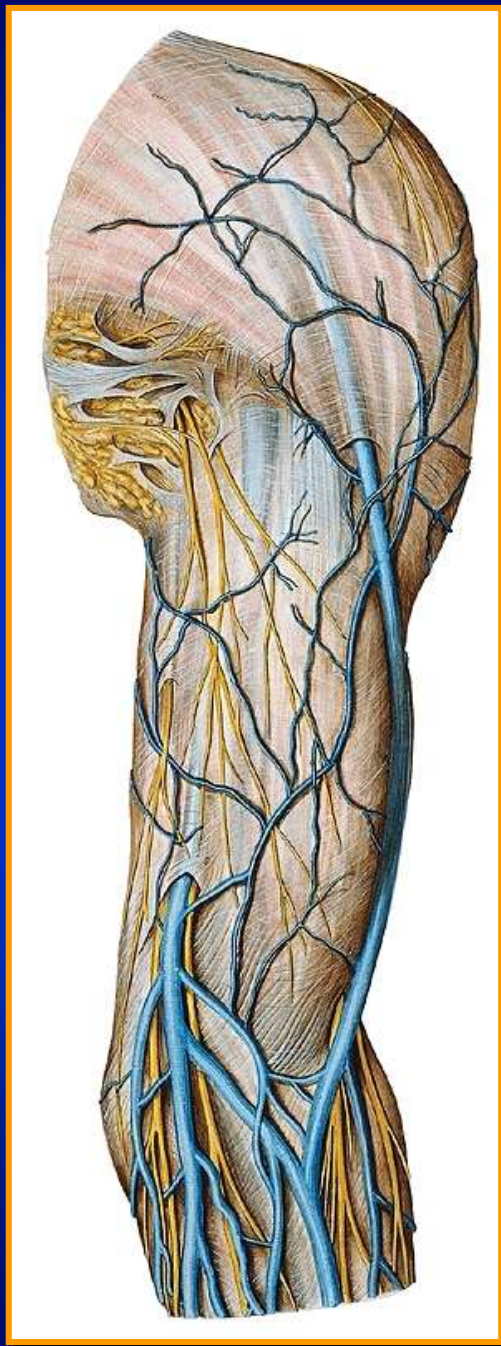




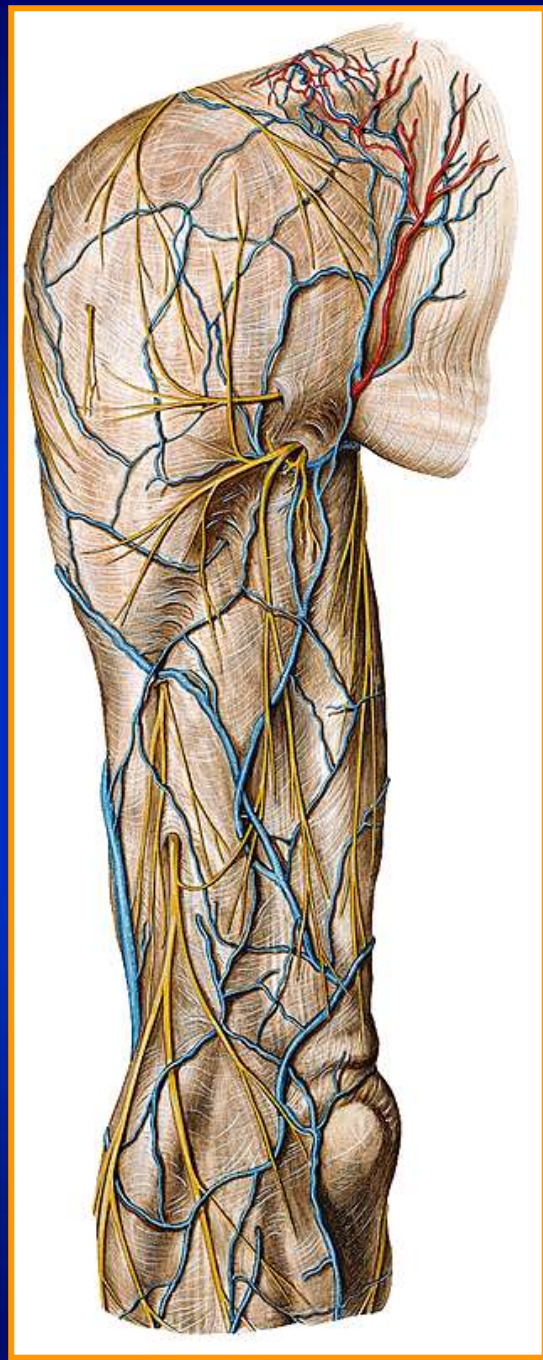


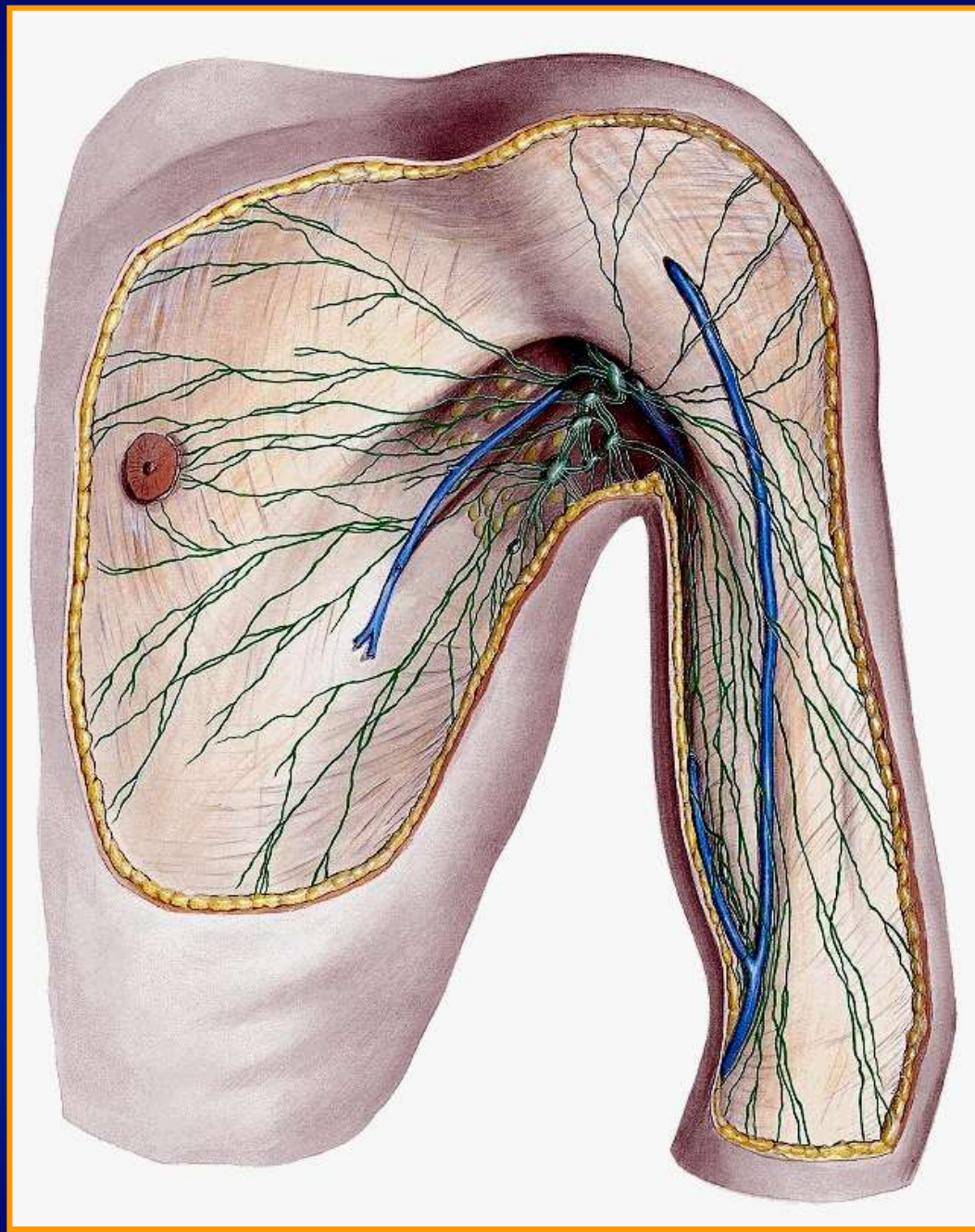




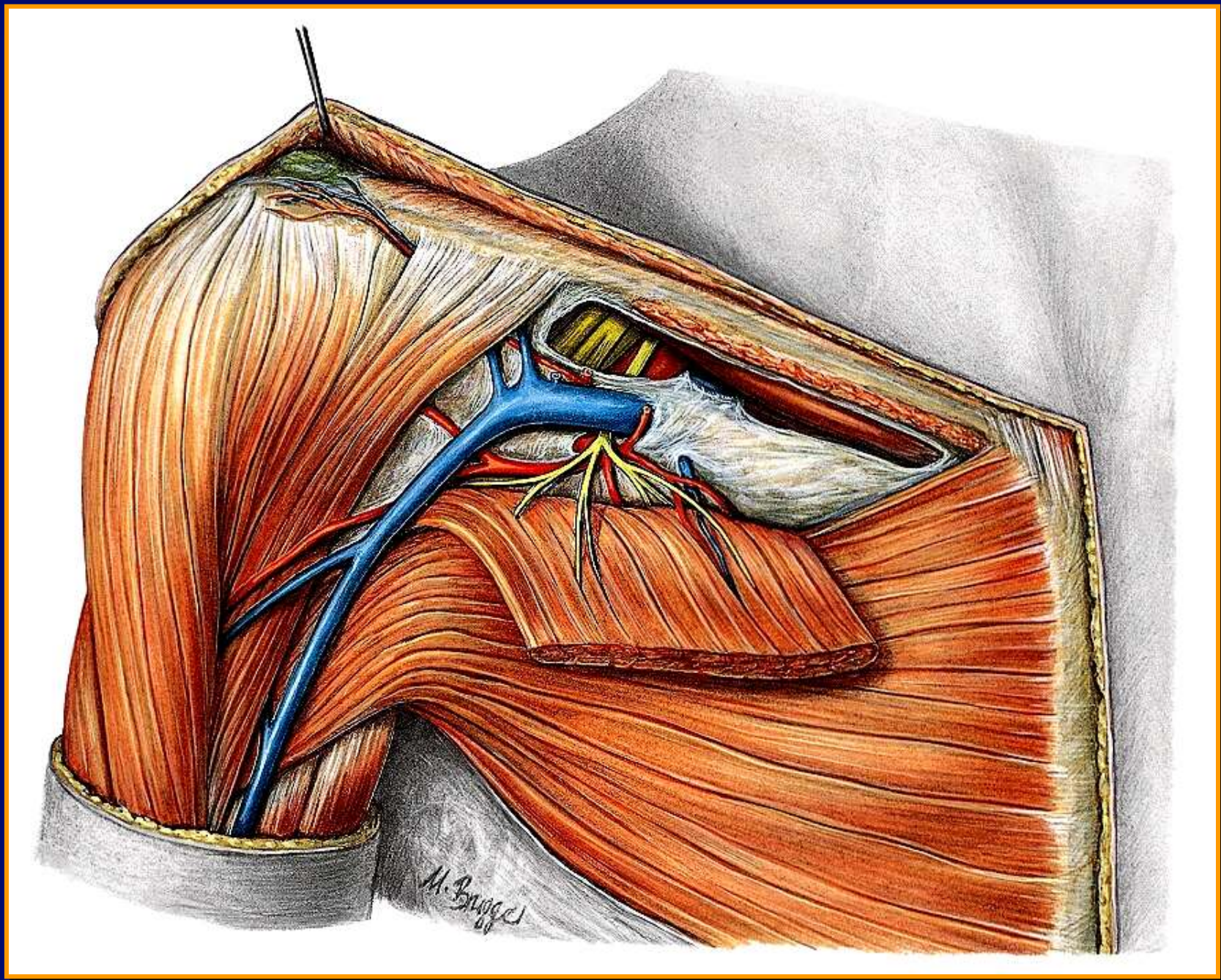








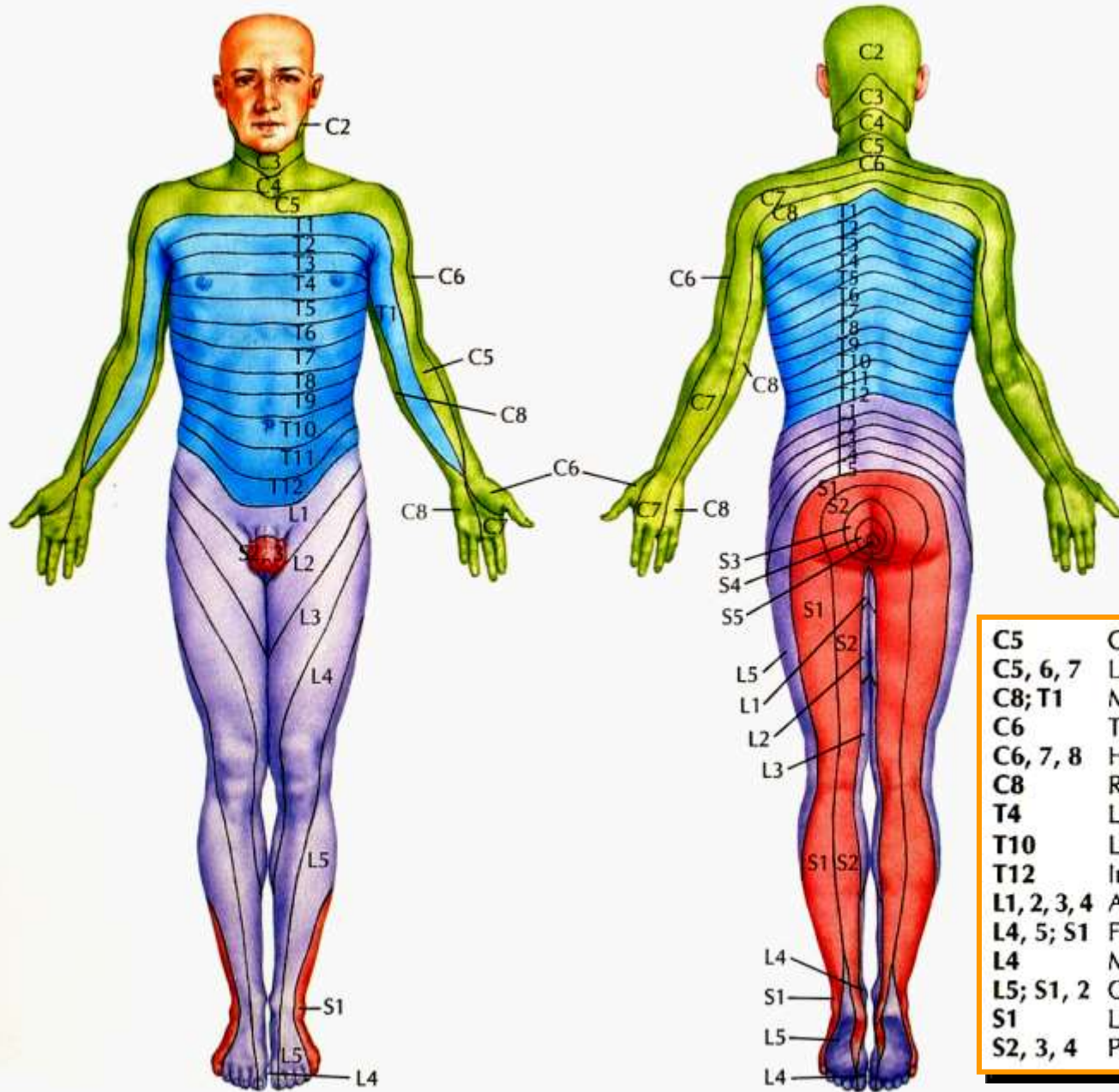






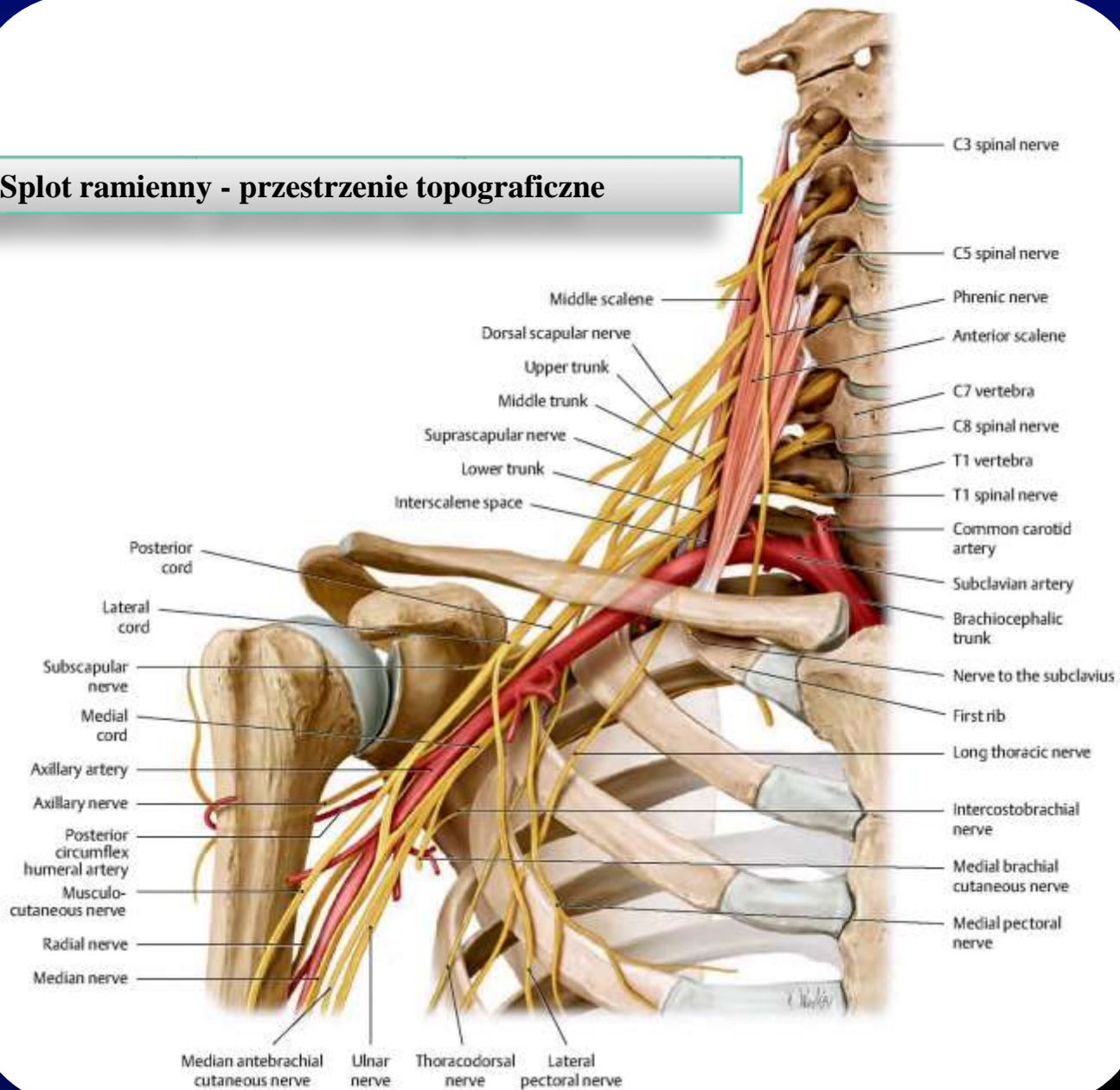
# Struktury układu nerwowego kończyny górnej

Dr. n. med. Jarosław Zawiliński

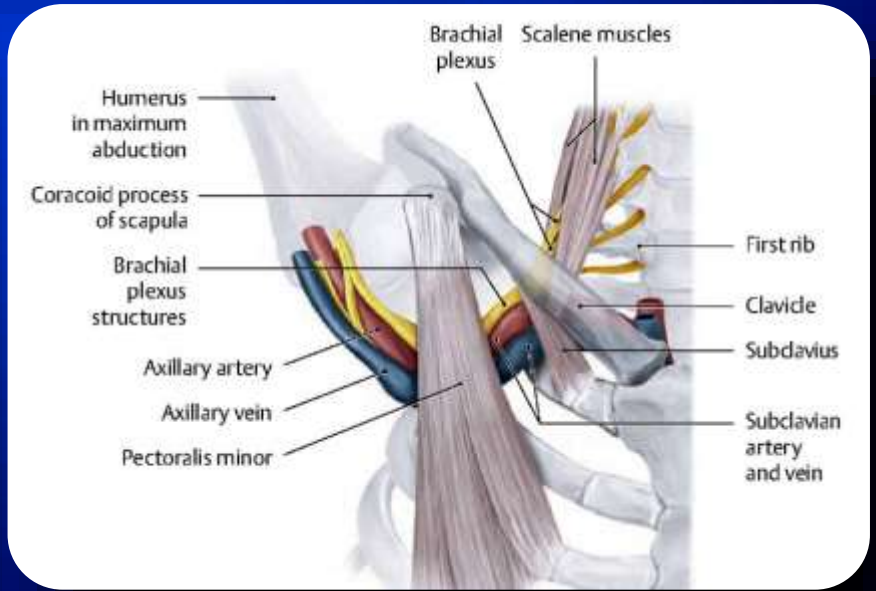
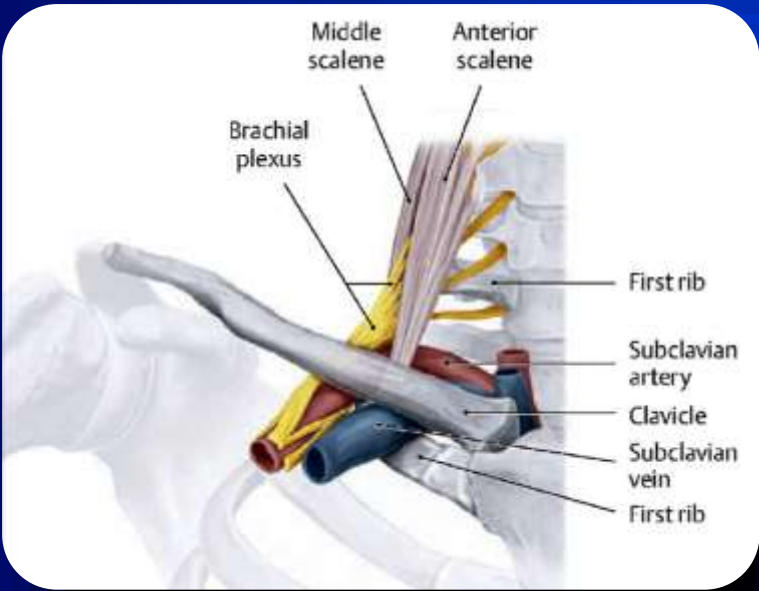
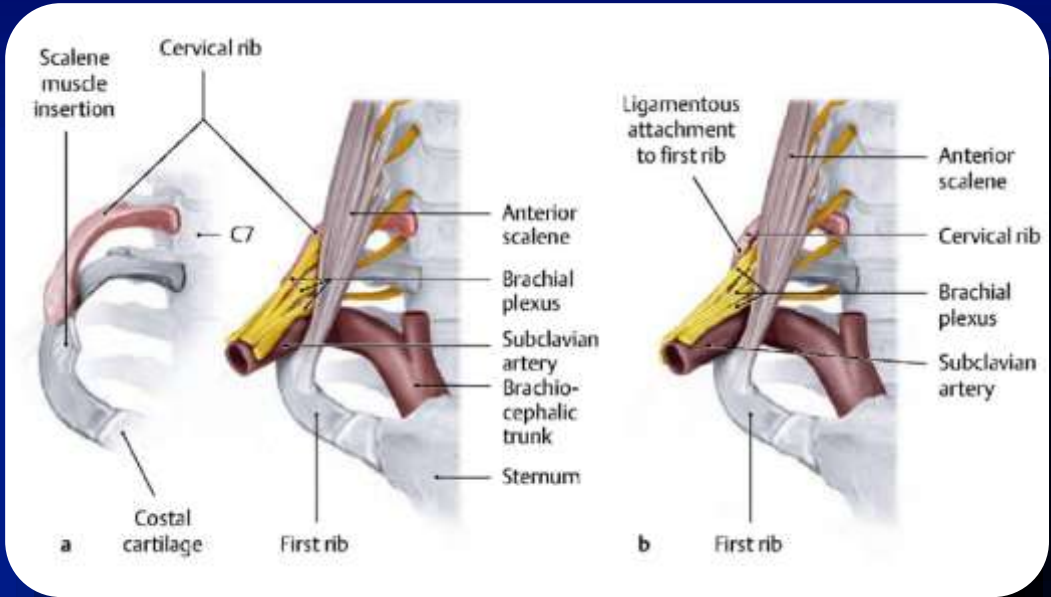


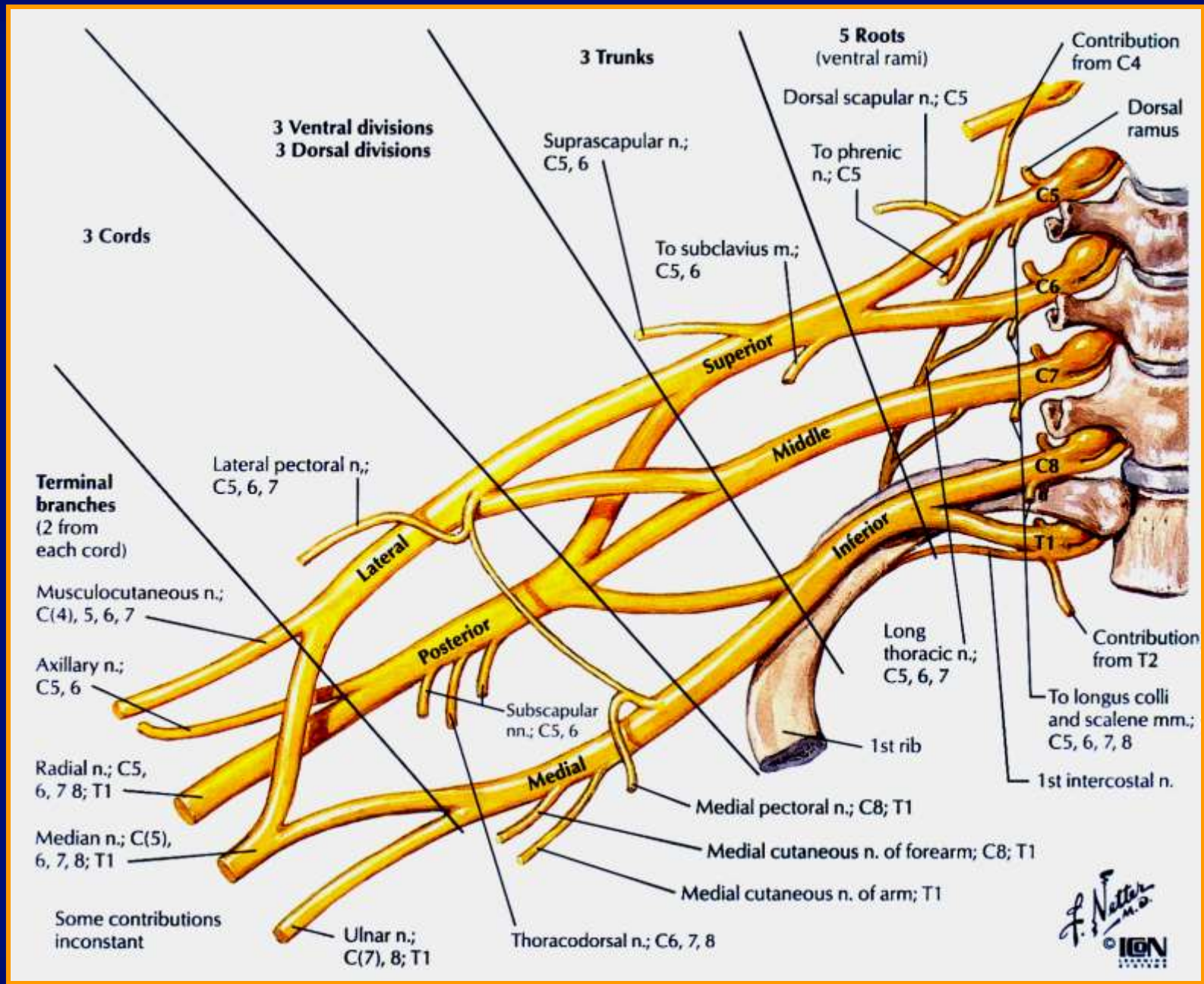
- C5** Clavicles
- C5, 6, 7** Lateral parts of upper limbs
- C8; T1** Medial sides of upper limbs
- C6** Thumb
- C6, 7, 8** Hand
- C8** Ring and little fingers
- T4** Level of nipples
- T10** Level of umbilicus
- T12** Inguinal or groin regions
- L1, 2, 3, 4** Anterior and inner surfaces of lower limbs
- L4, 5; S1** Foot
- L4** Medial side of great toe
- L5; S1, 2** Outer and posterior sides of lower limbs
- S1** Lateral margin of foot and little toe
- S2, 3, 4** Perineum

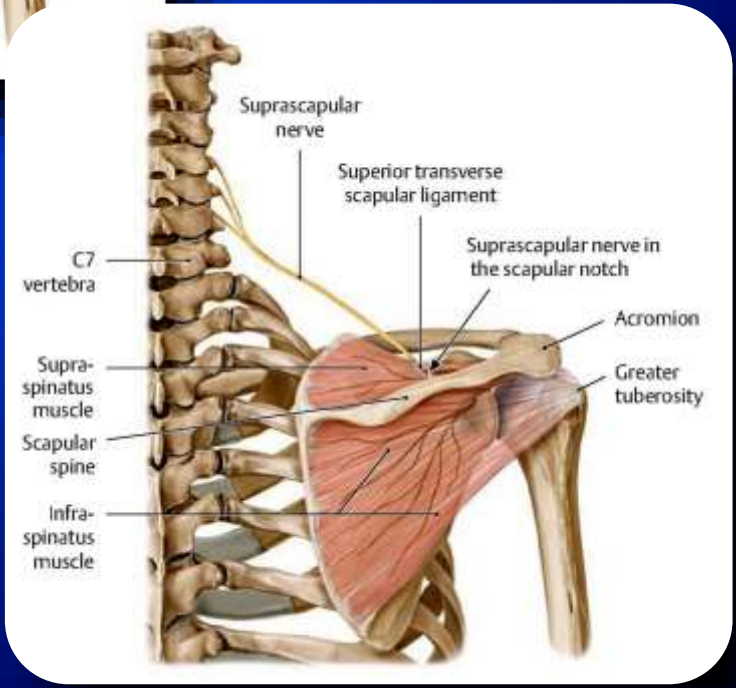
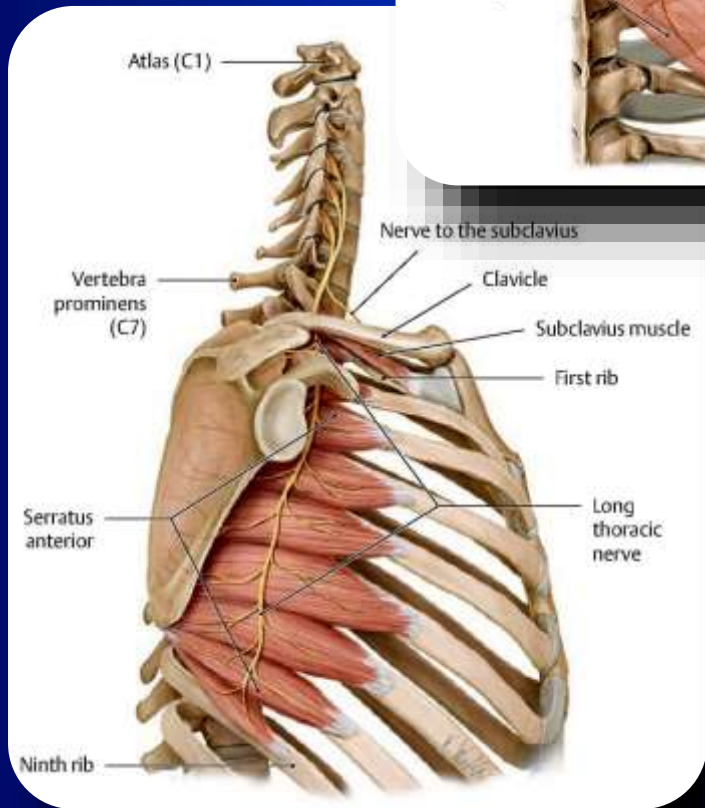
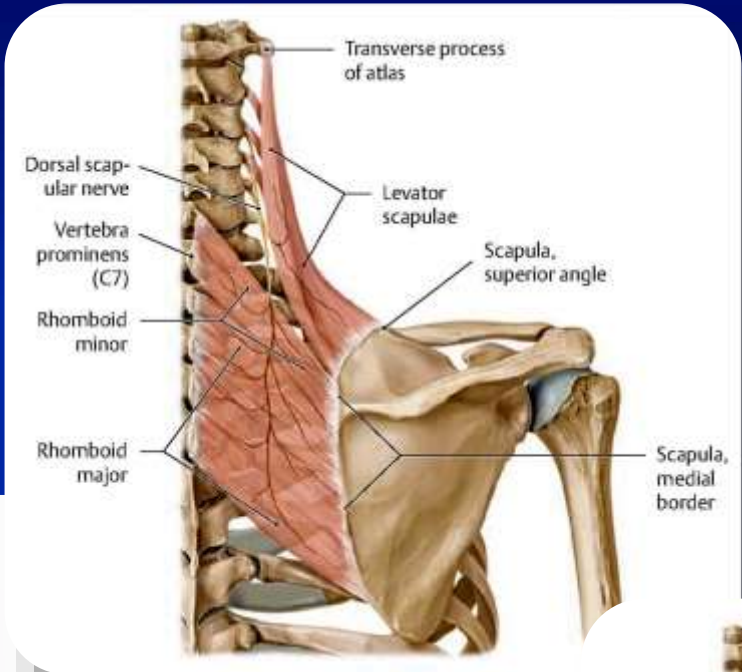
## Spłot ramienny - przestrzenie topograficzne



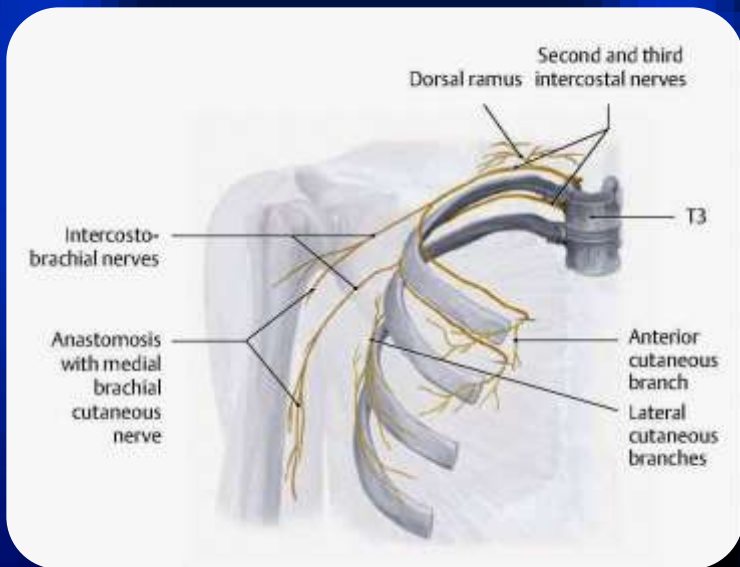
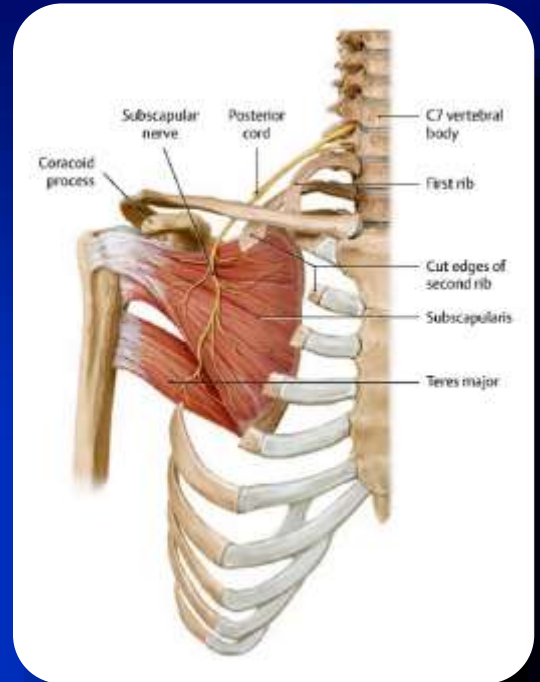
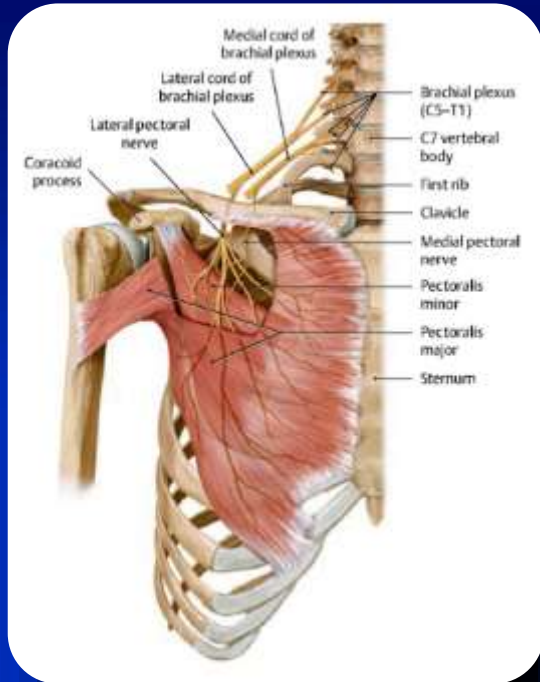
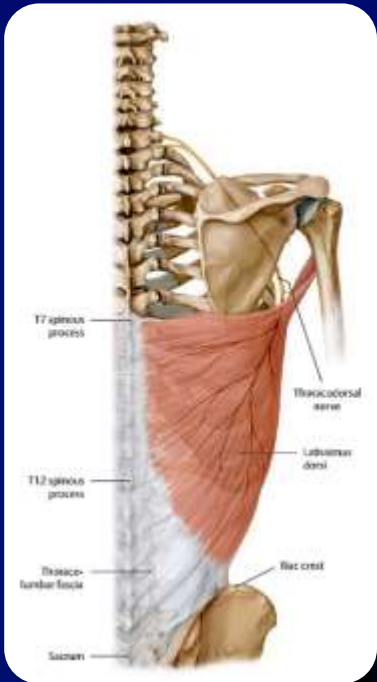


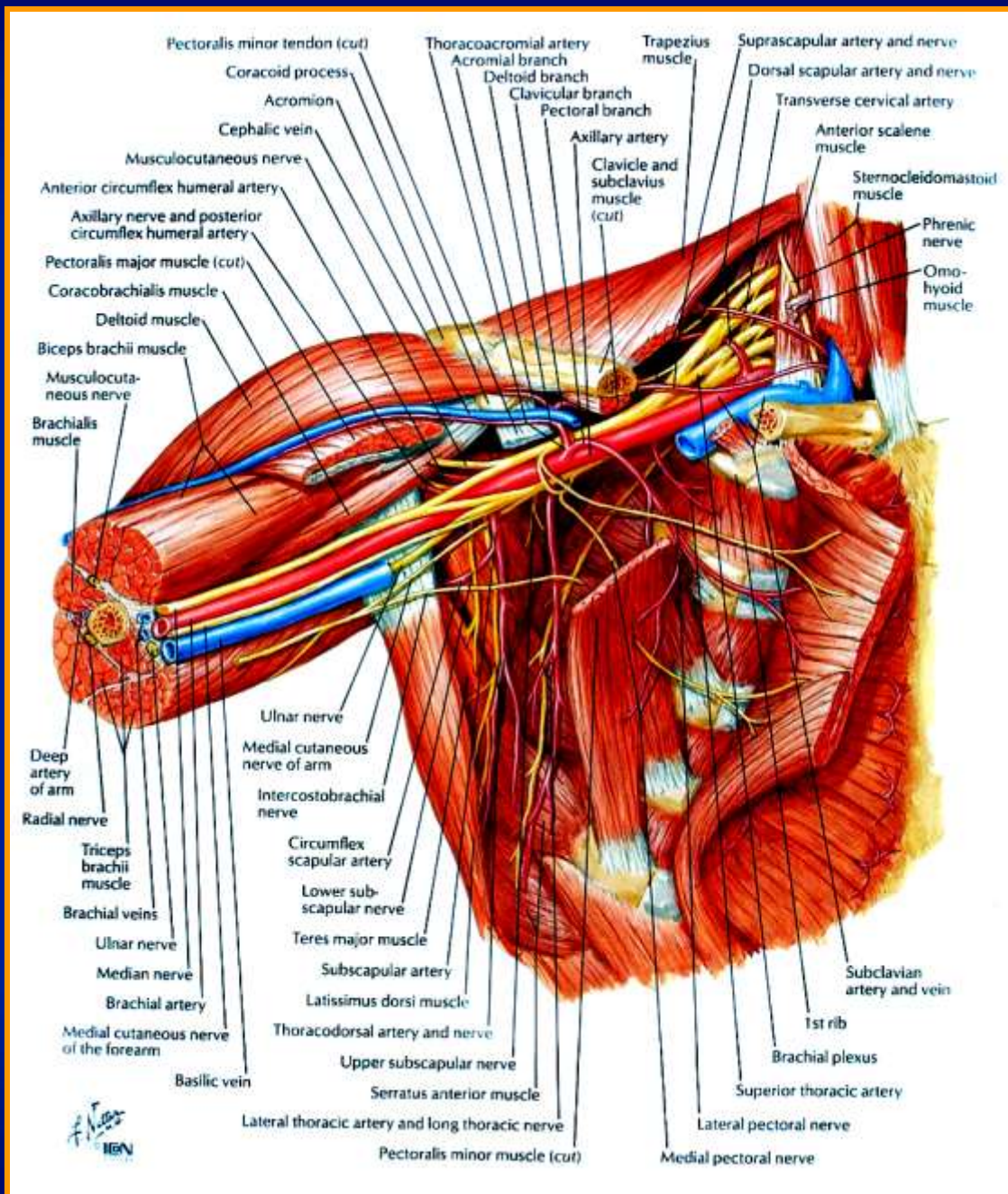


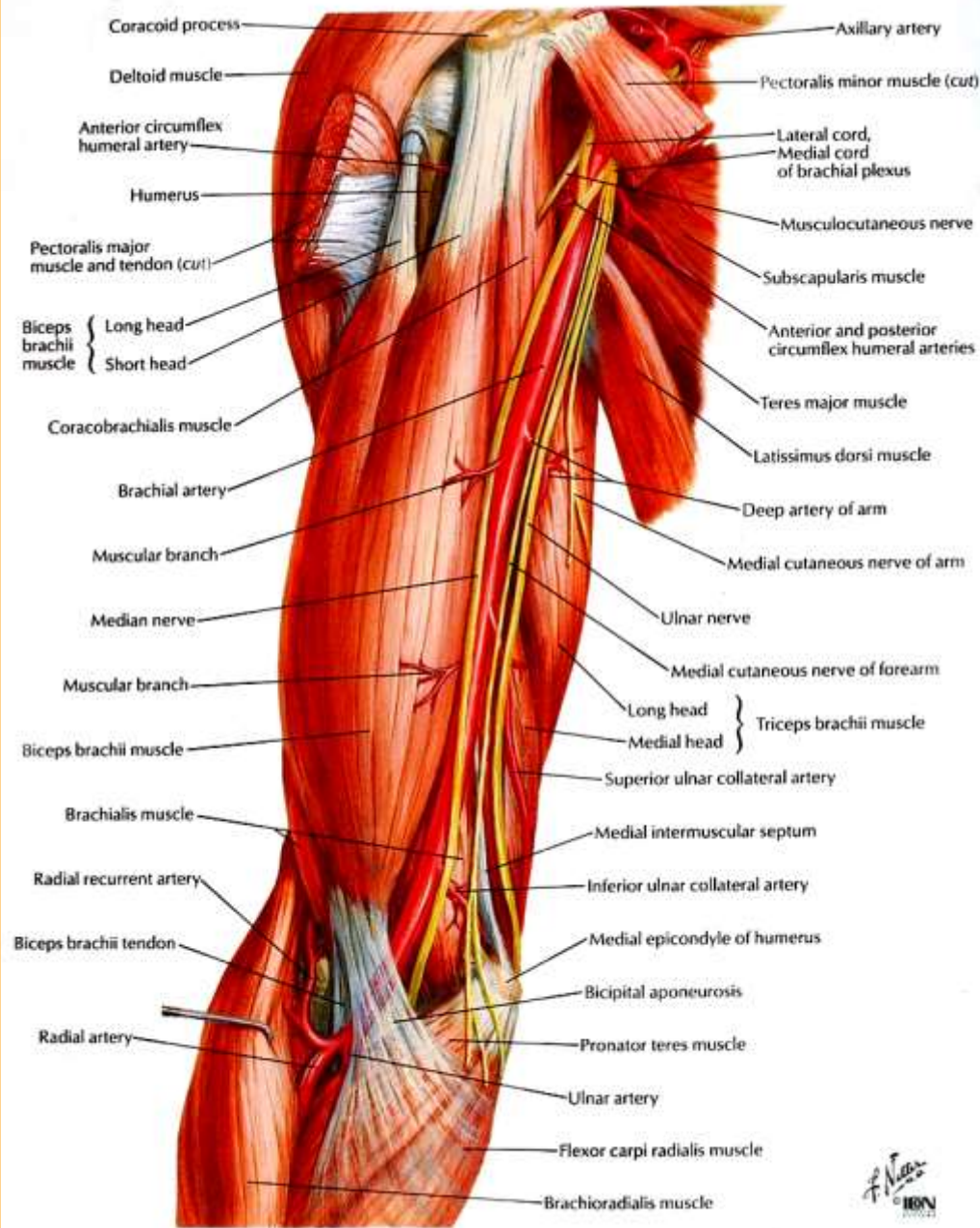










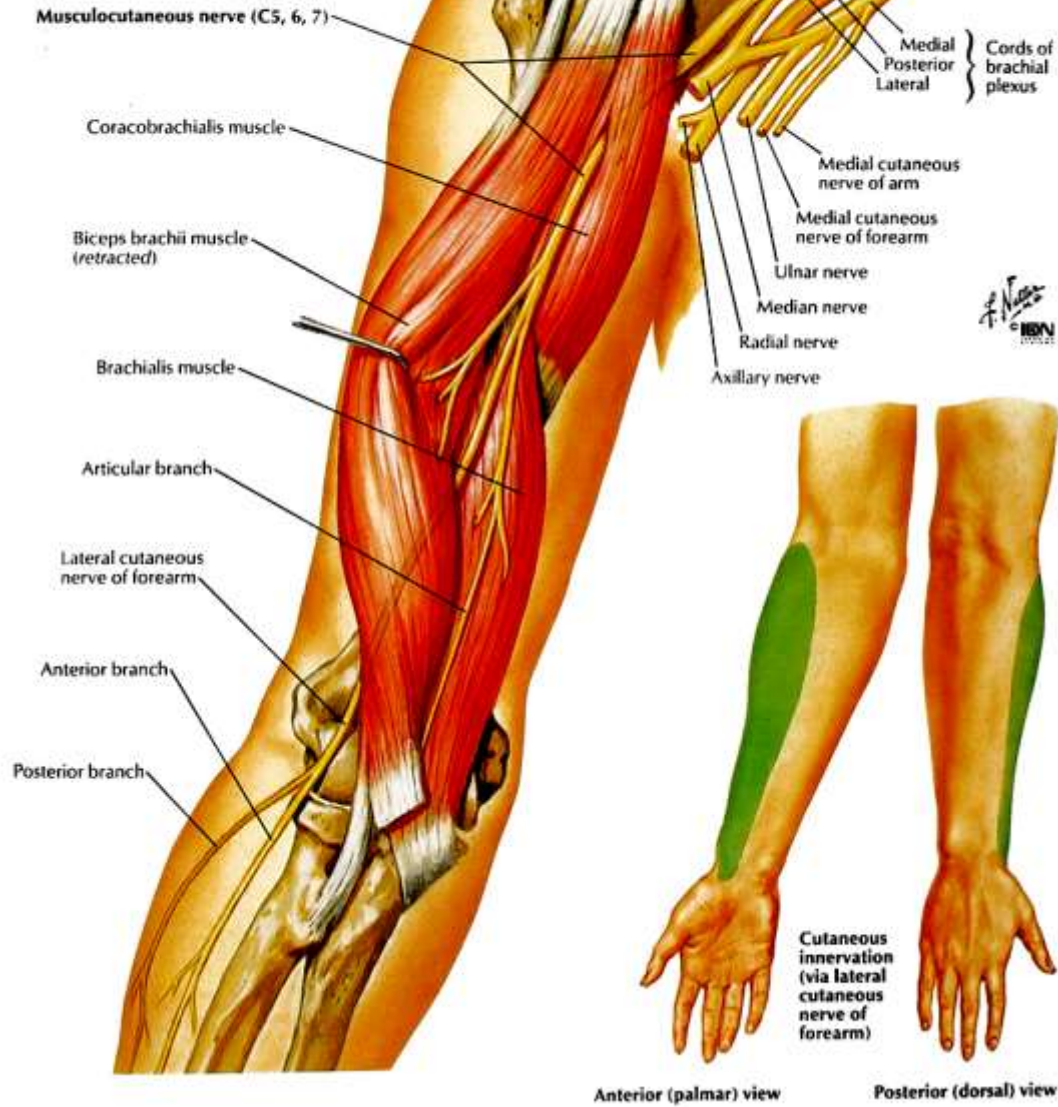


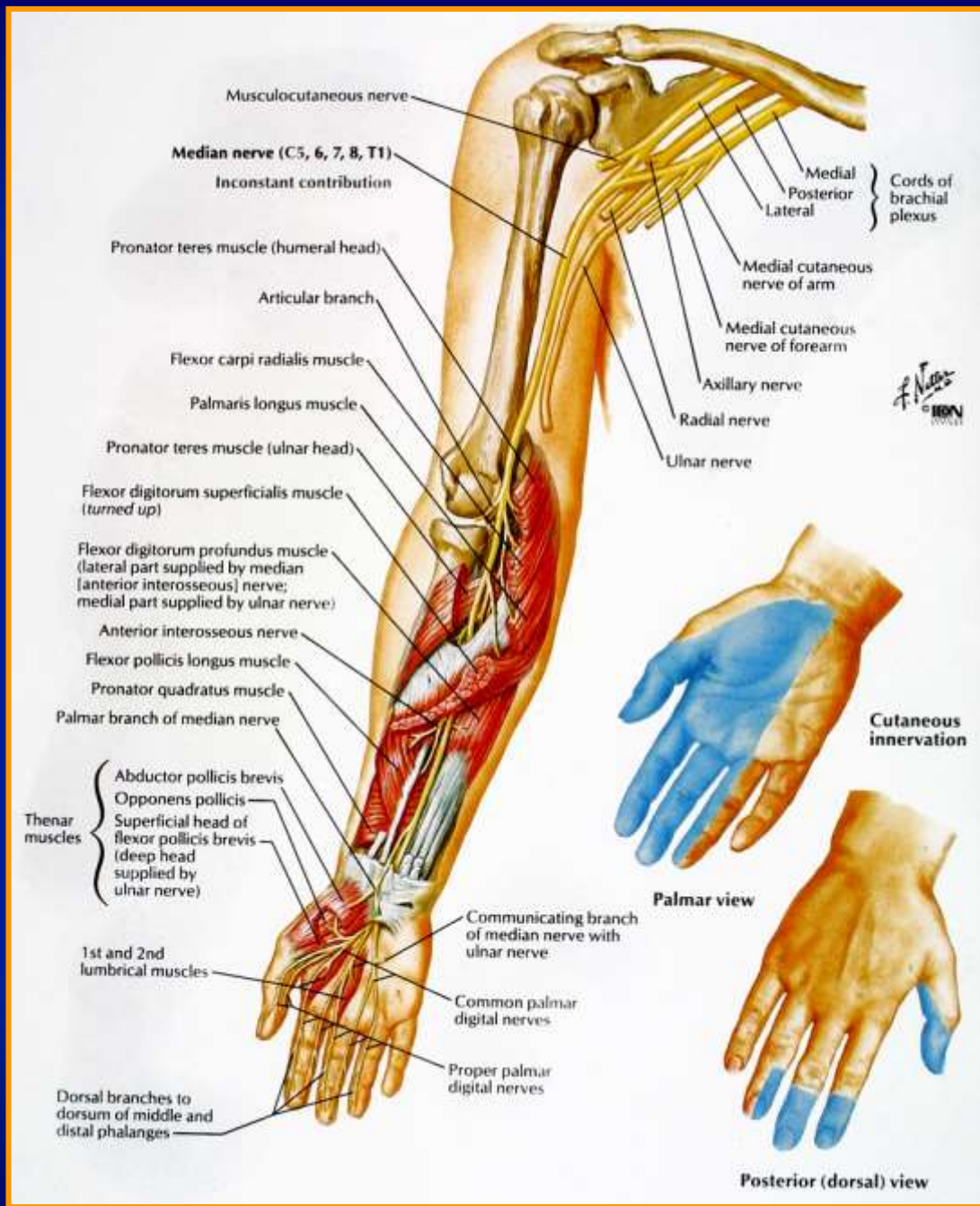
F. Netter  
 © IBN  
 2002

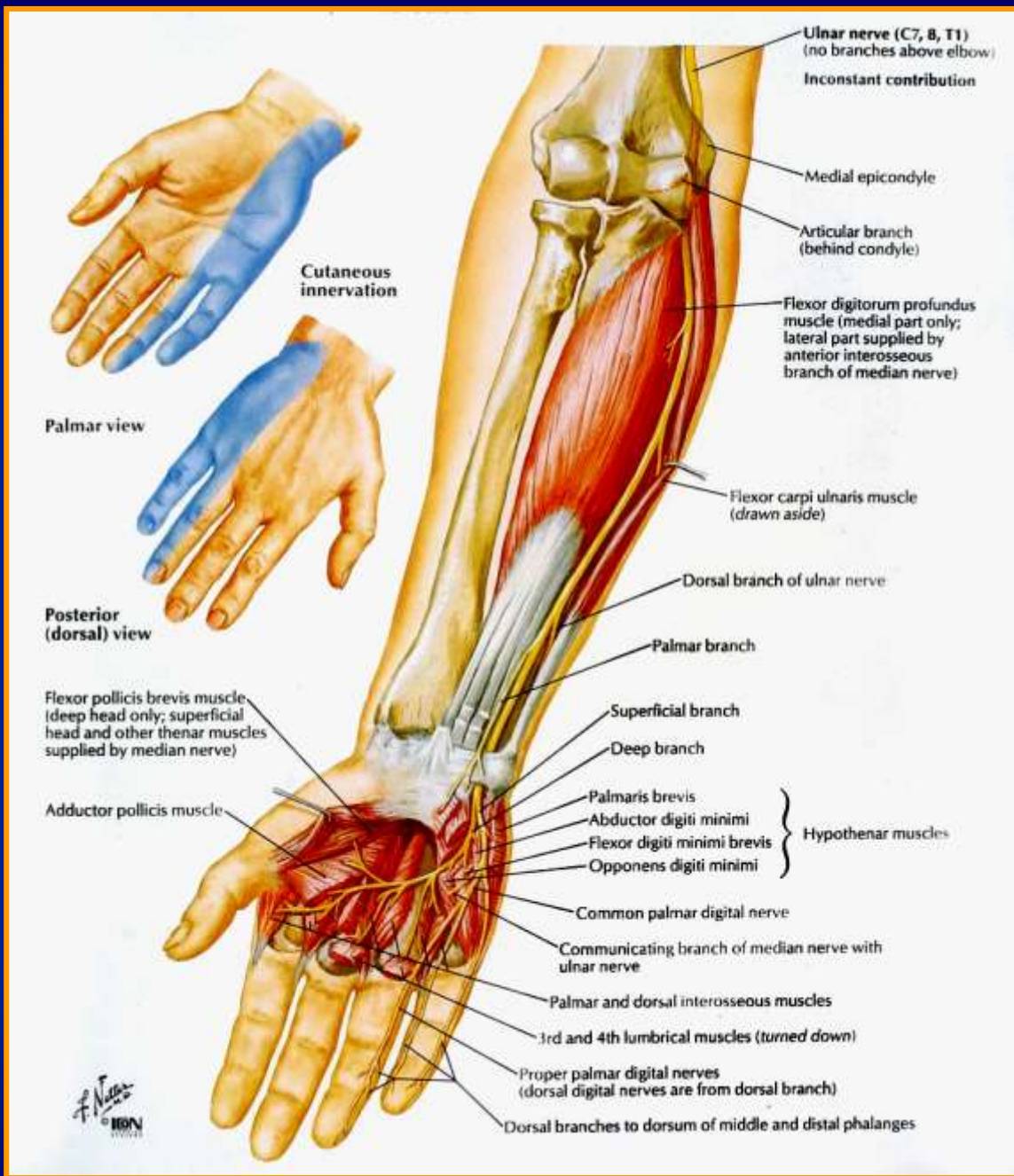


**Anterior view**

Note: Only muscles innervated by musculocutaneous nerve shown







Ulnar nerve (C7, 8, T1)  
(no branches above elbow)  
Inconstant contribution

Medial epicondyle

Articular branch  
(behind condyle)

Flexor digitorum profundus  
muscle (medial part only;  
lateral part supplied by  
anterior interosseous  
branch of median nerve)

Flexor carpi ulnaris muscle  
(drawn aside)

Dorsal branch of ulnar nerve

Palmar branch

Superficial branch

Deep branch

Palmaris brevis

Abductor digiti minimi

Flexor digiti minimi brevis

Opponens digiti minimi

Hypothenar muscles

Common palmar digital nerve

Communicating branch of median nerve with  
ulnar nerve

Palmar and dorsal interosseous muscles

3rd and 4th lumbrical muscles (turned down)

Proper palmar digital nerves  
(dorsal digital nerves are from dorsal branch)

Dorsal branches to dorsum of middle and distal phalanges

Cutaneous innervation

Palmar view

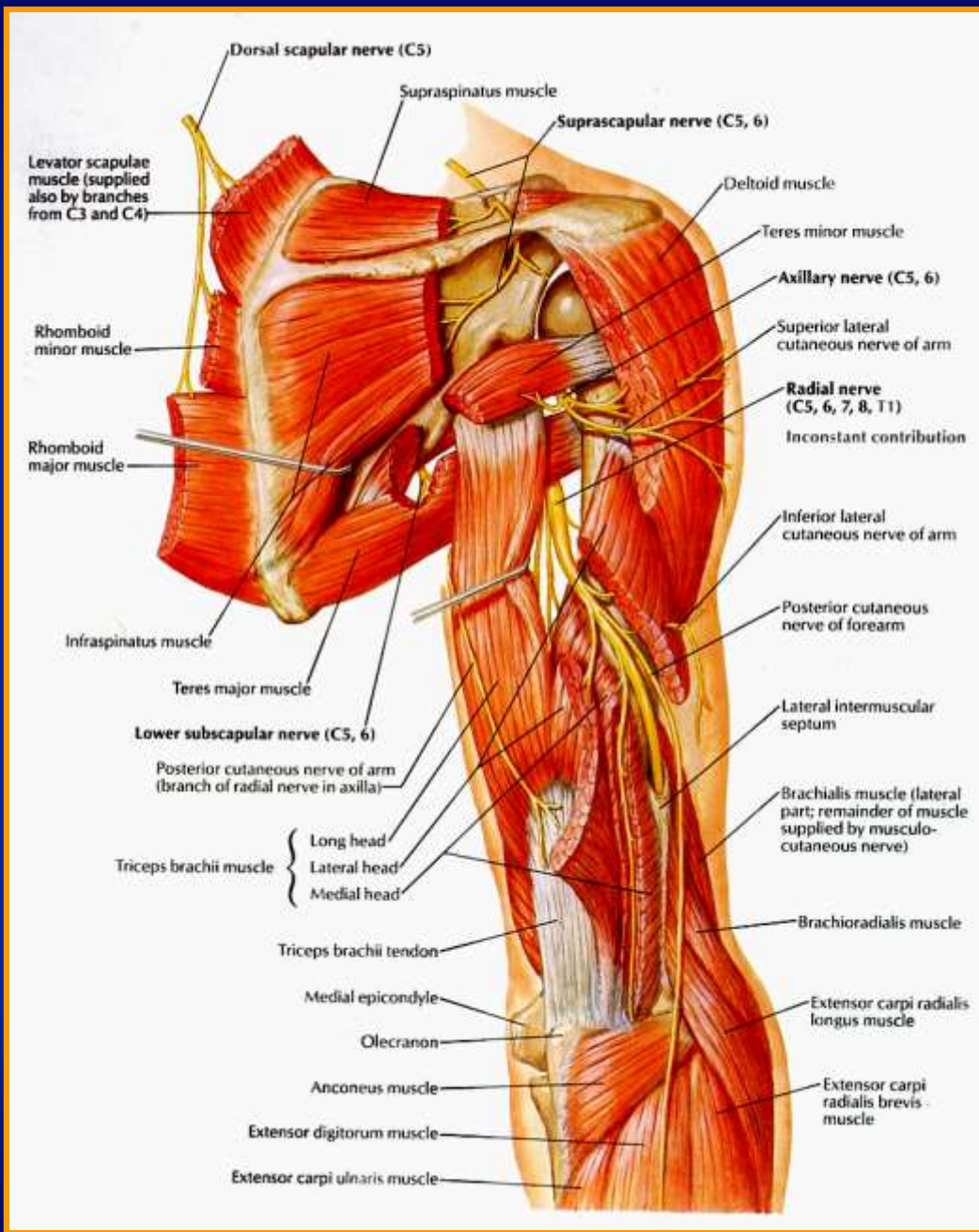
Posterior  
(dorsal) view

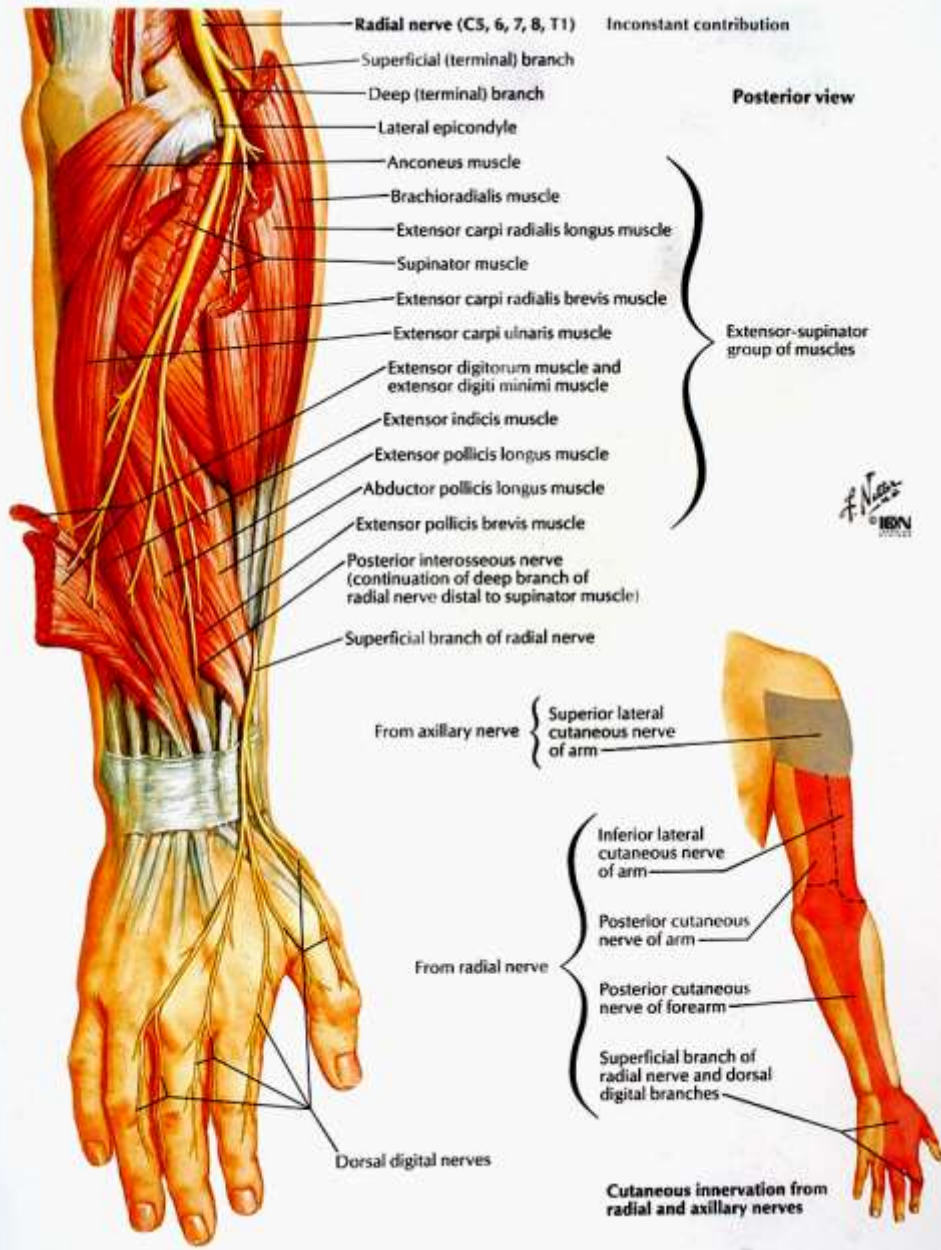
Flexor pollicis brevis muscle  
(deep head only; superficial  
head and other thenar muscles  
supplied by median nerve)

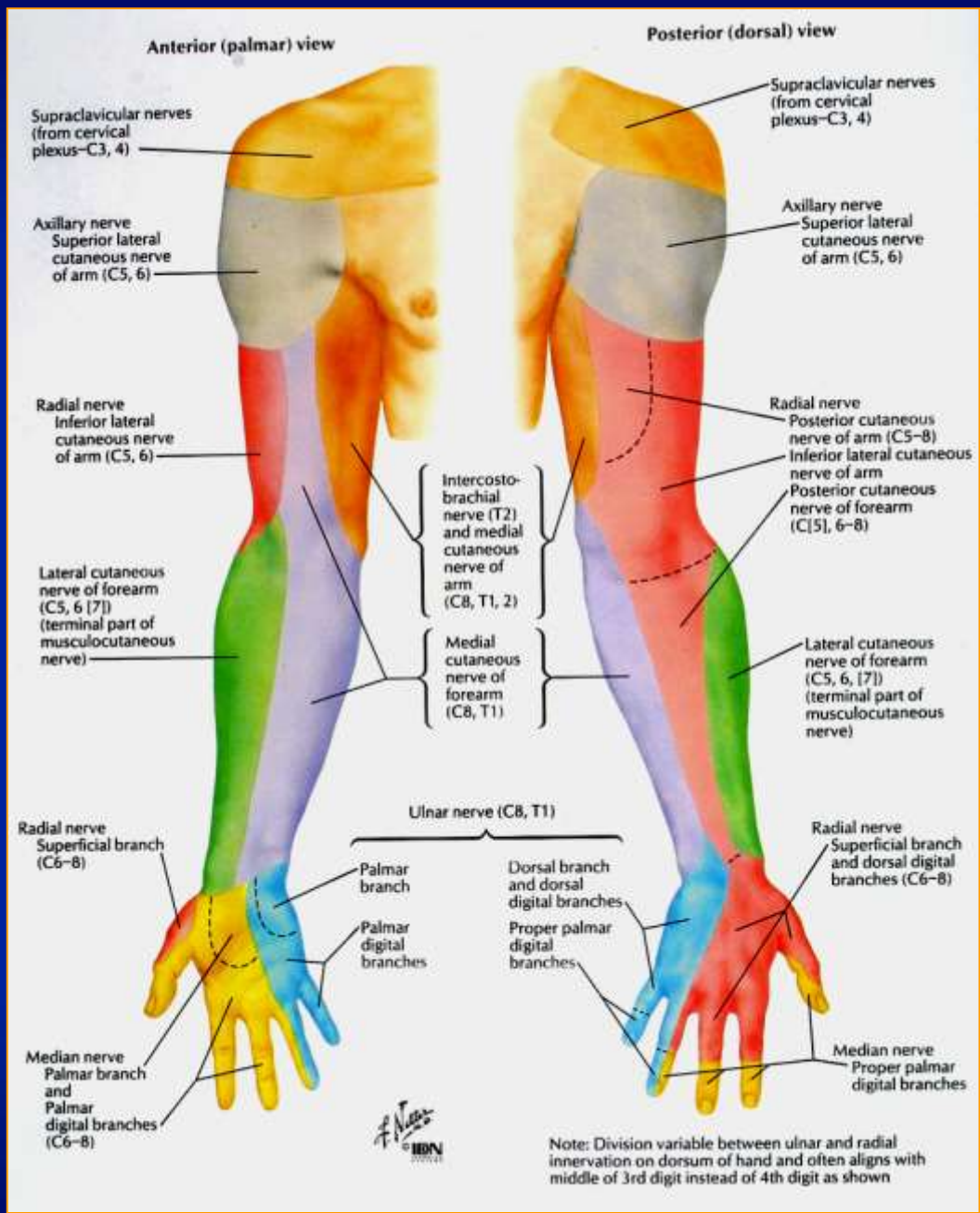
Adductor pollicis muscle





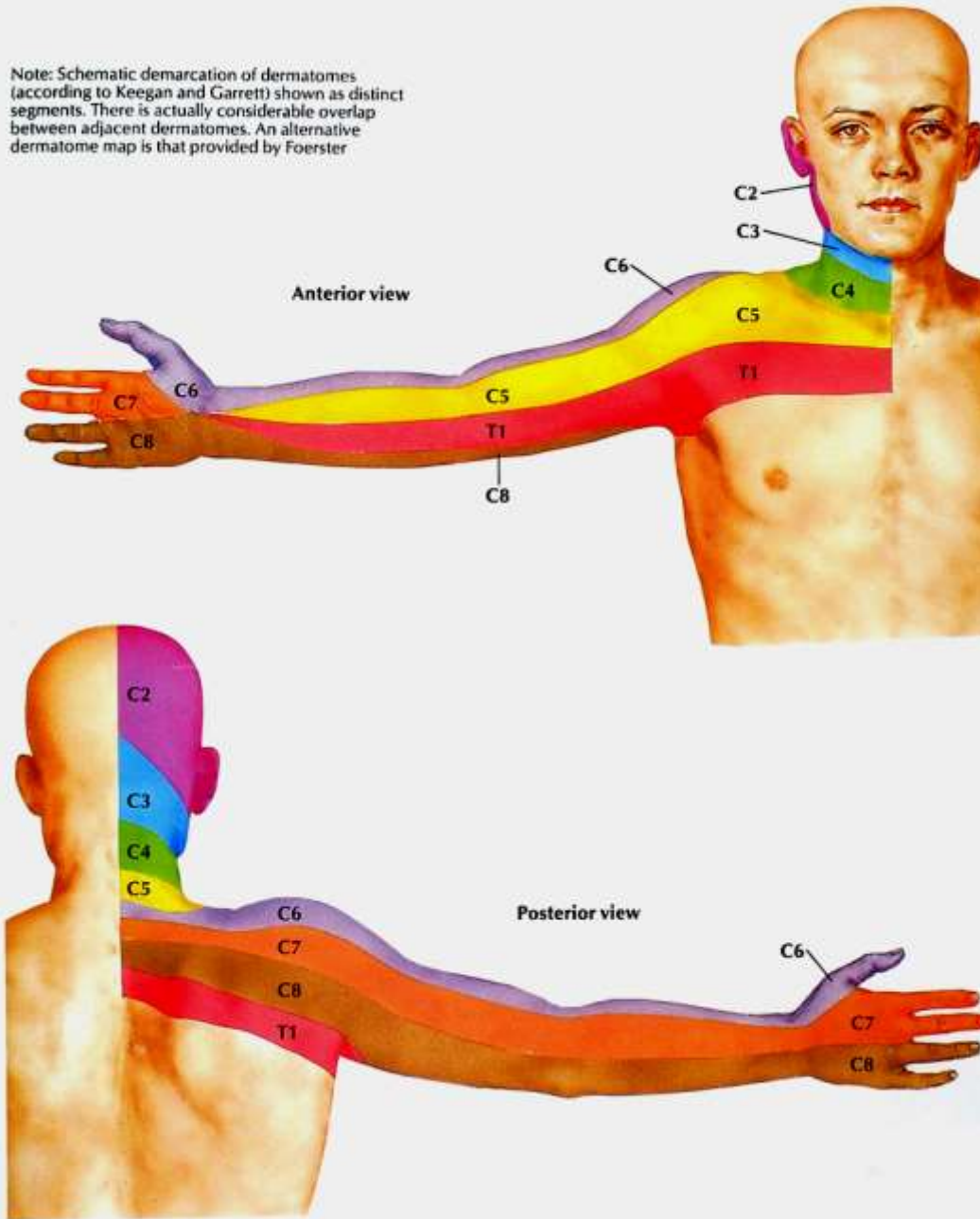


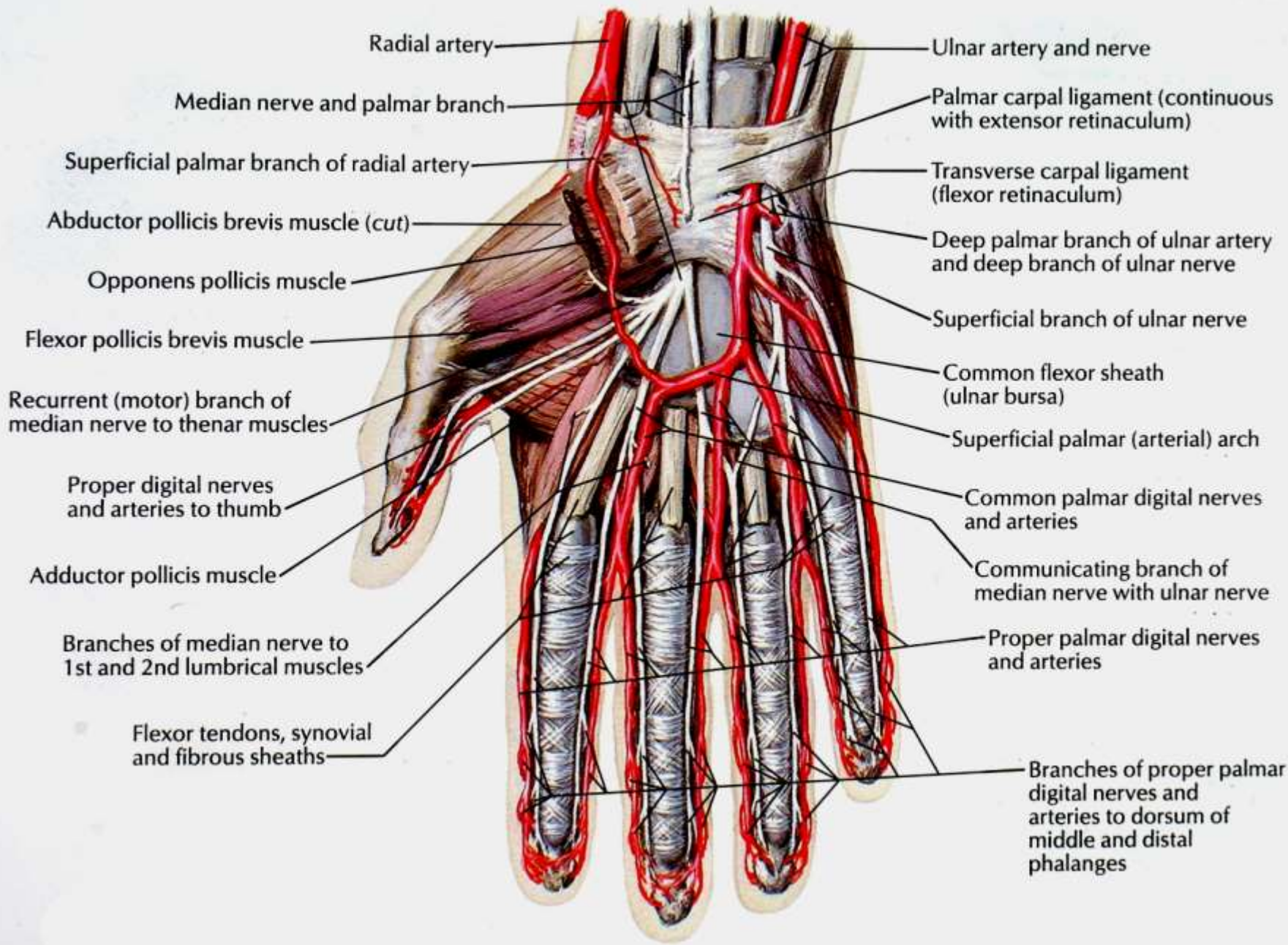




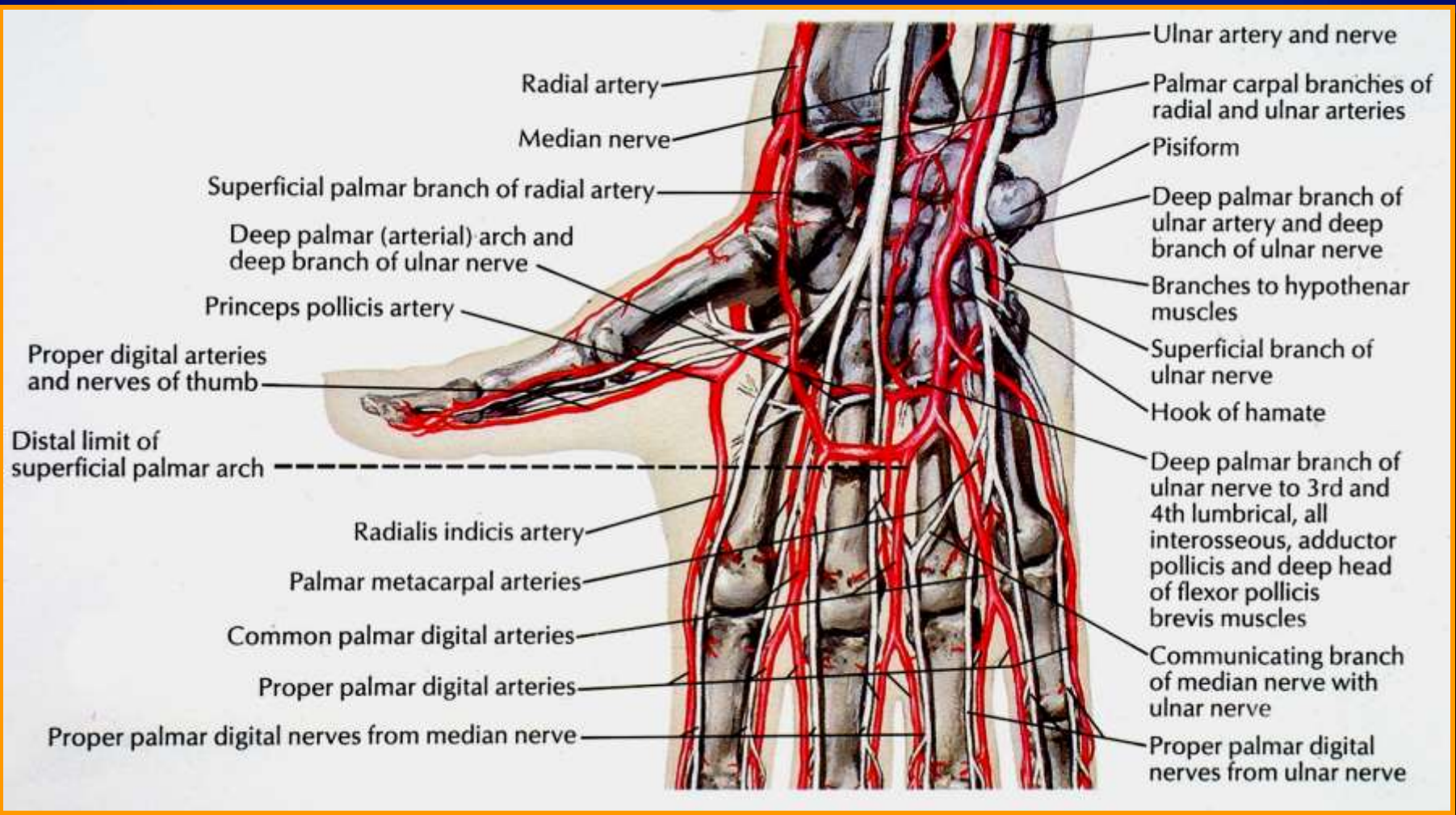


Note: Schematic demarcation of dermatomes (according to Keegan and Garrett) shown as distinct segments. There is actually considerable overlap between adjacent dermatomes. An alternative dermatome map is that provided by Foerster

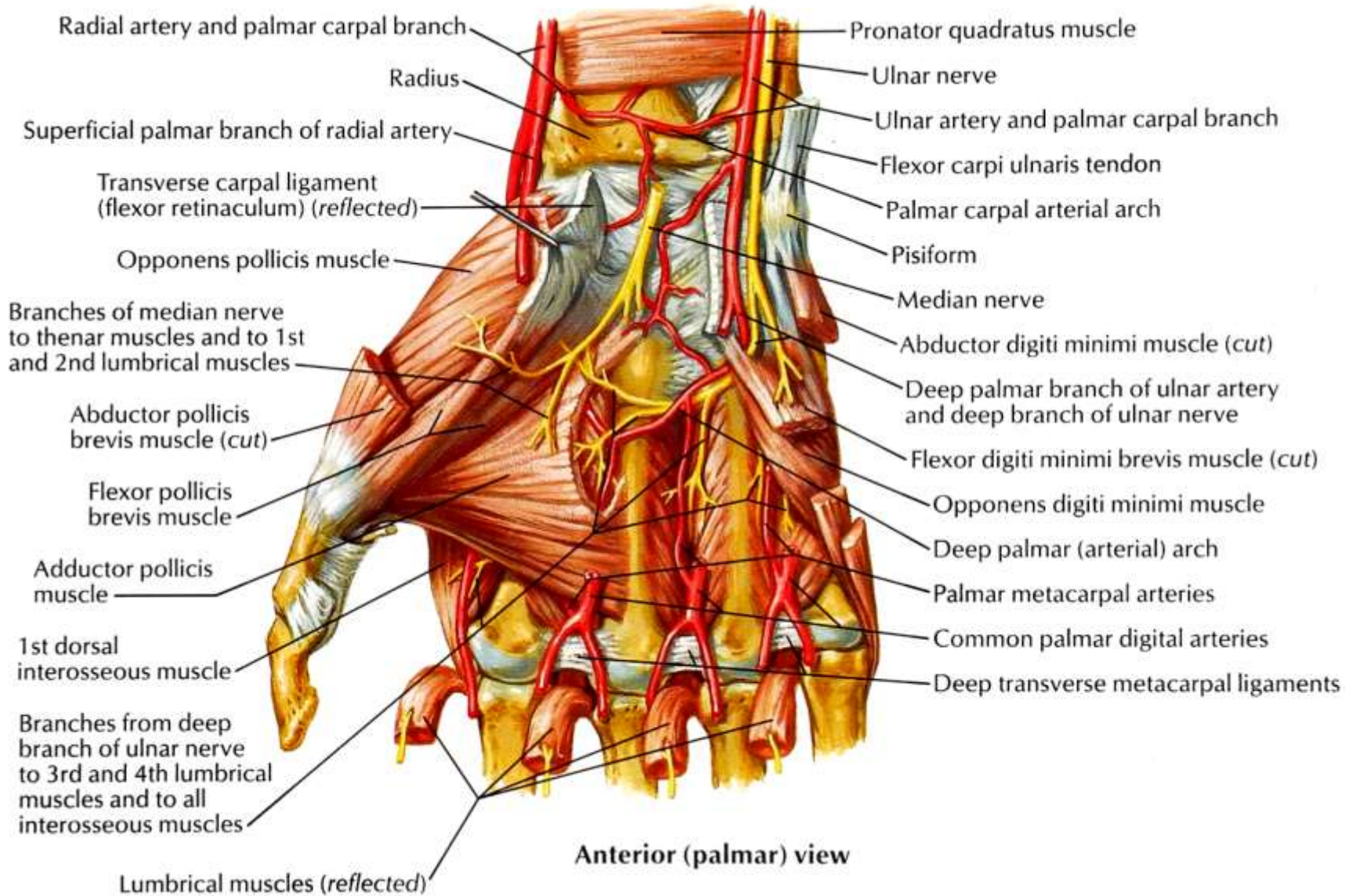




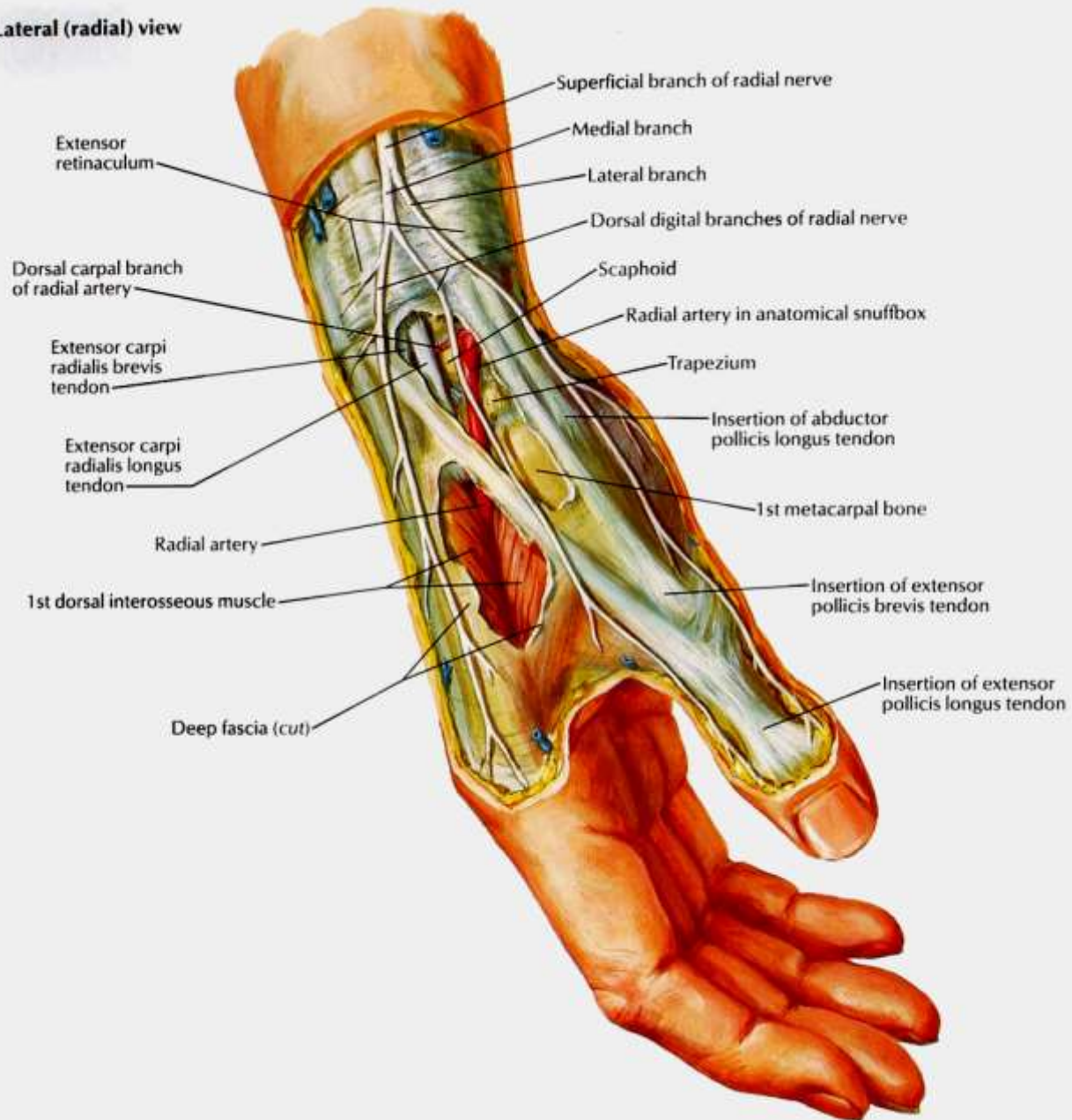






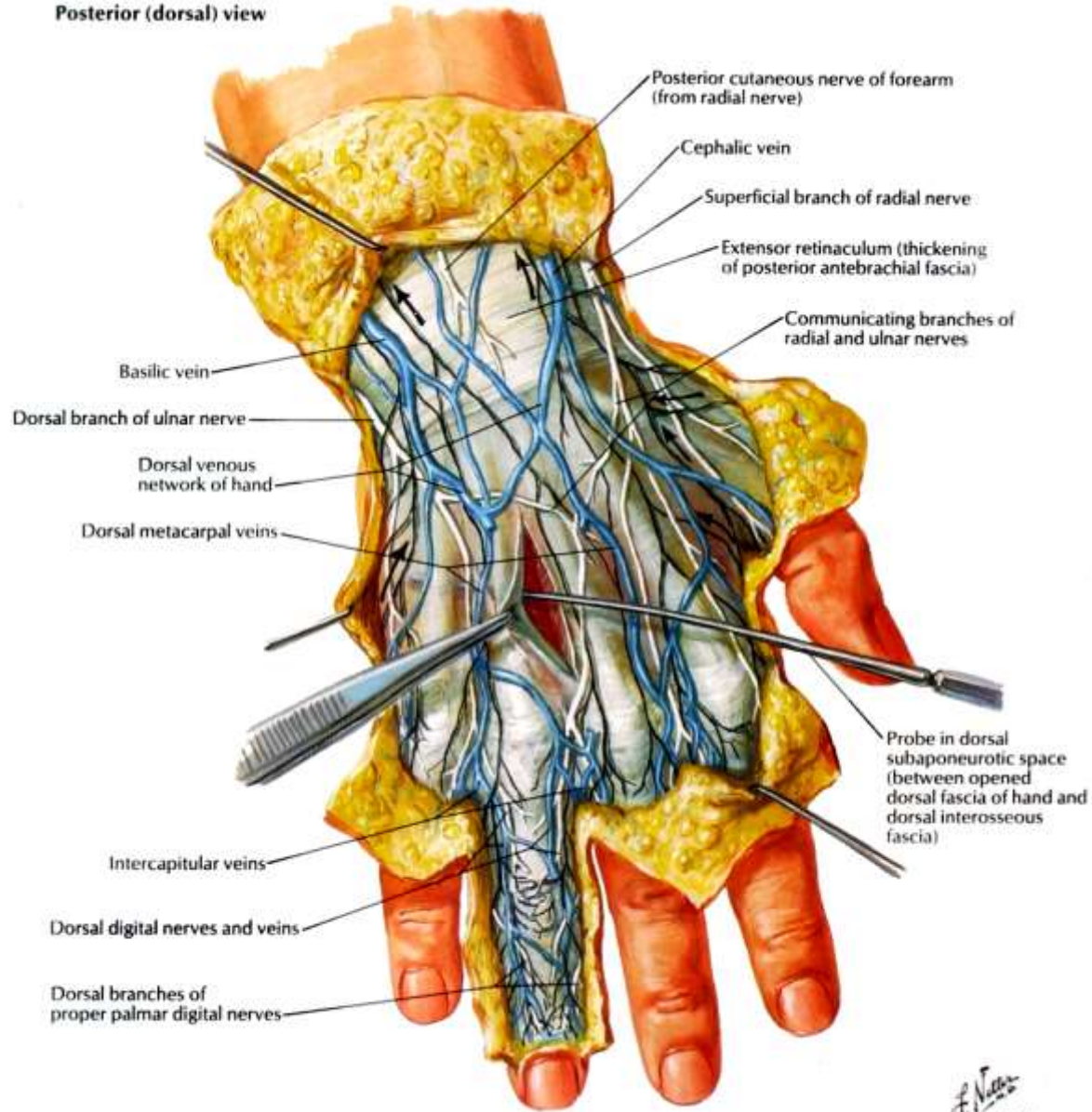


### Lateral (radial) view





Posterior (dorsal) view

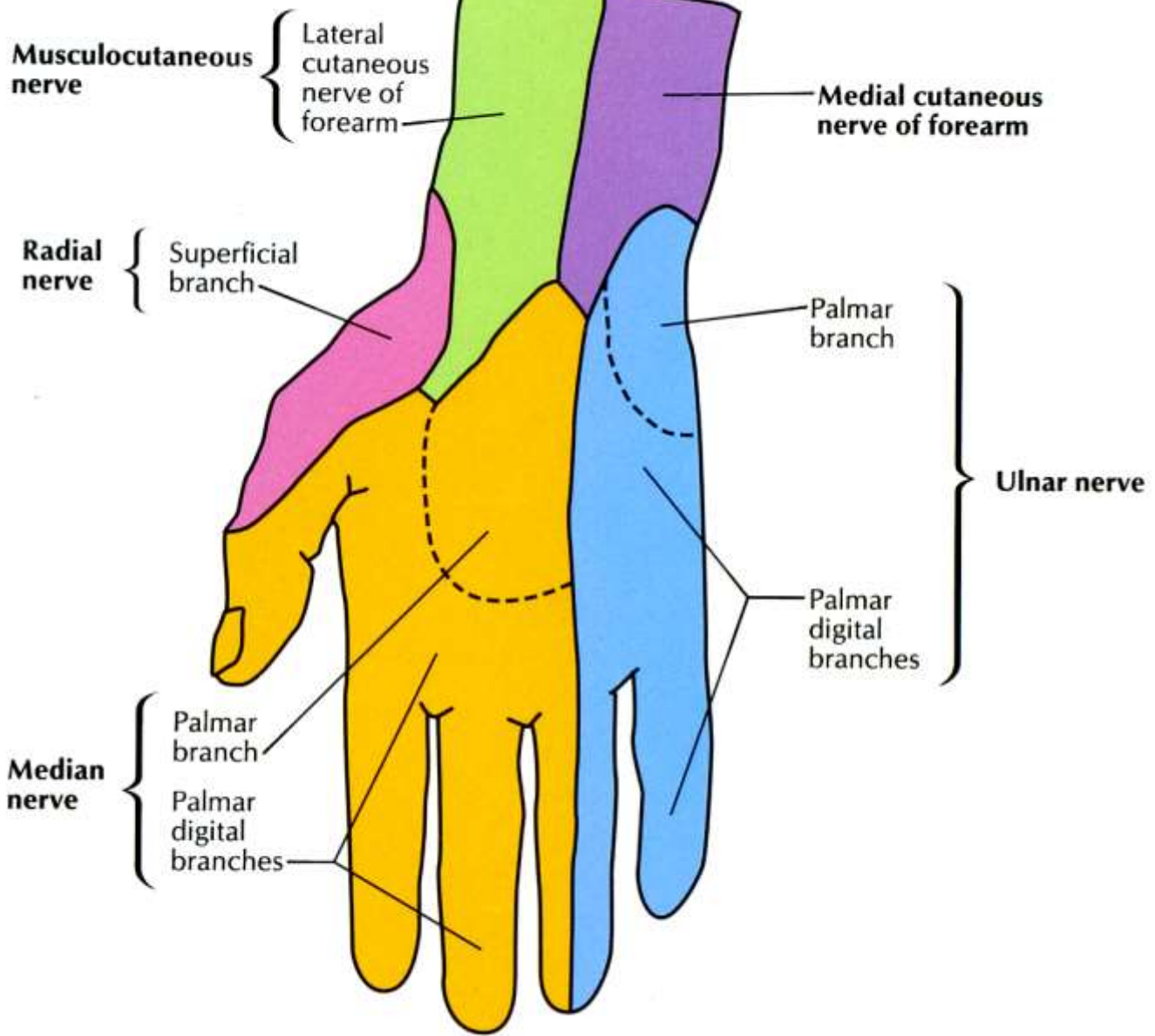


Note: Lymphatic pathways shown in black; arrows indicate direction of drainage

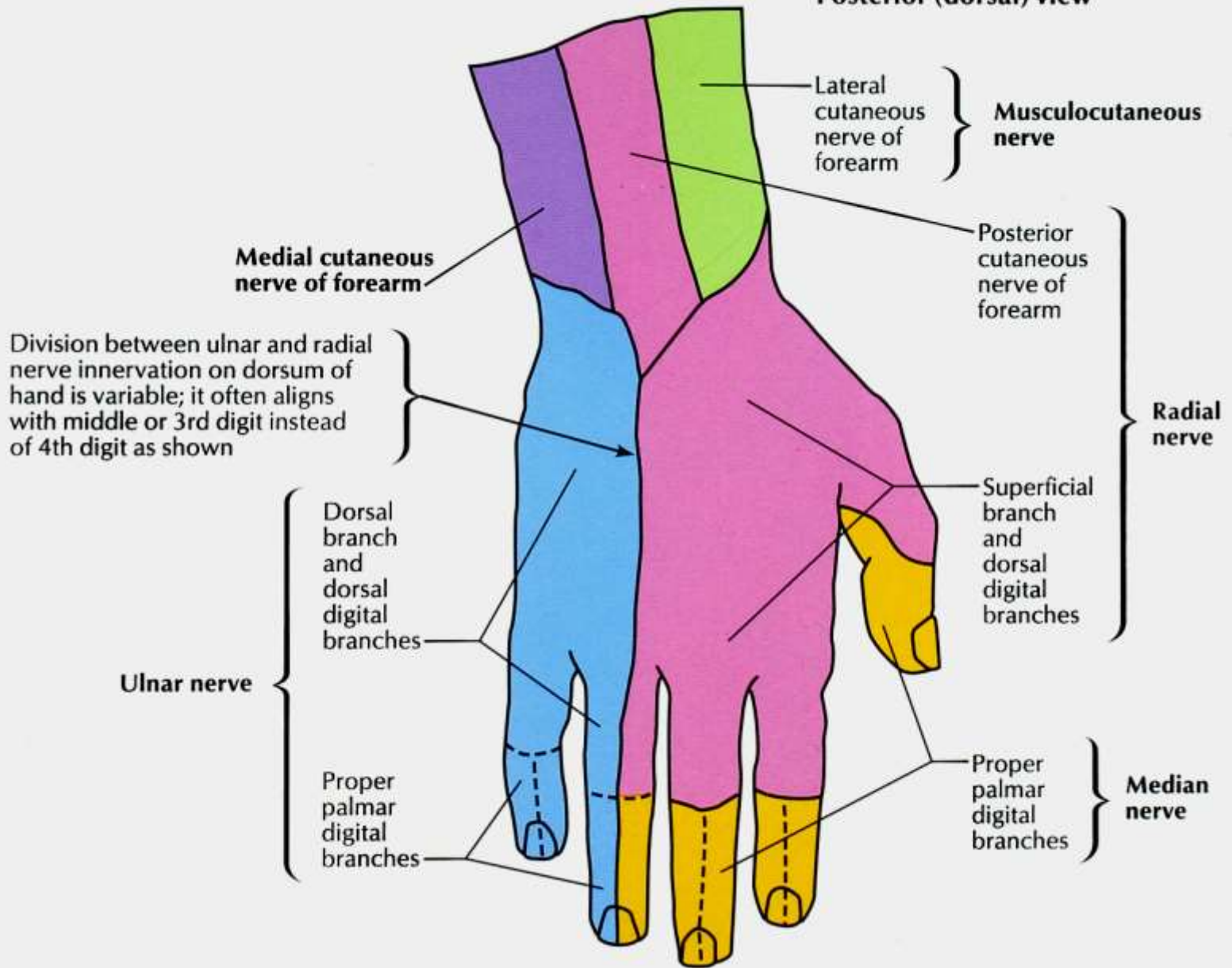
F. Netter  
© H&N



# Anterior (palmar) view



**Posterior (dorsal) view**







Tatry

Foto. J. Urbaniak

*Dziękuję*